



---

## Installation Instructions

**ARK Lowering Springs**  
**GT-F and GT-S**  
(LF0702-0900, LS0702-0900)  
for  
**Hyundai Genesis Coupe (All Models)**

---



## Contents

- Front Springs— 2
- Rear Springs—2
- \*Orange Springs—GT-F
- \*Gold Springs—GT-S

## Tools Required

- Socket Wrench/Wrench:
  - 12 mm
  - 14 mm
  - 17 mm
  - 19 mm
- Socket Wrench Extension
- Lubricant (WD-40)
- Original scissor jack that came with the vehicle or something equivalent to it

## Warning

- Before removing the original springs, be sure to read over the installation instructions and fully understand them.
- If any items in the package are missing please contact your authorized dealer before installation.
- We advise you to have an experienced person or certified mechanic install the lowering springs.
- Loosely fasten all nuts and bolts until everything is installed, then tighten them down to the proper torque specs as you align the suspension parts properly.
- These instructions are specific to the 2010+ Hyundai Genesis Coupe (All Models). However, please be sure to specify the exact year when purchasing lowering springs.

# Removal of OEM Front Springs



1. Properly jack up the vehicle on flat, level ground and support the vehicle on proper jack stands (Figure 1)

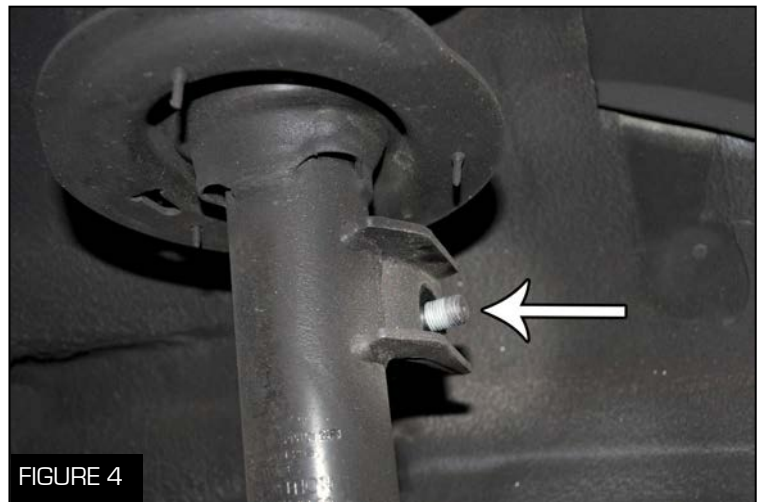
2. Begin with removing the front wheels using the proper socket or key for the lug nuts or wheels locks (Figure 1)



3. Place the OEM scissor jack under the brake rotor to support it before unbolting anything (Figure 2)



4. Unbolt the nut on the center of the strut tower using a 14 mm socket wrench (Figure 3)



5. Unbolt the sway bar end link from the strut using a 19 mm socket wrench (Figure 4)

## Removal of OEM Front Springs

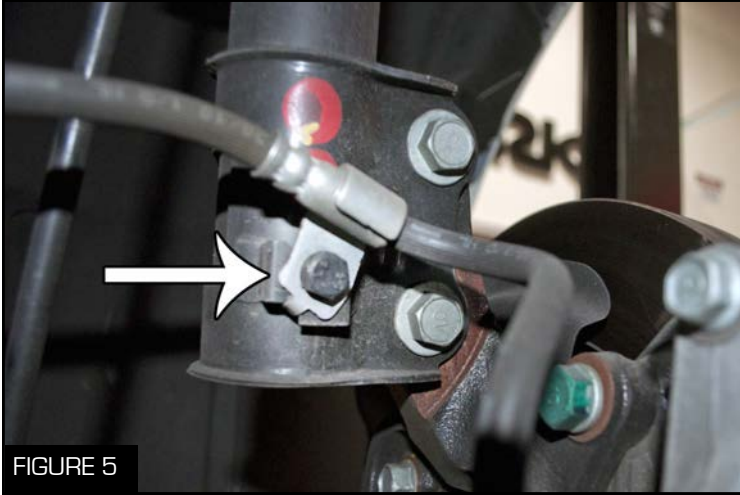


FIGURE 5

6. Unbolt the brake line using a 12 mm socket wrench and move it out of the way (Figure 5)



FIGURE 7

8. Unbolt the top bolt first using a 17 mm socket wrench on the head and a 19 mm socket wrench on the nut, the brake assembly will move at this point (Figure 7)

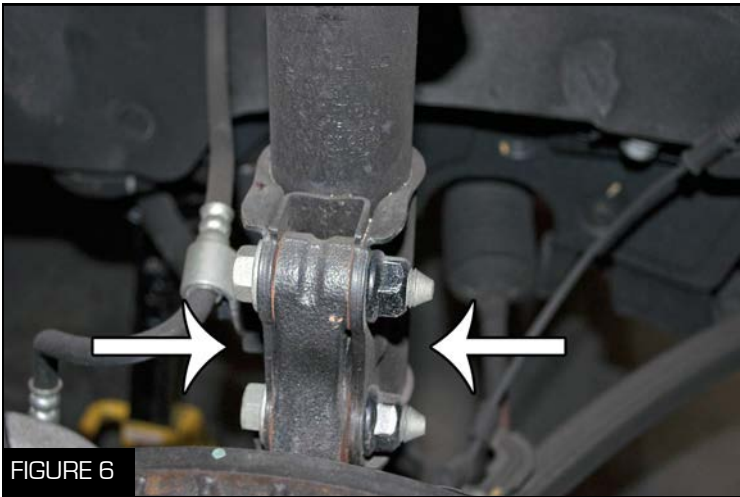


FIGURE 6

7. Spray the two nuts and bolts with a lubricant to make them easier to unbolt (Figure 6)

9. Now unbolt the lower bolt using the same tools and slowly lower the brake assembly further (Figure 7)



FIGURE 8

10. Unbolt the three bolts on the strut using a 14 mm socket wrench and remove the strut/spring from the car (Figure 8)

## Removal of OEM Front Springs



11. With the strut off of the vehicle, remove the top piece and take the OEM spring off (Figure 9)



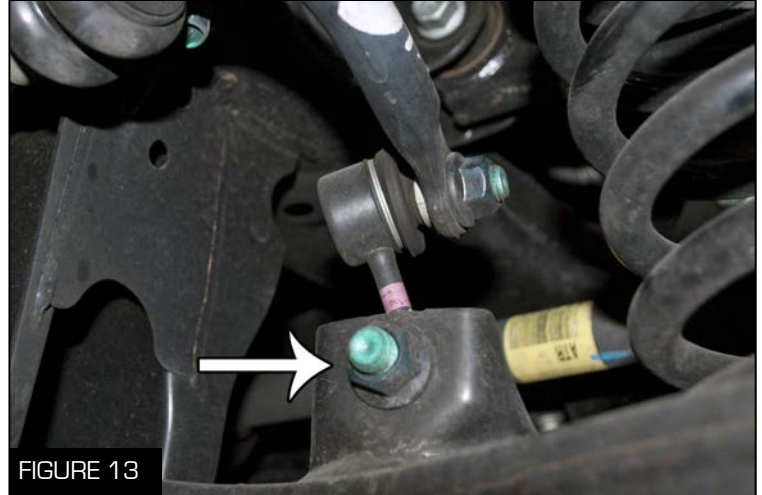
12. Put the new ARK Performance lowering spring into place and loosely bolt on the top piece with the center bolt using a 17 mm socket wrench (Figure 10)

13. Repeat all steps in reverse order to install the struts/springs back into the vehicle.

## Removal of OEM Rear Springs



1. Remove the rear wheels using the proper socket or key for the lug nuts or wheel locks (Figure 11)



3. Unbolt the sway bar using a 17 mm socket wrench and move the link out of the way (Figure 13)



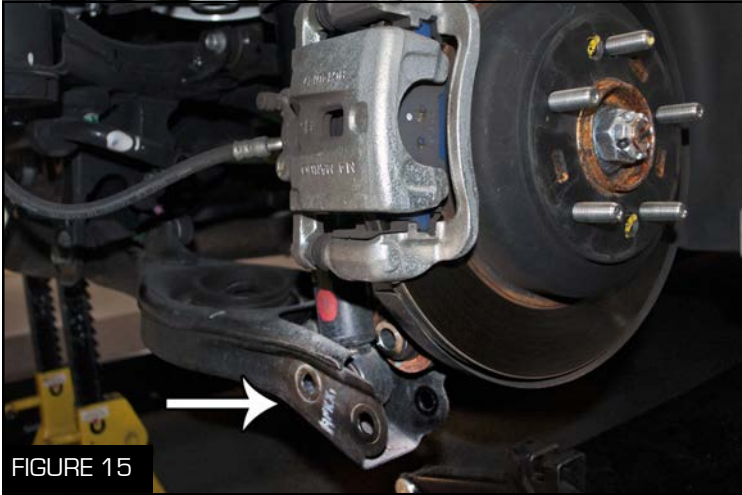
2. Put the scissor jack under the brake assembly to support it (Figure 12)



4. Remove the bolt and nut towards the outside of the vehicle using a 19 mm socket wrench for both nut and bolt (Figure 14)

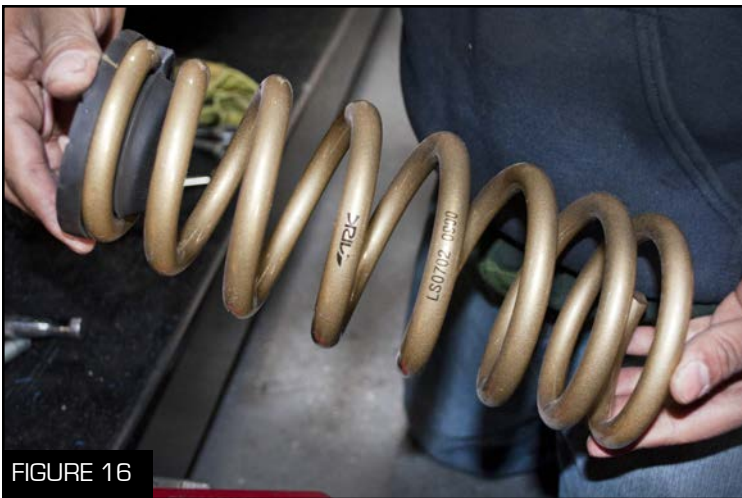
5. Slowly lower the brake assembly until it stops (Figure 14)

## Removal of OEM Rear Springs



6. Remove the second bolt and nut towards the inside of the vehicle using a 19 mm socket wrench for both nut and bolt (Figure 15)

7. Remove the OEM spring from the vehicle (Figure 15)



8. Place the OEM rubber piece on to the ARK Performance lowering springs and put them back in the vehicle (Figure 16)

9. Follow the instructions in reverse to complete the installation.



## First Operation/Maintenance

Be sure to check that the wheel lug nuts are tightened down to the proper torque specifications.

Take the vehicle for a test drive and listen for any odd clunking noises or vibrations. If there are any, go back through the installation instructions and be sure everything is properly tightened.

Be sure to take the vehicle to a professional suspension alignment shop to have your vehicle re-aligned after installing ARK Performance lowering springs.

