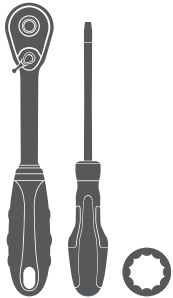


Parts List

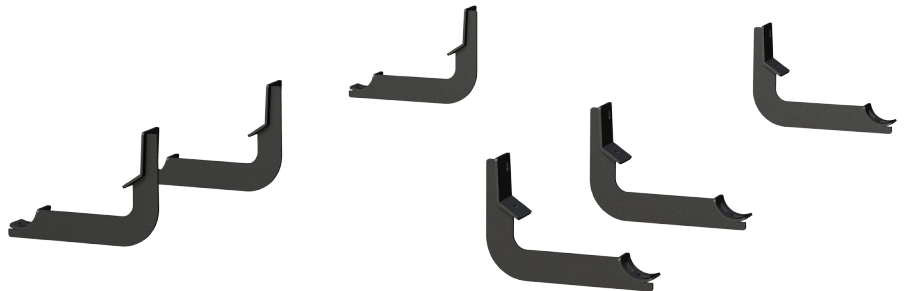
1	Driver / left side bar
1	Passenger / right side bar
3	Driver / left mounting bracket
3	Passenger / right mounting bracket
6	Serrated flange nut, 8mm
12	Hex bolt, 8mm
12	Flat washer, 8mm
12	Lock washer, 8mm
12	Hex bolt, 10mm
12	Lock washer, 10mm
12	Hex nut, 10mm

Tools Required

Ratchet	Socket, 13mm
Flathead screwdriver	

**Level of Difficulty**

Easy

Product Image**Brackets****Notes and Maintenance**

Before you begin installation, read all instructions thoroughly.

Proper tools will improve the quality of installation and reduce the time required.

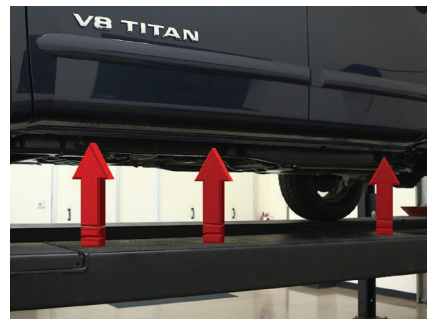
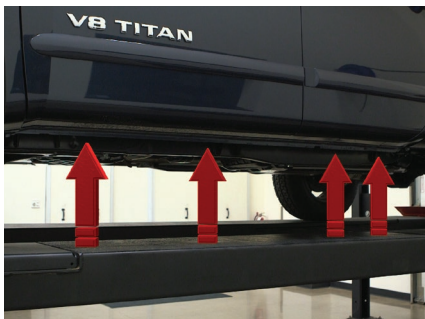
To protect the product, wax after installing. Regular waxing is recommended to add a protective layer over the finish. Do not use any type of polish or wax that may contain abrasives that could damage the finish.

For stainless steel and aluminum, polish may be used to clear small scratches and scuffs on the finish. Mild soap may be used also to clean the product.

Step 1

Locate the four mounting tabs along the bottom edge of the vehicle body.

This installation will use the first, second and fourth mounting tabs.

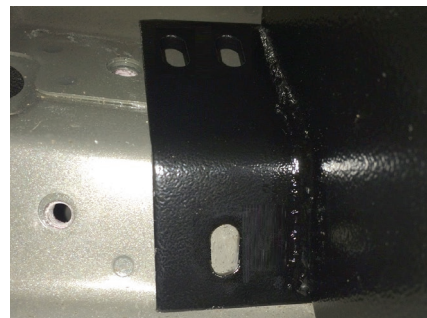


Step 2

Starting at the front driver-side mounting location and using a flathead screwdriver, remove the plastic plugs to expose the threaded inserts on the rocker panel.

Old-style vehicles may have a combination of threaded inserts and threaded studs.

New-style vehicle will have two threaded inserts as shown.

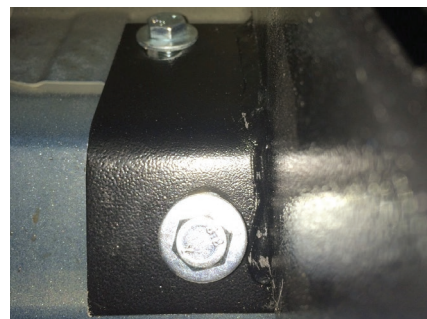


Step 3

Secure the bracket to the vehicle using an 8mm serrated flange nut on the top mounting point and an 8mm hex bolt, lock washer and flat washer on the lower mounting point.

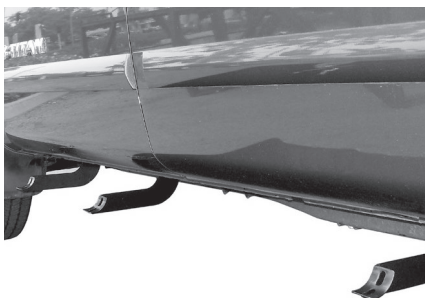
On newer vehicles with two threaded inserts, install the bracket with two 8mm hex bolts, two 8mm lock washers and two 8mm flat washers.

Snug the hardware, but do not fully tighten.



Step 4

Repeat step 2 and 3 to install the middle and rear mounting brackets.



Step 5

Place the side bar onto the mounting brackets and align the mounting holes with the holes in the brackets on the vehicle.

Secure the side bar to the brackets using a 10mm hex bolt, lock washer and flat washer at each mounting location.

Snug the hardware, but do not fully tighten.



Step 6

Adjust and level the side bar.

With the side bar in position, it is recommended to tighten all brackets to the vehicle first, followed by the side bar connections.



Step 7

Repeat steps 1 through 6 on the passenger side of the vehicle.

Congratulations on the installation of your new ARIES 3" round side bars.

With the side bars installed, periodic inspections should be performed to ensure all mounting hardware remains tight.

To protect your investment, see the 'Notes and Maintenance' section on the first page of this instruction manual.

