

### Parts List

1	Driver / left rocker step
1	Passenger / right rocker step
1	Passenger / right mounting bracket, front
1	Passenger / right mounting bracket, top front
12	Clip nut, M8
1	Bolt plate, M8 - 1.25 x 30mm
15	Hex bolt, M8 - 1.25 x 25mm
17	Flat washer, M8
13	Lock washer, M8
3	Nylock nut, M8

### Tools Required

Torque wrench	Socket, 13mm
Flathead screwdriver	Wrench, 13mm

### Torque Specifications

	Torque Specifications	
<b>METRIC</b>	M6 bolt	3 ft.-lbs.
	M8 bolt	7 ft.-lbs.
	M10 bolt	16 ft.-lbs.
	M12 bolt	28 ft.-lbs.
<b>SAE</b>	1/4" bolt	3 ft.-lbs.
	5/16" bolt	7 ft.-lbs.
	3/8" bolt	16 ft.-lbs.
	7/16" bolt	20 ft.-lbs.
	1/2" bolt	28 ft.-lbs.

### Level of Difficulty

Easy

### Product Image



### Notes and Maintenance

Before you begin installation, read all instructions thoroughly.

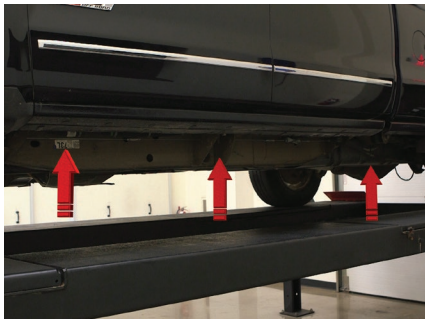
Proper tools will improve the quality of installation and reduce the time required.

For black finishes, mild soap may be used to clean the product.

Refer to the table to the left when securing hardware during the installation process to help prevent damage to the product or vehicle.

## Step 1

Starting on the driver side, locate the three mounting points along the bottom edge of the vehicle



## Step 2

Locate the front mounting tab, slide a clip-nut over the lower mounting point.

**Note:** Depending on the model year the use of an additional clip-nut may be needed for the upper mounting point.

Using a flathead screwdriver, remove the hole plug and insert a clip-nut in through the access hole and slide the clip-nut over the adjacent small hole.



## Step 3

With help, lift the rocker step into position and align the brackets on the rocker step with the mounting points on the vehicle.

Secure all mounting points using two M8 hex bolts, two lock washers and two flat washers.

Tighten all hardware to the recommended torque specifications listed in the table on the first page.



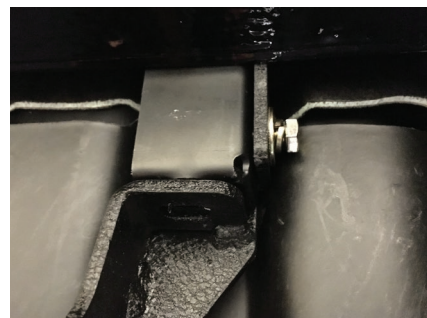
## Step 4

Repeat steps 1 through 3 to install the passenger middle and rear mounting brackets.

To install the front mounting bracket, attach the top mounting bracket to the bracket on the rocker step using an M8 hex bolt, lock washer and flat washer.

Slide the bracket up through the opening between the edge of the rocker panel and the def tank.

**Note:** On 2017 models, the DEF tank shield will need to be removed and trimmed before reinstallation.

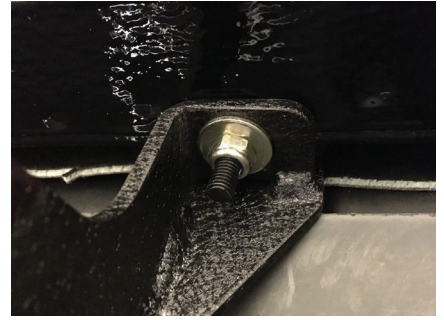
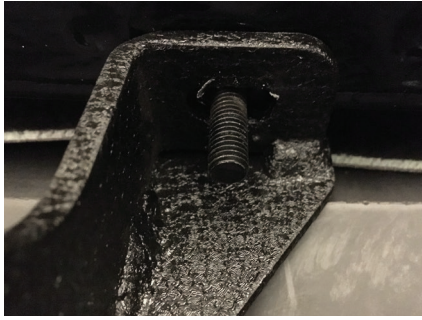


### Step 5

Slide the mounting bracket down the rocker panel and position the bracket over the mounting hole along the edge of the rocker panel.

Slide an M8 bolt plate in through the top of the rocker panel down through the mounting bracket and mounting point.

Secure the mounting bracket using an M8 flat washer and M8 nylock nut.



### Step 6

Attach the passenger front mounting bracket to the rocker step using two M8 hex bolts, four M8 flat washers and two M8 nylock nuts.

With the rocker steps installed, tighten all hardware to the recommended torque specifications listed in the table on the first page.

For 2017 Diesel models only: Trim DEF tank shield as needed and reinstall.



### Step 7

Congratulations on the installation of your new ARIES rocker steps.

With the rocker steps installed, periodic inspections should be performed to ensure all mounting hardware remains tight.

To protect your investment, see the 'Notes and Maintenance' section on the first page of this instruction manual.

