

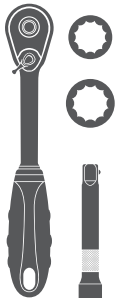
### Parts List

1	Driver / left, <a href="#">side bar</a> / running board
1	Passenger / right, <a href="#">side bar</a> / running board
2	Mounting bracket, front
2	Mounting bracket, middle
2	Mounting bracket, rear
24	Hex bolt, 8mm x 1.25mm
24	Flat washer, 8mm
24	Lock washer, 8mm
24	Hex nut, 8mm x 1.25mm

RidgeStep™ board installation does not require the 8mm x 1.25mm hex nuts

### Tools Required

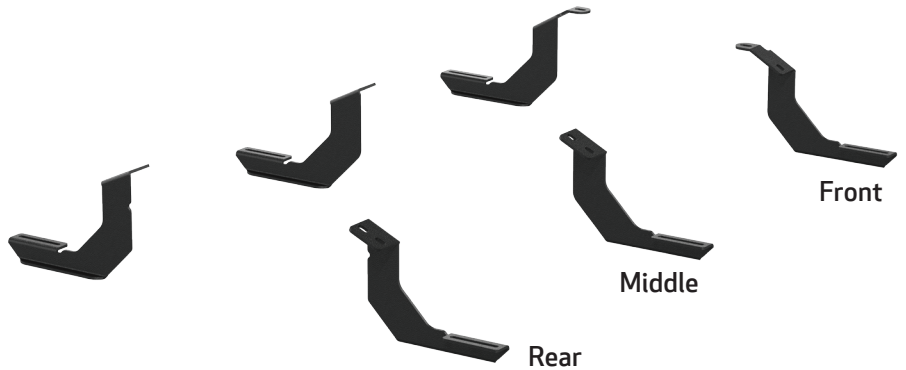
Ratchet	Extension
Socket, 13mm	Socket, 14mm



### Level of Difficulty

Easy

### Product Image



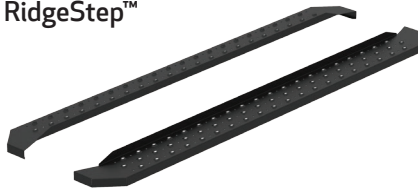
### AdvantEDGE™



### AdvantEDGE™



### RidgeStep™



### Notes and Maintenance

Before you begin installation, read all instructions thoroughly.

Proper tools will improve the quality of installation and reduce the time required.

To protect the product, wax after installing. Regular waxing is recommended to add a protective layer over the finish. Do not use any type of polish or wax that may contain abrasives that could damage the finish.

For chrome powder coat, polish may be used to clear small scratches and scuffs on the finish. Mild soap may be used also to clean the product.

For black finishes, mild soap may be used to clean the product.

### Step 1

Locate the factory-threaded holes along the bottom inside edge of the vehicle body.

This installation will use the first, second and fifth mounting tabs.



### Step 2

Each bracket has a specific mounting location. The front bracket is bent at the mounting point. The middle bracket has a rectangular head. The rear bracket has a half-moon cut out.

Be sure to check each bracket before mounting to the vehicle.



### Step 3

Starting at the front driver-side mounting location, locate the threaded holes on the inside of the body panel.

Attached the front bracket to the vehicle using two 8mm hex bolts, lock washers and flat washers.

Snug the hardware, but do not fully tighten.



### Step 4

Repeat step 3 to install the middle and rear brackets over the mounting hole locations from step 1.

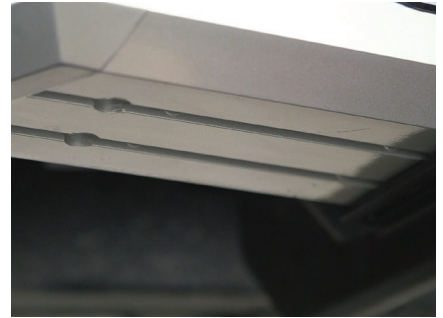


## If installing RidgeStep™ running boards, skip to Step 6A

### Step 5A - AdvantEDGE™ Side Bars

Carefully place the side bar onto the mounting brackets.

Ensure the outer edge of the side bar is lined up with the outer edge of the mounting brackets.

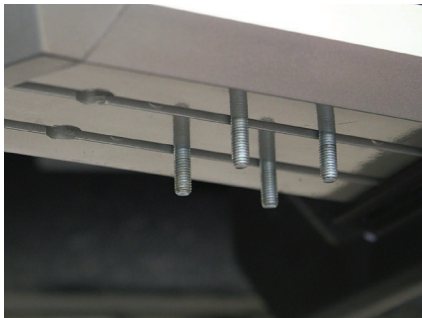


### Step 5B - AdvantEDGE™ Side Bars

Locate the round slots on the base of the side bar.

Insert two 8mm hex bolts into each slot, sliding them towards the front mounting bracket.

Insert an additional 8mm hex bolt into each rail slot by the back tire opening.



### Step 5C - AdvantEDGE™ Side Bars

Slide the bolts down the rail so that two bolts are positioned for each bracket.

Carefully lift the side bar up and move the bolts as necessary so they are in line with the slots on the mounting brackets.

Secure the side bar to the brackets using flat washers, lock washers and 8mm hex nuts. Snug the hardware, but do not fully tighten.



### Step 6A - RidgeStep™ Running Boards

Slide the three C-shaped track mounting brackets into the rail slots.





### Step 6B - RidgeStep™ Running Boards

Carefully place the running board onto the mounting brackets.

Align the C-shaped track mounting brackets with the mounting brackets on the vehicle.



### Step 6C - RidgeStep™ Running Boards

Attach the C-shaped track mounting brackets to the mounting brackets using 8mm hex bolts, lock washers and flat washers.



### Step 7

At this time, adjust the side bars / running boards to the desired location.

With the side bars / running boards in position, it is recommended to tighten all brackets to the vehicle first, followed by the side bar / running board connections.



### Step 8

Repeat steps 1 through 7 on the passenger side of the vehicle.

Congratulations on the installation of your brand new ARIES AdvantEDGE™ side bars / RidgeStep™ running boards.

With the side bars / running boards installed, periodic inspections should be performed to ensure all mounting hardware remains tight.

To protect your investment, see the 'Notes and Maintenance' section on the first page of this instruction manual.

