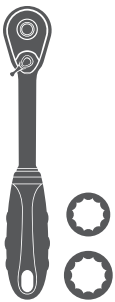


Parts List

1	Driver / left side bar / running board
1	Passenger / right side bar / running board
4	Mounting bracket, universal
8	Hex bolt, 8mm
8	Flat washer, 8mm
8	Lock washer, 8mm
8	Hex nut, 8mm
8	Clip nut 10mm
16	Hex bolt, 10mm
24	Flat washer, 10mm
16	Lock washer, 10mm
8	Hex nut, 10mm

Tools Required

Ratchet	Socket, 16mm
Socket, 13mm	



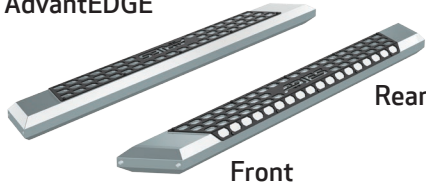
Level of Difficulty

Easy

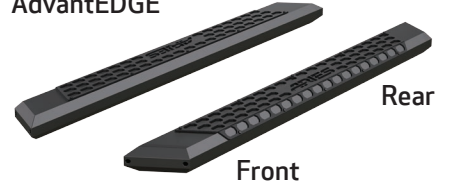
Product Image



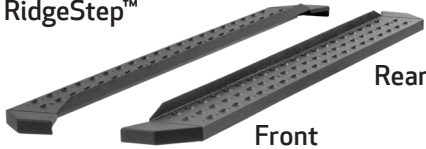
AdvantEDGE™



AdvantEDGE™



RidgeStep™



Notes and Maintenance

Before you begin installation, read all instructions thoroughly.

Proper tools will improve the quality of installation and reduce the time required.

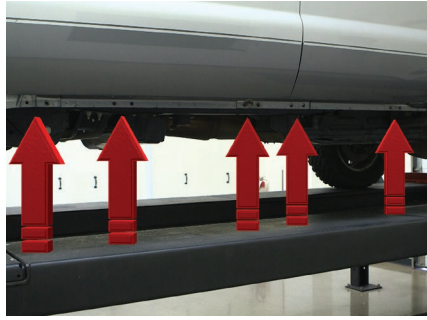
For chrome powder coat, polish may be used to clear small scratches and scuffs on the finish. Mild soap may be used also to clean the product.

For black finishes, mild soap may be used to clean the product.

Step 1

Locate the five mounting tabs along the bottom edge of the vehicle.

This installation will use the first and fifth mounting tabs.



Step 2

Starting at the front driver-side mounting location, insert a 10mm clip nut into the square hole and align it over the adjacent round hole.

Place a bracket onto the vehicle and secure with a 10mm hex bolt, 10mm lock washer and 10mm flat washer.

Snug the hardware, but do not fully tighten.



Step 3

Finish securing the front mounting bracket to the vehicle using a 10mm hex bolt and 10mm flat washer from the outside of the bracket and a 10mm hex nut, 10mm lock washer and 10mm flat washer on the inside.

Repeat this step for the remaining bottom bolt location.



Step 4

Repeat steps 2 and 3 to install the rear bracket over the mounting tab location from step 1.



If installing RidgeStep™ running boards, skip to Step 6A

Step 5A - AdvantEDGE™ Side Bars

Carefully place the side bar onto the mounting brackets.

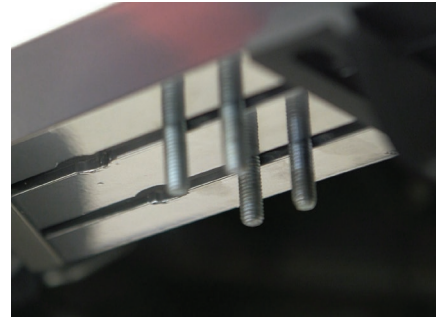
Ensure the outer edge of the side bar is lined up with the outer edge of the mounting brackets.



Step 5B - AdvantEDGE™ Side Bars

Locate the round slots on the base of the side bar.

Insert two 8mm hex bolts into each slot, sliding them towards the front mounting bracket.

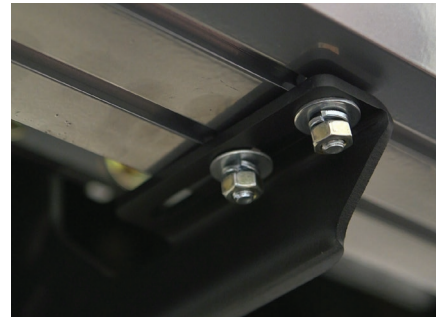
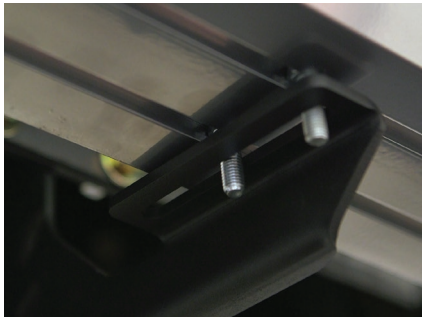


Step 5C - AdvantEDGE™ Side Bars

Slide the bolts down the rail so that two bolts are positioned for each bracket.

Carefully lift the side bar up and move the bolts as necessary so they are in line with the slots on the mounting brackets.

Secure the side bar to the brackets using flat washers, lock washers and 8mm hex nuts. Snug the hardware, but do not fully tighten. Continue to step 7.



Step 6A - RidgeStep™ Running Boards

Slide the two C-shaped track mounting brackets into the rail slots.

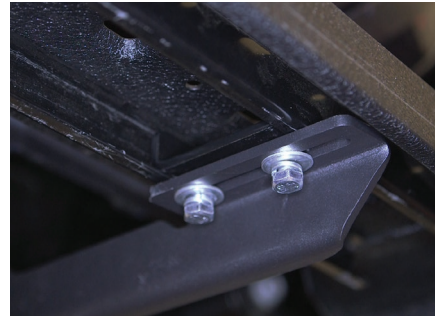


Step 6B - RidgeStep™ Running Boards

Carefully place the running board onto the mounting brackets.

Align the C-shaped track mounting brackets with the mounting brackets on the vehicle.

Attach the C-shaped track mounting brackets to the mounting brackets using 8mm hex bolts, lock washers and flat washers.



Step 7

At this time, adjust the side bars / running boards to the desired location.

With the side bars / running boards in position, it is recommended that all brackets first be tightened to the vehicle, followed by the side bar / running board connections.



Step 8

Repeat steps 1 through 7 on the passenger side of the vehicle.

Congratulations on the installation of your brand new ARIES AdvantEDGE™ side bars / RidgeStep™ running boards.

With the side bars / running boards installed, periodic inspections should be performed to ensure all mounting hardware remains tight.

To protect your investment, see the 'Notes and Maintenance' section on the first page of this instruction manual.

