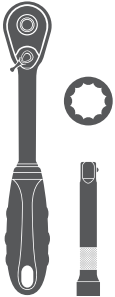


Parts List

1	Driver / left, side bar / running board
1	Passenger / right, side bar / running board
6	Mounting bracket
12	Hex bolt, 8mm
30	Flat washer, 8mm
18	Nylon flat washer, 8mm
12	Lock washer, 8mm
12	Hex nut, 8mm
18	Lock nut, 8mm

Tools Required

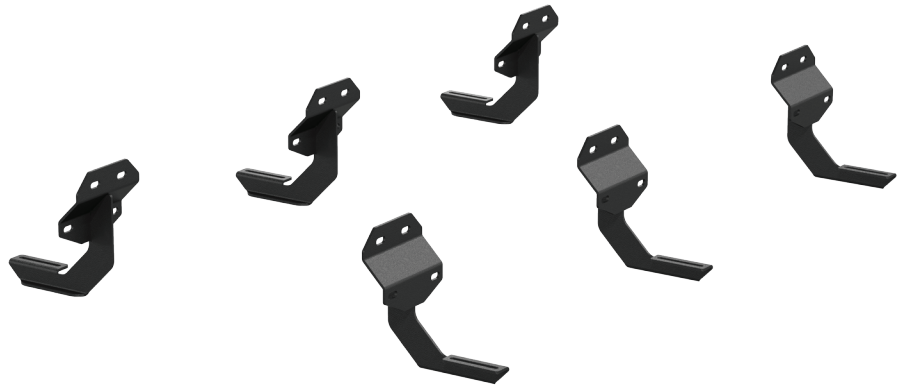
Ratchet	Socket, 13mm
Extension	



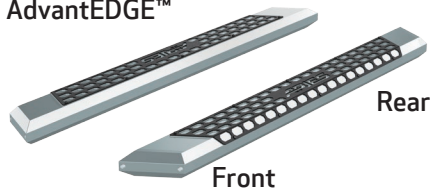
Level of Difficulty

Easy

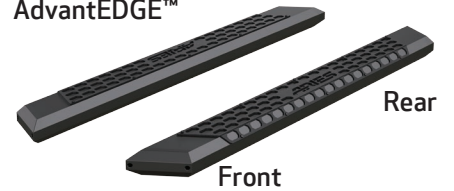
Product Image



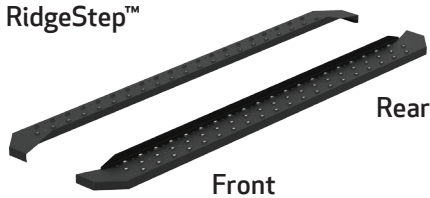
AdvantEDGE™



AdvantEDGE™



RidgeStep™



Notes and Maintenance

Before you begin installation, read all instructions thoroughly.

Proper tools will improve the quality of installation and reduce the time required.

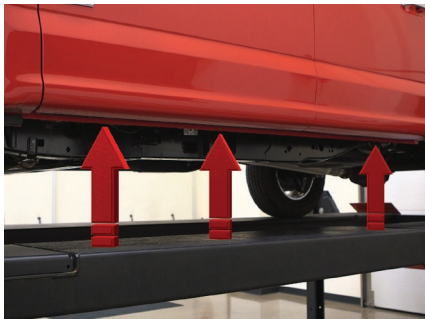
To protect the product, wax after installing. Regular waxing is recommended to add a protective layer over the finish. Do not use any type of polish or wax that may contain abrasives that could damage the finish.

For chrome powder coat, polish may be used to clear small scratches and scuffs on the finish. Mild soap may be used also to clean the product.

For black finishes, mild soap may be used to clean the product.

Step 1

Locate the three mounting tabs along the bottom edge of the vehicle body.



Step 2

Starting at the front driver-side mounting location, locate the three threaded bolts on the inside of the body panel.

Before attaching the bracket place a nylon flat washer on each of the threaded bolts to prevent any galvanic corrosion.

Attach the bracket to the body panel using an 8mm flat washer and lock nut.

Snug the hardware, but do not fully tighten.



Step 3

Repeat step 2 to install the second and third brackets over the mounting tab locations from step 1.



If installing RidgeStep™ running boards, skip to Step 5A

Step 4A - AdvantEDGE™ Side Bars

Carefully place the side bar onto the mounting brackets.

Ensure the outer edge of the side bar is lined up with the outer edge of the mounting brackets.

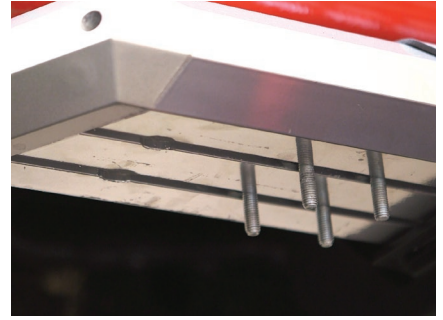
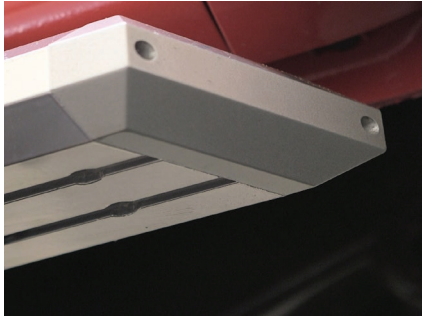


Step 4B - AdvantEDGE™ Side Bars

Locate the round slots on the base of the side bar.

Insert two 8mm hex bolts into each slot, sliding them towards the front mounting bracket.

Insert an additional 8mm hex bolt into each rail slot by the back tire opening.

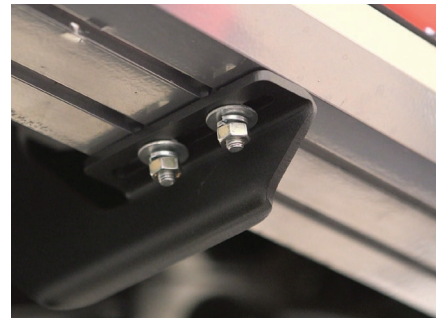


Step 4C - AdvantEDGE™ Side Bars

Slide the bolts down the rail so that two bolts are positioned for each bracket.

Carefully lift the side bar up and move the bolts as necessary so they are in line with the slots on the mounting brackets.

Secure the side bar to the brackets using flat washers, lock washers and 8mm hex nuts. Snug the hardware, but do not fully tighten.



Step 5A - RidgeStep™ Running Boards

Slide the three C-shaped track mounting brackets into the rail slots.



Step 5B - RidgeStep™ Running Boards

Carefully place the running board onto the mounting brackets.

Align the C-shaped track mounting brackets with the mounting brackets on the vehicle.



Step 5C - RidgeStep™ Running Boards

Attach the C-shaped track mounting brackets to the mounting brackets using 8mm hex bolts, lock washers and flat washers.



Step 6

At this time, adjust the side bars / running boards to the desired location.

With the side bars / running boards in position, it is recommended to tighten all brackets to the vehicle first, followed by the side bar / running board connections.



Step 7

Repeat steps 1 through 6 on the passenger side of the vehicle.

Congratulations on the installation of your brand new ARIES AdvantEDGE™ side bars / RidgeStep™ running boards.

With the side bars / running boards installed, periodic inspections should be performed to ensure all mounting hardware remains tight.

To protect your investment, see the 'Notes and Maintenance' section on the first page of this instruction manual.

