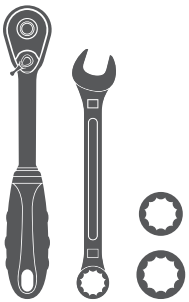


Parts List

1	Driver / left side bar / running board
1	Passenger / right side bar / running board
4	Mounting bracket, universal
8	Clip nut 8mm
24	Hex bolt, 8mm
24	Flat washer, 8mm
24	Lock washer, 8mm
16	Hex nut, 8mm

Tools Required

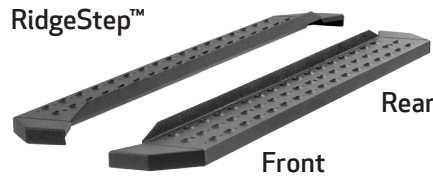
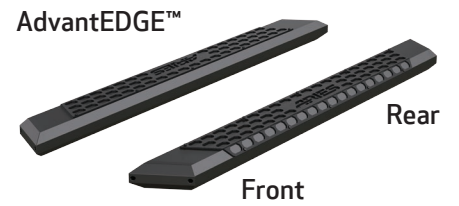
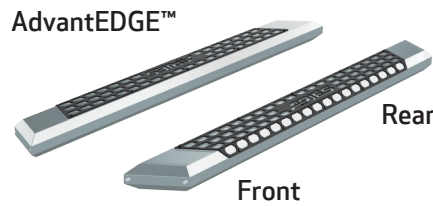
Ratchet	Wrench, 17mm
Socket, 13mm	Socket, 16mm



Level of Difficulty

Easy

Product Image



Notes and Maintenance

Before you begin installation, read all instructions thoroughly.

Proper tools will improve the quality of installation and reduce the time required.

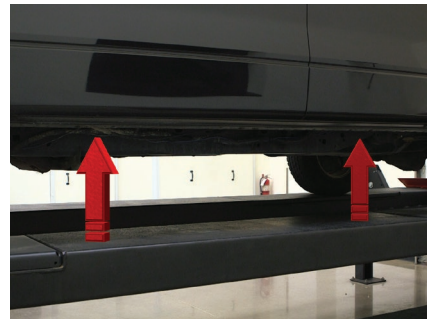
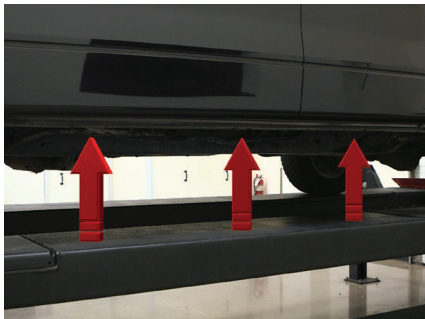
For chrome powder coat, polish may be used to clear small scratches and scuffs on the finish. Mild soap may be used also to clean the product.

For black finishes, mild soap may be used to clean the product.

Step 1

Locate the three mounting tabs along the bottom edge of the vehicle.

This installation will use the first and third mounting tabs.



Step 2

Starting at the front driver-side mounting location, insert two 8mm clip nuts into the rectangular hole and align them over the adjacent round holes.

Place a bracket onto the vehicle and secure the top portion with two 8mm hex bolts, lock washers and flat washers.

Snug the hardware, but do not fully tighten.



Step 3

Finish securing the front mounting bracket to the vehicle by inserting two 8mm hex bolts and flat washers from the bottom side of the bracket and secure with two 8mm lock washers, flat washers and hex nuts on the top side.



Step 4

Repeat steps 2 and 3 to install the rear bracket over the second mounting tab location from step 1.

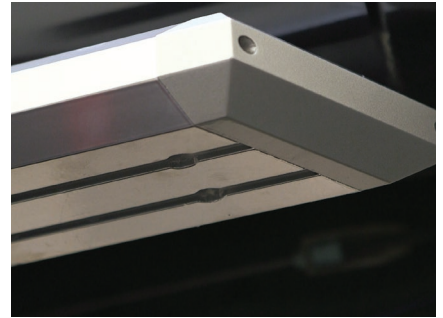


If installing RidgeStep™ running boards, skip to Step 6A

Step 5A - AdvantEDGE™ Side Bars

Carefully place the side bar onto the mounting brackets.

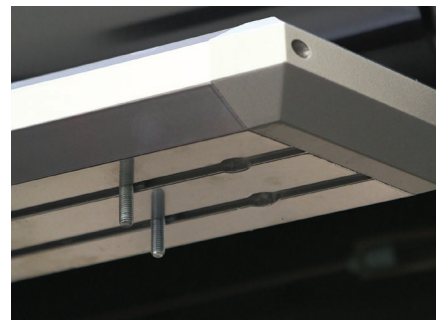
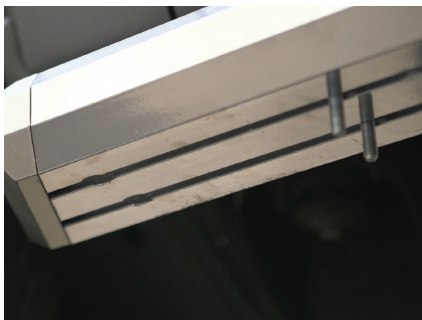
Ensure the outer edge of the side bar is lined up with the outer edge of the mounting brackets.



Step 5B - AdvantEDGE™ Side Bars

Locate the round slots on the base of the side bar.

Insert two 8mm hex bolts into each slot, sliding them towards the front mounting bracket.



Step 5C - AdvantEDGE™ Side Bars

Slide the bolts down the rail so that two bolts are positioned for each bracket.

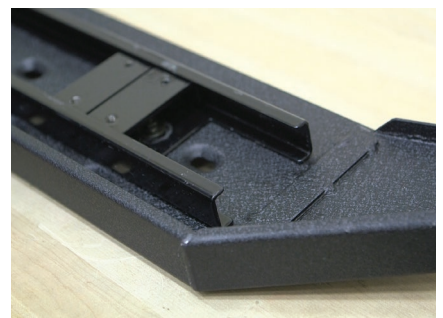
Carefully lift the side bar up and move the bolts as necessary so they are in line with the slots on the mounting brackets.

Secure the side bar to the brackets using flat washers, lock washers and 8mm hex nuts. Snug the hardware, but do not fully tighten. Continue to step 7.



Step 6A - RidgeStep™ Running Boards

Slide the two C-shaped track mounting brackets into the rail slots.



Step 6B - RidgeStep™ Running Boards

Carefully place the running board onto the mounting brackets.

Align the C-shaped track mounting brackets with the mounting brackets on the vehicle.



Step 6C - RidgeStep™ Running Boards

Attach the C-shaped track mounting brackets to the mounting brackets using 8mm hex bolts, lock washers and flat washers.



Step 7

At this time, adjust the side bars / running boards to the desired location.

With the side bars / running boards in position, it is recommended that all brackets first be tightened to the vehicle, followed by the side bar / running board connections.

Note: Torque all fasteners to 15-20 ft-lb.



Step 8

Repeat steps 1 through 7 on the passenger side of the vehicle.

Congratulations on the installation of your brand new ARIES AdvantEDGE™ side bars / RidgeStep™ running boards.

With the side bars / running boards installed, periodic inspections should be performed to ensure all mounting hardware remains tight.

To protect your investment, see the 'Notes and Maintenance' section on the first page of this instruction manual.

