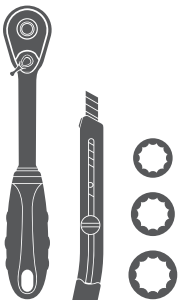


Parts List

1	Driver / left side bar / running board
1	Passenger / right side bar / running board
2	Mounting bracket, front
2	Mounting bracket, rear
16	Hex bolt, 8mm
16	Flat washer, 8mm
16	Lock washer, 8mm
8	Hex nut, 8mm
4	Hex bolt, 10mm
4	Flat washer, 10mm
4	Lock washer, 10mm
4	Flat washer, 12mm
4	Lock washer, 12mm
4	Hex nut, 12mm
4	T-bolt, 12mm tab
4	Bolt retainer, plastic

Tools Required

Ratchet	Socket, 14mm
Socket, 13mm	Socket, 17mm
Utility knife	



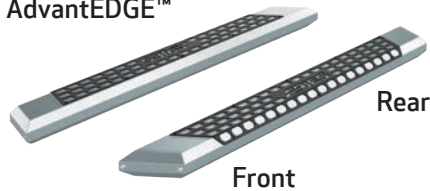
Level of Difficulty

Easy

Product Image



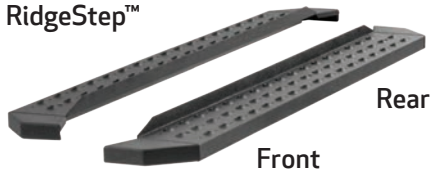
AdvantEDGE™



AdvantEDGE™



RidgeStep™



Notes and Maintenance

Before you begin installation, read all instructions thoroughly.

Proper tools will improve the quality of installation and reduce the time required.

For chrome powder coat, polish may be used to clear small scratches and scuffs on the finish. Mild soap may be used also to clean the product.

For black finishes, mild soap may be used to clean the product.

Step 1

Starting on the driver side, locate the two mounting tabs along the bottom edge of the vehicle.

Locate the front mounting point.



Step 2

Using a utility knife, cut and remove the tape plug covering the third mounting point for the front mounting bracket.



Step 3

Insert a 12mm T-bolt plate into the opening. Slide a plastic bolt retainer over the thread of the bolt to hold the bolt in place.

Place the front driver-side bracket onto the vehicle and secure the top portion with a 12mm lock washer, flat washer and hex nut.

Snug the hardware, but do not fully tighten.



Step 4

Finish securing the front mounting bracket to the vehicle by inserting two 8mm hex bolts, lock washers, flat washers into the bottom holes of the mounting bracket.

Note: On vehicles not equipped with 8mm threaded inserts, align the 10mm nut on the 12mm T-bolt plate with either hole location on the bracket. Secure using a 10mm hex bolt, lock washer and flat washer.

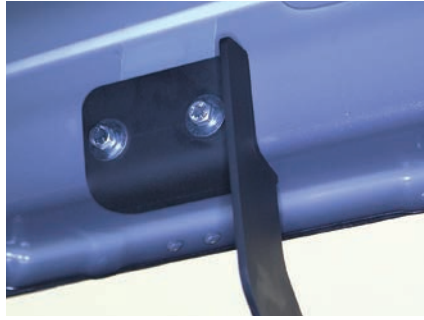


Step 5

Locate the rear mounting bracket and mounting location.

Place the rear bracket onto the vehicle and secure with two 8mm hex bolts, lock washers and flat washers.

Snug the hardware, but do not fully tighten.



If installing RidgeStep™ running boards, skip to Step 7A

Step 6A - AdvantEDGE™ Side Bars

Carefully place the side bar onto the mounting brackets.

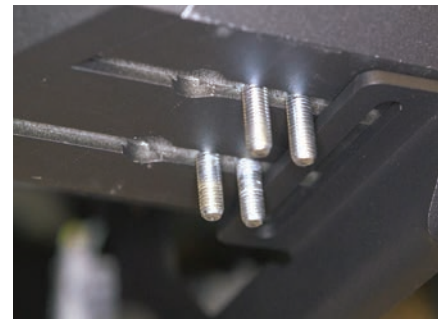
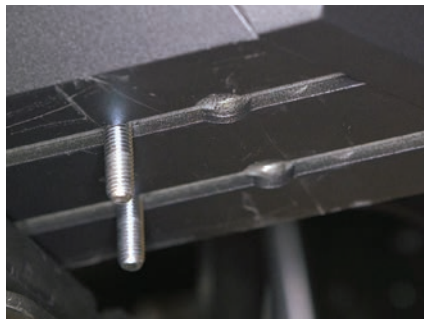
Ensure the outer edge of the side bar is lined up with the outer edge of the mounting brackets.



Step 6B - AdvantEDGE™ Side Bars

Locate the round slots on the base of the side bar.

Insert two 8mm hex bolts into each slot, sliding them towards the front mounting bracket.



Step 6C - AdvantEDGE™ Side Bars

Slide the bolts down the rail so that two bolts are positioned for each bracket.

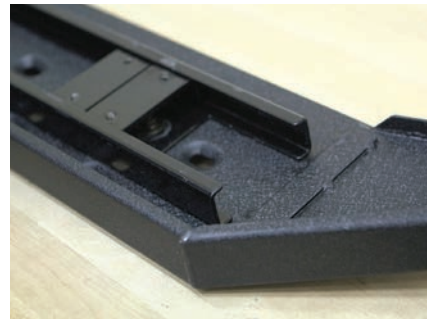
Carefully lift the side bar up and move the bolts as necessary so they are in line with the slots on the mounting brackets.

Secure the side bar to the brackets using flat washers, lock washers and 8mm hex nuts. Snug the hardware, but do not fully tighten. Continue to step 8.



Step 7A - RidgeStep™ Running Boards

Slide the two C-shaped track mounting brackets into the rail slots.

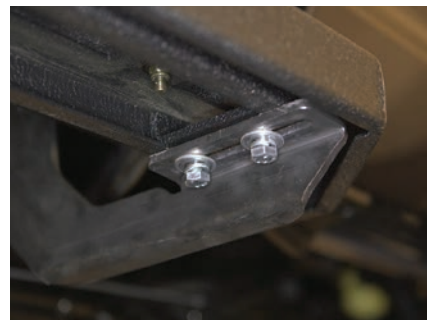
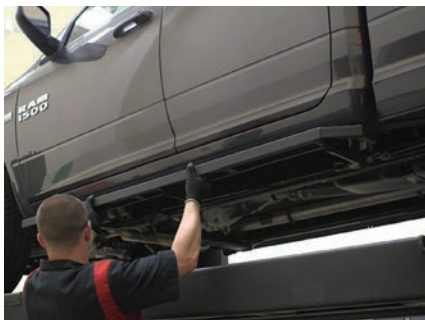


Step 7B - RidgeStep™ Running Boards

Carefully place the running board onto the mounting brackets.

Align the C-shaped track mounting brackets with the mounting brackets on the vehicle.

Attach the C-shaped track mounting brackets to the mounting brackets using 8mm hex bolts, lock washers and flat washers.



Step 9

At this time, adjust the side bars / running boards to the desired location.

With the side bars / running boards in position, it is recommended that all brackets first be tightened to the vehicle, followed by the side bar / running board connections.



Step 9

Repeat steps 1 through 8 on the passenger side of the vehicle.

Congratulations on the installation of your brand new ARIES AdvantEDGE™ side bars / RidgeStep™ running boards.

With the side bars / running boards installed, periodic inspections should be performed to ensure all mounting hardware remains tight.

To protect your investment, see the 'Notes and Maintenance' section on the first page of this instruction manual.

