

Parts List

1	Driver / left, side bar / running board
1	Passenger / right, side bar / running board
6	VersaTrac™ mounting bracket, universal
2	VersaTrac™ mounting bracket, DEF tank
14	Clip nut, M8*
31	Hex bolt, M8 - 1.25 x 25mm (B)
31	Lock washer, M8 (B)
31	Flat washer, M8 (B)
16	Hex nut, M8 (B)

(B) = Black hardware

* Depending on the year of the vehicle, clip nuts may or may not be needed.

Tools Required

Ratchet	Socket, 13mm
Torque wrench	Extension
Level	

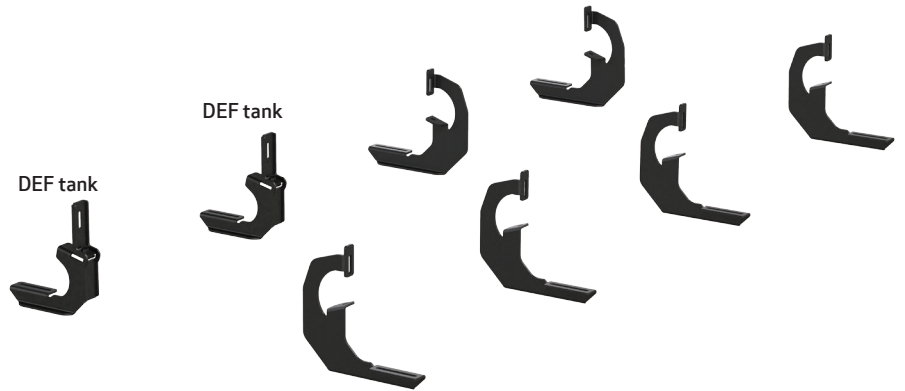
Level of Difficulty

Easy

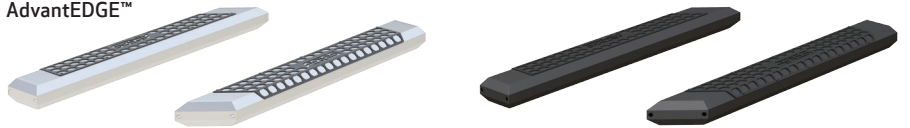


Scan for helpful install tips

Product Image



AdvantEDGE™



RidgeStep™



Torque Specifications		
METRIC	M6 bolt	3 ft.-lbs.
	M8 bolt	7 ft.-lbs.
	M10 bolt	16 ft.-lbs.
	M12 bolt	28 ft.-lbs.
SAE	1/4" bolt	3 ft.-lbs.
	5/16" bolt	7 ft.-lbs.
	3/8" bolt	16 ft.-lbs.
	7/16" bolt	20 ft.-lbs.
	1/2" bolt	28 ft.-lbs.

Notes and Maintenance

Before you begin installation, read all instructions thoroughly.

Proper tools will improve the quality of installation and reduce the time required.

For chrome powder coat, polish may be used to clear small scratches and scuffs on the finish. Mild soap may be used also to clean the product.

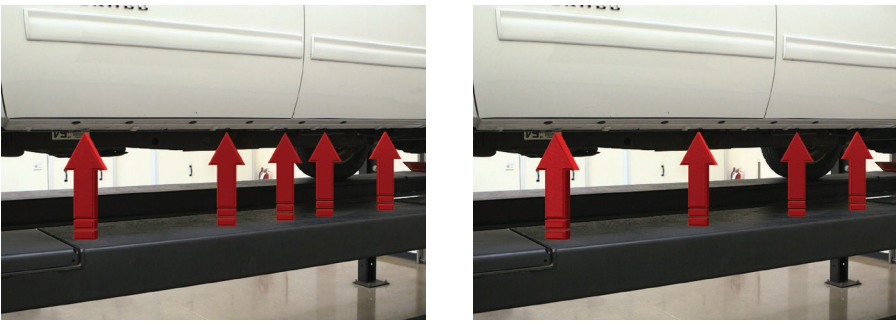
For black finishes, mild soap may be used to clean the product.

Refer to the table to the left when securing hardware during the installation process to help prevent damage to the product or vehicle.

Step 1

Starting on the driver side, locate the five mounting tabs along the bottom edge of the vehicle body.

This installation will use the first, second, fourth and fifth mounting tabs.

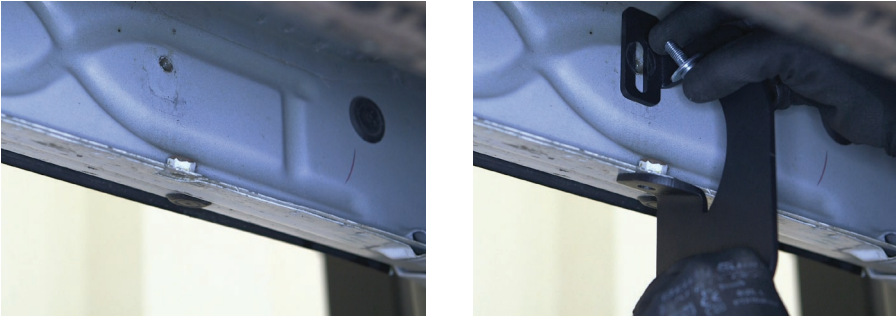


Step 2

Starting at the front driver-side mounting location, locate the threaded hole on the inside of the body panel.

Attach the bracket to the body panel using an M8 hex bolt, lock washer and flat washer.

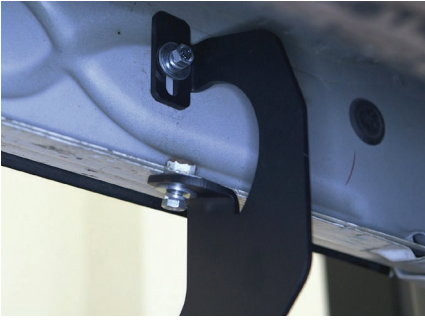
Snug the hardware, but do not fully tighten.



Step 3

Secure the bracket with a second M8 hex bolt, lock washer and flat washer, using the factory-threaded nut on the edge of the body panel.

Snug the hardware, but do not fully tighten.



Step 4

Repeat steps 2 and 3 to install the second bracket over the second mounting tab location from step 1.



Step 5

Locate the fourth and fifth tab locations from step 1.

Insert a clip nut through the access hole and align it over the adjacent smaller hole. Insert a second clip nut over the lower mounting tab.

Secure the bracket to the vehicle with an M8 hex bolt, lock washer and flat washer in each mounting location.

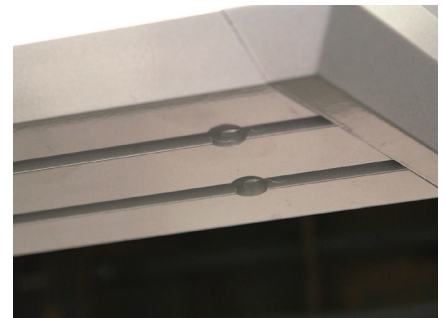


If installing RidgeStep™ running boards, skip to Step 7A

Step 6A - AdvantEDGE™ Side Bars

Carefully place the side bar onto the mounting brackets.

Ensure the outer edge of the side bar is lined up with the outer edge of the mounting brackets.



Step 6B - AdvantEDGE™ Side Bars

Locate the round slots on the base of the side bar.

Insert four M8 hex bolts into each slot.



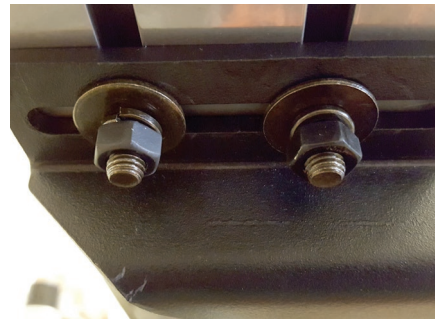
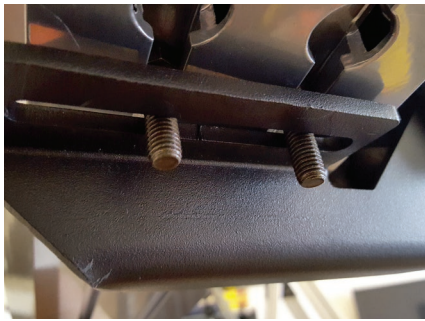
Step 6C - AdvantEDGE™ Side Bars

Slide the bolts down the rail so that two bolts are positioned for each bracket.

Carefully lift the side bar up and move the bolts as necessary so they are in line with the slots on the mounting brackets.

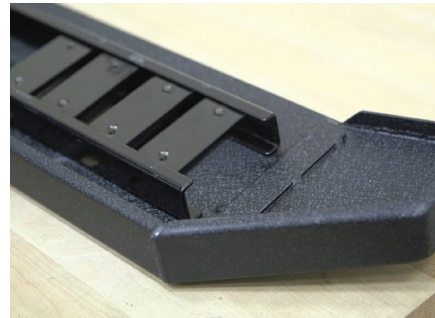
Secure the side bar to the brackets using flat washers, lock washers and M8 hex nuts.

Snug the hardware, but do not fully tighten. Continue to step 8.



Step 7A - RidgeStep™ Running Boards

Slide the four C-shaped track mounting brackets into the rail slots.



Step 7B - RidgeStep™ Running Boards

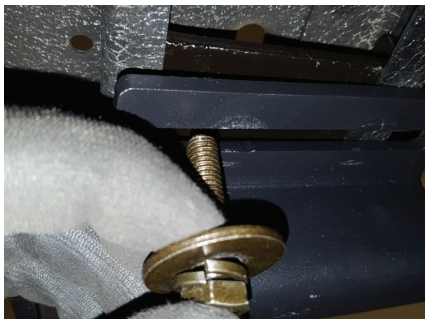
Carefully place the running board onto the mounting brackets.

Align the C-shaped track mounting brackets with the mounting brackets on the vehicle.



Step 7C - RidgeStep™ Running Boards

Attach the C-shaped track mounting brackets to the mounting brackets using M8 hex bolts, lock washers and flat washers.



Step 8

At this time, adjust the side bar / running board to the desired location.

With the side bar / running board in position, it is recommended to tighten all brackets to the vehicle first, followed by the side bar / running board connections.

For recommended torque specifications, refer to the table on page two.



Step 9

To install the first DEF tank mounting bracket, locate the front mounting point on the passenger side of the vehicle.

Insert the DEF tank mounting bracket into the opening to the right of the mounting point.

To install the second DEF tank mounting bracket, locate the second mounting point on the passenger side of the vehicle.

Insert the DEF tank mounting bracket into the opening to the left of the mounting point. Slide the brackets down the rocker panel and align the mounting point on the rocker panel with the mounting point on the brackets.

Secure the mounting brackets to the vehicle using an M8 hex bolt, flat washer and lock washer.

Note: If available on the second bracket, use an M8 bolt, flat washer and lock washer in the threaded hole in the rocker panel and in the slot in the DEF tank bracket for an additional mounting point.



Step 10

Repeat step 5 on the passenger side of the vehicle to install the two rear mounting brackets.

Repeat steps 6A through 8 on the passenger side of the vehicle to install the side bars / running boards.

Congratulations on the installation of your new ARIES AdvantEDGE™ side bars / RidgeStep™ running boards.

With the side bars / running boards installed, periodic inspections should be performed to ensure all mounting hardware remains tight.

To protect your investment, see the 'Notes and Maintenance' section on the second page of this instruction manual.

