

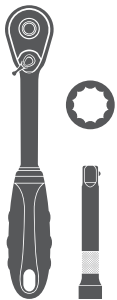
### Parts List

1	Driver / left, <a href="#">side bar</a> / running board
1	Passenger / right, side bar / running board
8	Mounting bracket
16	Clip-on nut, 8mm*
16	Hex bolt, 1.25 x 30mm
16	Hex bolt, 1.25 x 25mm
32	Lock washer, 8mm
32	Flat washer, 8mm
16	Hex nut, 8mm

\* Depending on the year of the vehicle, clip-nuts may or may not be needed

### Tools Required

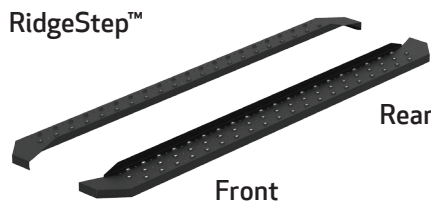
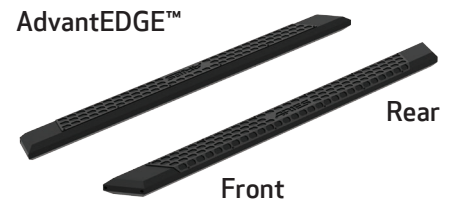
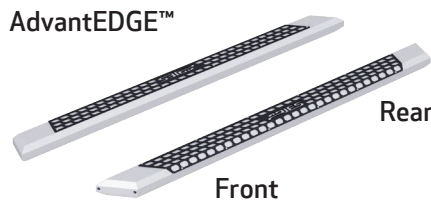
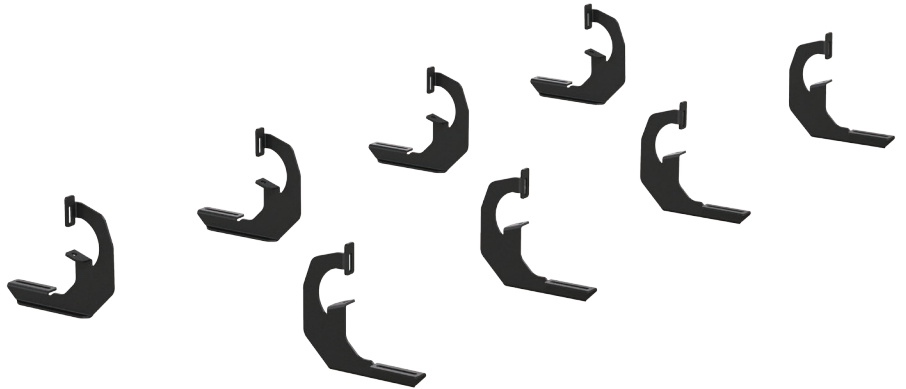
Ratchet	Socket, 13mm
Extension	



### Level of Difficulty

Easy

### Product Image



### Notes and Maintenance

Before you begin installation, read all instructions thoroughly.

Proper tools will improve the quality of installation and reduce the time required.

To protect the product, wax after installing. Regular waxing is recommended to add a protective layer over the finish. Do not use any type of polish or wax that may contain abrasives that could damage the finish.

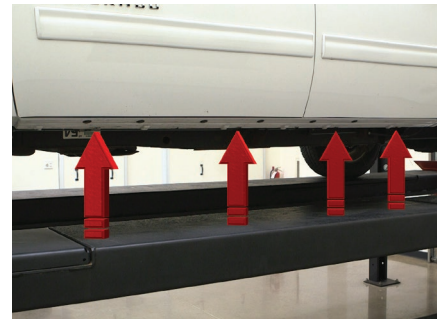
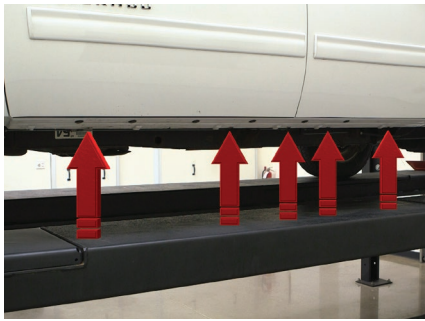
For chrome powder coat, polish may be used to clear small scratches and scuffs on the finish. Mild soap may be used also to clean the product.

For black finishes, mild soap may be used to clean the product.

### Step 1

Locate the five mounting tabs along the bottom edge of the vehicle body.

This installation will use the first, second, fourth and fifth mounting tabs.



### Step 2

Starting at the front driver side mounting location, locate the threaded hole on the inside of the body panel.

Attach the bracket to the body panel using an 8mm hex bolt, lock washer and flat washer.

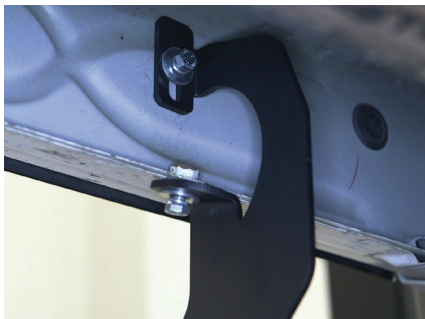
Snug the hardware, but do not fully tighten.



### Step 3

Secure the bracket with a second 8mm hex bolt, lock washer and flat washer using the factory-threaded nut on the edge of the body panel.

Snug the hardware, but do not fully tighten.



### Step 4

Repeat steps 2 and 3 to install the second bracket over the second mounting tab location from step 1.



### Step 5

Locate the fourth and fifth tab locations from step 1.

Insert a clip nut through the access hole and align it over the adjacent smaller hole. Insert a second clip-nut over the lower mounting tab.

Secure the bracket to the vehicle with an 8mm hex bolt, lock washer and flat washer in each mounting location.

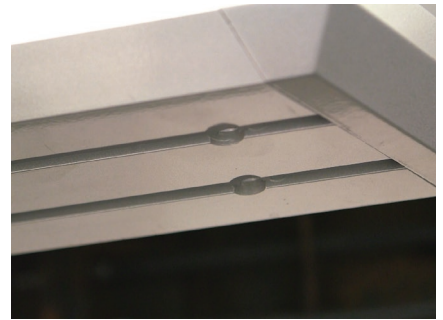


## If installing RidgeStep™ running boards, skip to Step 7A

### Step 6A - AdvantEDGE™ Side Bars

Carefully place the side bar onto the mounting brackets.

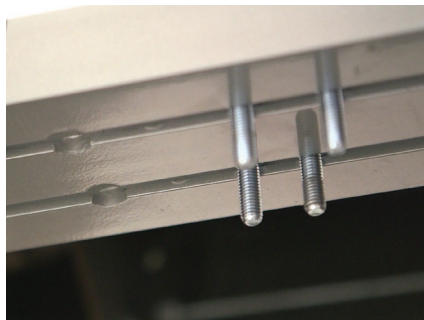
Ensure the outer edge of the side bar is lined up with the outer edge of the mounting brackets.



### Step 6B - AdvantEDGE™ Side Bars

Locate the round slots on the base of the side bar.

Insert four 8mm hex bolts into each slot.



### Step 6C - AdvantEDGE™ Side Bars

Slide the bolts down the rail so that two bolts are positioned for each bracket.

Carefully lift the side bar up and move the bolts as necessary so they are in line with the slots on the mounting brackets.

Secure the running board to the brackets using flat washers, lock washers and 8mm hex nuts. Snug the hardware, but do not fully tighten.



### Step 7A - RidgeStep™ Running Boards

Slide the four C-shaped track mounting brackets into the rail slots.



### Step 7B - RidgeStep™ Running Boards

Carefully place the running board onto the mounting brackets.

Align the C-shaped track mounting brackets with the mounting brackets on the vehicle.



### Step 7C - RidgeStep™ Running Boards

Attach the C-shaped track mounting brackets to the mounting brackets using 8mm hex bolts, lock washers and flat washers.



### Step 8

At this time, adjust the side bars / running boards to the desired location.

With the side bars / running boards in position, it is recommended to tighten all brackets to the vehicle first, followed by the side bar / running boards connections.



## Step 9

Repeat steps 1 through 8 on the passenger side of the vehicle.

Congratulations on the installation of your brand new ARIES AdvantEDGE™ side bars / RidgeStep™ running boards.

With the side bars / running boards installed, periodic inspections should be performed to ensure all mounting hardware remains tight.

To protect your investment, see the 'Notes and Maintenance' section on the first page of this instruction manual.

