

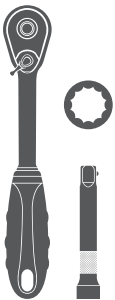
Parts List

| | |
|----|---|
| 1 | Driver / left, side bar / running board |
| 1 | Passenger / right, side bar / running board |
| 4 | Mounting bracket |
| 8 | Clip-on nut, 8mm* |
| 8 | Hex bolt, 1.25 x 30mm |
| 8 | Hex bolt, 1.25 x 25mm |
| 16 | Lock washer, 8mm |
| 16 | Flat washer, 8mm |
| 8 | Hex nut, 8mm |

* Depending on the year of the vehicle, clip-nuts may or may not be needed

Tools Required

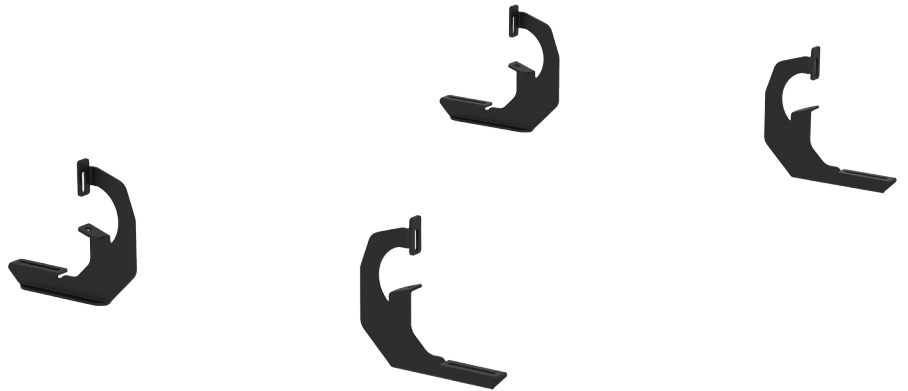
| | |
|-----------|--------------|
| Ratchet | Socket, 13mm |
| Extension | |



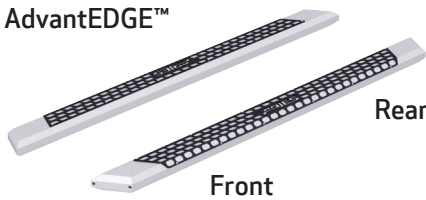
Level of Difficulty

Easy

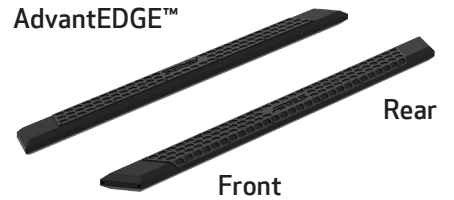
Product Image



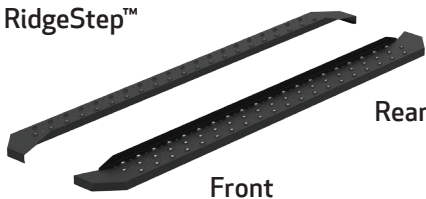
AdvantEDGE™



AdvantEDGE™



RidgeStep™



Notes and Maintenance

Before you begin installation, read all instructions thoroughly.

Proper tools will improve the quality of installation and reduce the time required.

To protect the product, wax after installing. Regular waxing is recommended to add a protective layer over the finish. Do not use any type of polish or wax that may contain abrasives that could damage the finish.

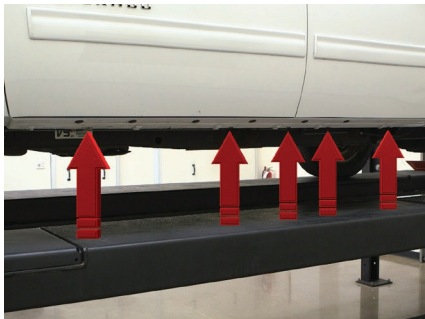
For chrome powder coat, polish may be used to clear small scratches and scuffs on the finish. Mild soap may be used also to clean the product.

For black finishes, mild soap may be used to clean the product.

Step 1

Locate the five mounting tabs along the bottom edge of the vehicle body.

This installation will use the first and fifth mounting tabs.



Step 2

Starting at the front driver side mounting location, locate the threaded hole on the inside of the body panel.

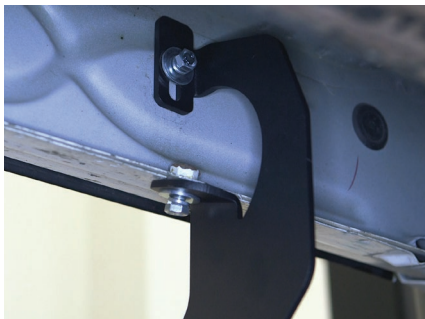
Attach the bracket to the body panel using an 8mm hex bolt, lock washer and flat washer.

The bolt should only be finger tight to allow for adjustment later in the installation process.



Step 3

Secure the bracket with a second 8mm hex bolt, lock washer and flat washer using the factory threaded nut on the edge of the body panel.



Step 4

Locate the fifth tab location from step 1.

Insert a clip nut through the access hole and align it over the adjacent small hole and over the lower mounting tab.

Secure the bracket to the vehicle with an 8mm hex bolt, lock washer and flat washer in each mounting location.

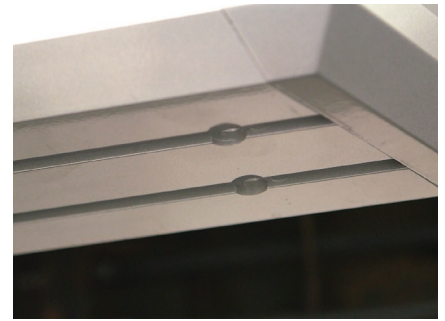


Step 5A - AdvantEDGE™ Side Bars

Carefully place the side bar onto the mounting brackets.

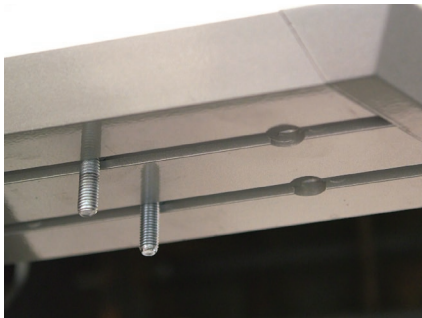
Ensure outer edge of the side bar is lined up with the outer edge of the mounting brackets.

Begin by locating the round rail slots closest to the front tire underneath the side bar.



Step 5B - AdvantEDGE™ Side Bars

Insert four 8mm hex bolts into the rail slots, two by the front tire opening and two by the back tire opening.



Step 5C - AdvantEDGE™ Side Bars

Slide the bolts down the rail next to the mounting brackets.

Carefully lift the side bar up and move the bolts so they are in line with the slots on the mounting brackets.

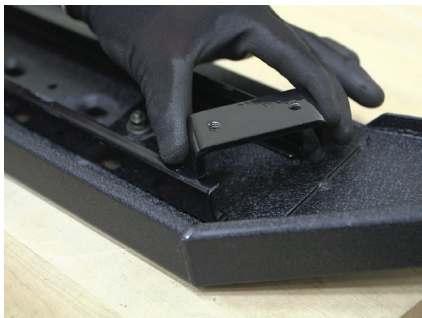
Secure the bracket to the side bar using a flat washer, lock washer and 8mm hex nut loosely to allow for adjustments to the side bar.



Step 5A - RidgeStep™ Running Boards

Slide the C-shaped track mounting brackets into the rail slot.

Insert all both of the brackets into the rail slot before placing RidgeStep™ board onto the mounting brackets.



Step 5B - RidgeStep™ Running Boards

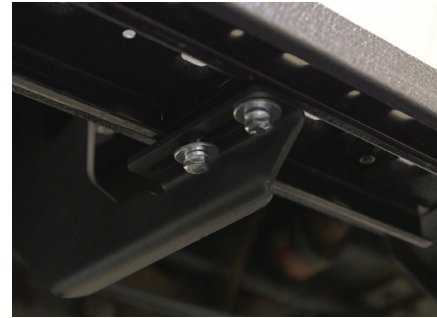
Carefully place the RidgeStep™ board onto the mounting brackets.

Align the C-shaped track mounting brackets with the mounting brackets on the vehicle.



Step 5C - RidgeStep™ Running Boards

Attach the C-shaped track mounting brackets to the mounting brackets using an 8mm hex bolt, lock washer and flat washer.



Step 6

At this time, adjust the side bars / running boards to the desired location.

With the side bars / running boards in position, tighten all hardware to them and the vehicle.



Step 7

Repeat steps 1 through 6 on the passenger side of the vehicle.

Congratulations on the installation of your brand new ARIES AdvantEDGE™ side bars / RidgeStep™ running boards.

With the side bars / running boards installed, periodic inspections should be performed to ensure all mounting hardware remains tight.

To protect your investment, we recommend you apply a layer of nonabrasive wax.

