



INSTALLATION INSTRUCTIONS

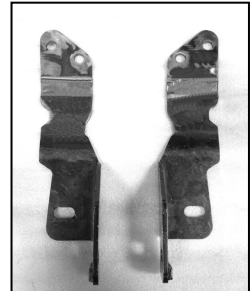
4" BULL BAR

07 GMC SIERRA 2500 / 07 CHEVY SILVERADO 2500

45-4006

PARTS LIST:

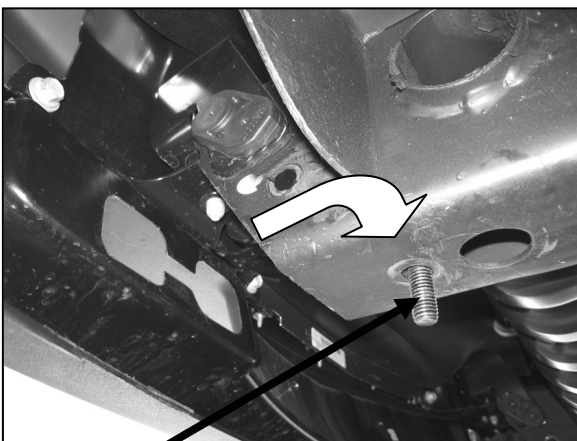
1	Bull Bar	8	12-1.75mm x 30mm Hex Head Bolts
1	Driver/Left Mounting Bracket	8	12mm Nylock Nuts
1	Passenger/Right Mounting Bracket	16	12mm ID x 29mm OD x 3mm Flat Washers



PROCEDURE:

1. REMOVE CONTENTS FROM BOX. VERIFY ALL PARTS ARE PRESENT. READ INSTRUCTIONS CAREFULLY BEFORE STARTING INSTALLATION. DO NOT ATTEMPT INSTALLATION ALONE; PERSONAL INJURY OR DAMAGE TO THE TRUCK MAY RESULT.
2. **NOTE:** It may be necessary to remove/relocate front license plate and license plate bracket. It is not required, but strongly recommended. If local/state law requires a license plate, license plate relocation kit is available.
3. From underside of vehicle, remove the factory tow hooks from vehicle. **NOTE:** This Bull Bar is not compatible with factory tow hooks, so you will not be reinstalling factory tow hooks back onto vehicle.
4. Determine driver and passenger side Mounting Brackets. Insert (1) 12mm x 30mm Hex Head Bolt with (1) 12mm Flat Washer on the bottom factory hole of the frame (**Figure 1**). From behind the bumper, slide driver side Mounting Bracket through tow hook factory hole. Orient Mounting Bracket to its mounting position (**Figure 2**). **NOTE:** May have to cut bumper opening for Mounting Bracket to fit (**Figure 3**). Partially attach bottom bolt with the included (1) 12mm Nylock Nut with (1) 12mm Flat Washers (**Figure 4**).
5. Proceed to attach the side of the Mounting Bracket to frame using the same hardware listed in step four (**Figure 4**). Do not tighten at this time.
6. Repeat steps 4 & 5 for passenger side Mounting Bracket.
7. With help position Bull Bar on the inner side of Mounting Brackets. Attach Bull Bar to Mounting Bracket using the included (4) 12mm x 30mm Hex Head Bolts, (4) 12mm Nylock Nuts, (8) 12mm Flat Washers (**Figure 5**). Do not tighten at this time.
8. Level and adjust Bull Bar; then tighten all hardware at this time.
9. Do periodic inspections to the installation to make sure that all hardware is secure and tight.

DRIVER SIDE MOUNTING BRACKET INSTALLATION SHOWN



12mm x 30mm Hex Head Bolt w/ 12mm Flat Washers

Figure 1

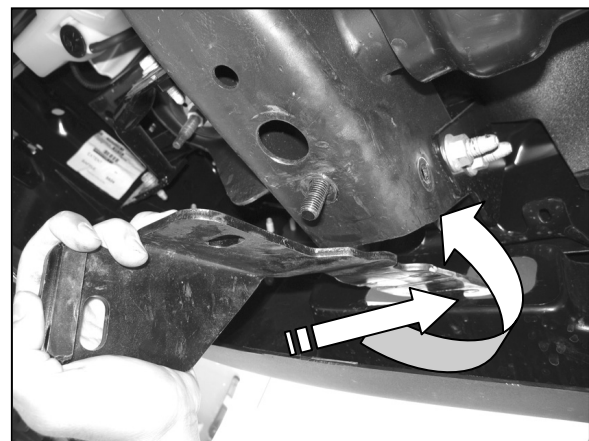


Figure 2

May have to cut plastic opening for Mounting Bracket to fit

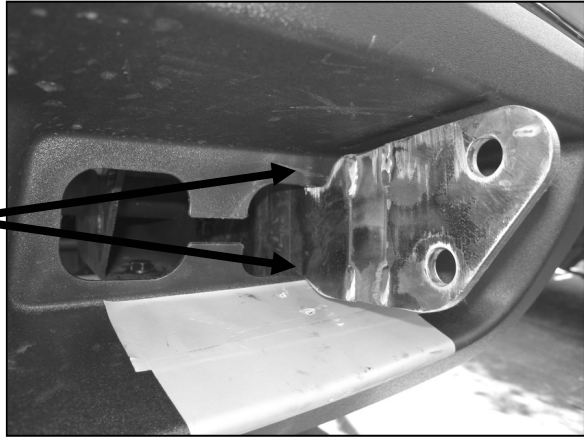
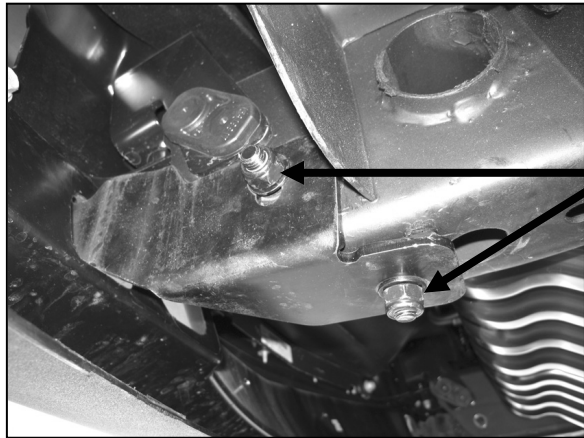


Figure 3



12mm x 30mm Hex Head Bolts, 12mm Flat Washers, & 12mm Nylock Nuts

Figure 4

Installation Complete



12mm x 30mm Hex Head Bolts, 12mm Flat Washers, & 12mm Nylock Nuts

Figure 5



Figure 6