

INSTALLATION INSTRUCTIONS

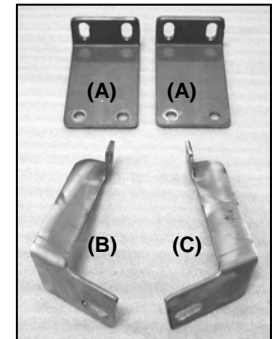
GRILLE GUARD

2008 FORD SUPER DUTY F250/F350

PART NUMBER 3061/3061-2

PARTS LIST:

1	Grille Guard	2	10mm Nylock Nuts
2	Mounting Brackets (A)	4	10mm ID x 26mm OD x 3mm Flat Washers
1	Driver Side Top Bracket (C)	4	12-1.75mm x 30mm Hex Head Bolts
1	Passenger Side Top Bracket (B)	4	12mm Nylock Nuts
2	10-1.50mm x 25mm Button Head Bolts	8	12mm ID x 30mm OD x 3mm Flat Washers



PROCEDURE:

- 1. REMOVE CONTENTS FROM BOX. VERIFY ALL PARTS ARE PRESENT. READ INSTRUCTIONS CAREFULLY BEFORE STARTING INSTALLATION.**
- From front of vehicle remove the passenger side bumper mount bolts. **WARNING!** Do not remove passenger and driver bumper mount bolts at the same time. Remove one side at a time.
- Place Mounting Bracket onto vehicle and line it up against the gusset bend on the frame. Leave about 1/8" clearance between bottom of Mounting Bracket and bumper. Secure Mounting Bracket to vehicle using the factory bolts (Figure 1). Tighten these bolts at this time.
- Once the passenger side Mounting Bracket is fully tightened, repeat steps 2 & 3 for driver side Mounting Bracket. Tighten driver side Mounting Bracket before going to the next step.
- Open the hood and determine the Top Bracket mounting location. Remove the passenger side inner factory bolt located by the latch released. Place Top Bracket and attach it to vehicle using the factory bolt (Figure 2). Do not tighten at this time.
- Repeat step 5 for driver side Top Bracket installation.
- With help position Grille Guard on the outer side of Mounting Brackets. Attach Grille Guard to Mounting Brackets using the included (4) 12- 1.75mm x 30mm Hex Head Bolts, (4) 12mm Nylock Nuts, and (8) 12mm Thick Flat Washers (Figure 3). Do not tighten at this time.
- Attach Grille Guard to Top Brackets using the included (2) 10-1.50mm x 25mm Button Head Bolts, (2) 10mm Nylock Nuts, and (2) 10mm Flat Washers (Figure 4). Do not tighten at this time.
- Level and adjust Grille Guard as desired, then tighten all hardware at this time.
- Do periodic inspections to the installation to make sure that all hardware is secure and tight..

(Passenger Side Mounting Bracket Installation Shown)

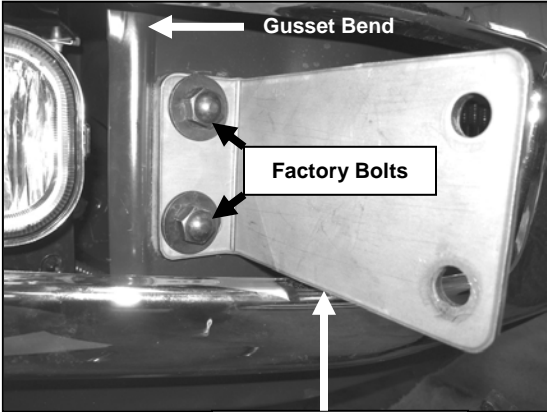


Figure 1

Leave 1/8" clearance between Mounting Bracket and bumper

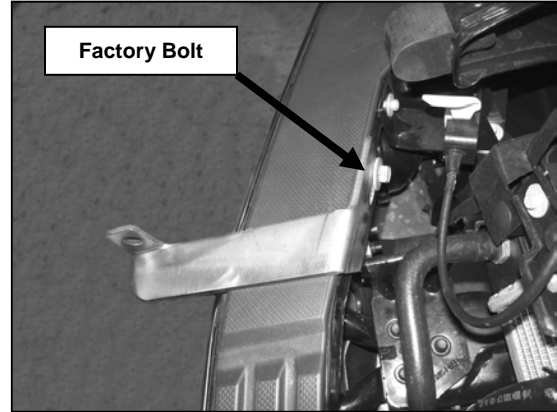


Figure 2

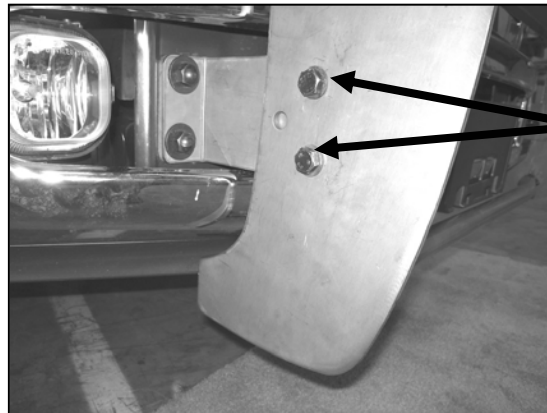


Figure 3

12mm x 30mm Hex Head Bolts,
12mm Nylock Nuts,
12mm Thick Flat Washer

10mm x 25 Button
Head Bolt,
10mm Nylock Nut,
10mm Flat Washer

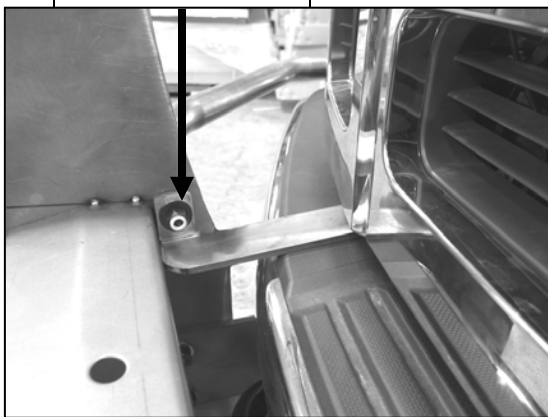


Figure 4

Installation Complete



Figure 5