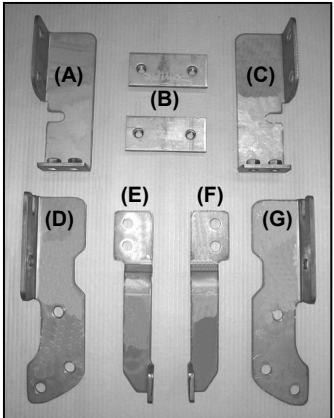




INSTALLATION INSTRUCTIONS
GRILLE GUARD
07 FORD EXPEDITION
PART#3060-2/3060

PARTS LIST:

1	Grille Guard	2	10-1.50mm x 25mm Button Head Bolts
1	Driver Side Mounting Bracket (D)	4	10-1.50mm x 25mm Hex Head Bolts
1	Passenger Side Mounting Bracket (G)	4	10-1.50mm x 30mm Hex Head Bolts
1	Driver Side Top Bracket (E)	12	10mm Flat Washers
1	Passenger Side Top Bracket (F)	2	10mm Nylock Nuts
1	Driver Side Top Support Bracket (A)	4	10mm Lock Washers
1	Passenger Side Top Support Bracket (C)	6	12-1.75mm x 30mm Hex Head Bolts
2	Double Nut Plate (B)	6	12mm Nylock Nuts
		12	12mm Flat Washers

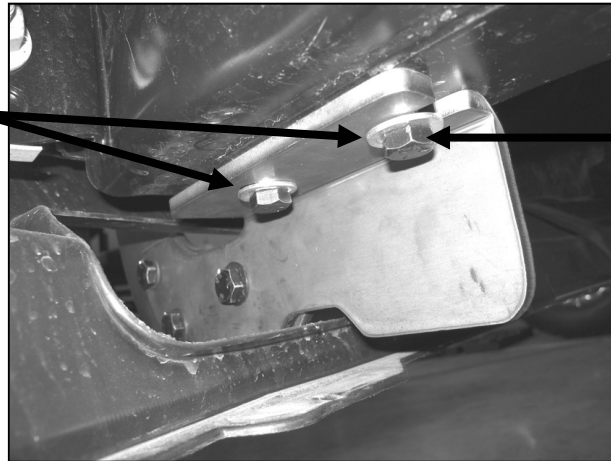


PROCEDURE:

- 1. REMOVE CONTENTS FROM BOX. VERIFY ALL PARTS ARE PRESENT. READ INSTRUCTIONS CAREFULLY BEFORE STARTING INSTALLATION.**
2. Insert (1) Double Nut Plate into front of driver side frame so threaded nuts line up with existing holes on the frame.
3. Partially thread (1) 10-1.50mm x 30mm Hex Head Bolt, (1) 10mm Lock Washer, and (1) 10mm Flat Washer through existing rear hole and into previously inserted Double Nut Plate. Insert driver side Mounting Bracket through previously inserted bolt using the open slotted hole on the Mounting Bracket (Figure 1).
4. Attach front side of the driver side Mounting Bracket using the same hardware used in step 3 (Figure 1). Do not tighten at this time.
5. Repeat steps 2-4 for passenger side Mounting Bracket.
6. From underside of vehicle, remove the two existing nuts from the inner side of front bumper mounts. Position driver side Top Support Bracket through existing front bumper mount bolts. Secure Support Bracket using the factory nuts (Figure 2). Tighten these bolts at this time.
7. Through upper driver side corner on the bumper air inlet, insert driver side Top Bracket and attach to previously installed Support Bracket using the included (2) 10-1.50mm x 25mm Hex Head Bolts and (2) 10mm Flat Washers (Figure 3). Do not tighten at this time.
8. Repeat step 6 & 7 for passenger side Top Support Bracket and Top Bracket.
9. With help place Grille Guard up to front of vehicle on the inner side of Mounting Brackets. Attach Grille Guard to Mounting Brackets using the included (6) 12-1.75mm x 30mm Hex Head Bolts, (6) 12mm Nylock Nuts, and (12) 12mm Flat Washers (Figure 4). Do not tighten at this time.
10. Attach Top Support Brackets to Grille Guard using the included (2) 10-1.50mm x 25mm Button Head Bolts, (2) 10mm Nylock Nuts, and (4) 10mm Flat Washers (Figure 3). Do not tighten at this time.
11. Level and adjust Grille Guard as desired, then tighten all hardware at this time.
12. Do periodic inspections to the installation to make sure that all hardware is secure and tight.

(Driver Side Installation Shown)

**10mm x 30mm Hex Head Bolts,
10mm Lock Washers,
10mm Flat Washers**



Insert this bolt first

Figure 1

**10mm x 25mm Hex Head Bolts,
10mm Flat Washers**

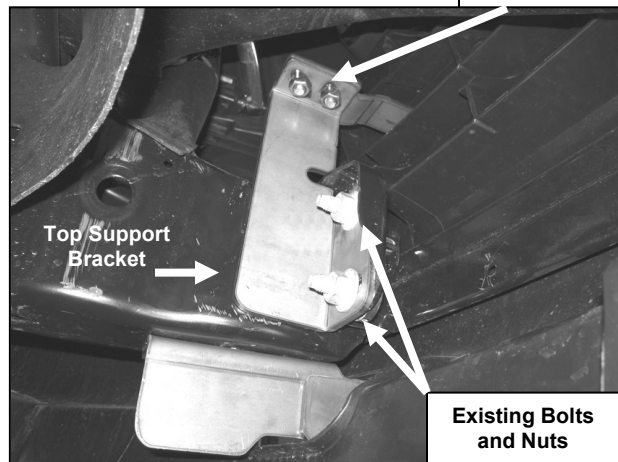


Figure 2

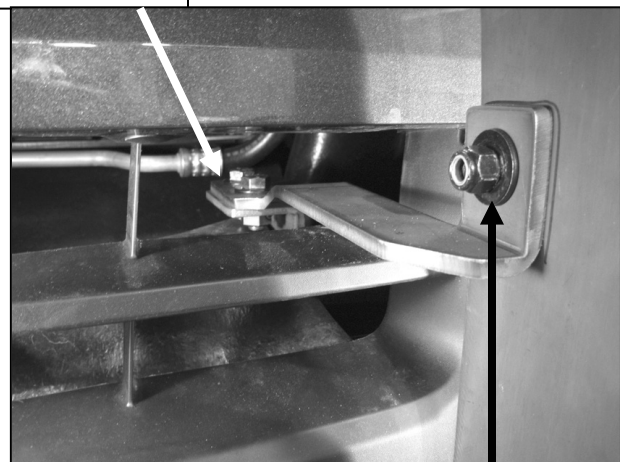


Figure 3

**10mm 25mm Button Head Bolt,
10mm Flat Washers,
10mm Nylock Nut**

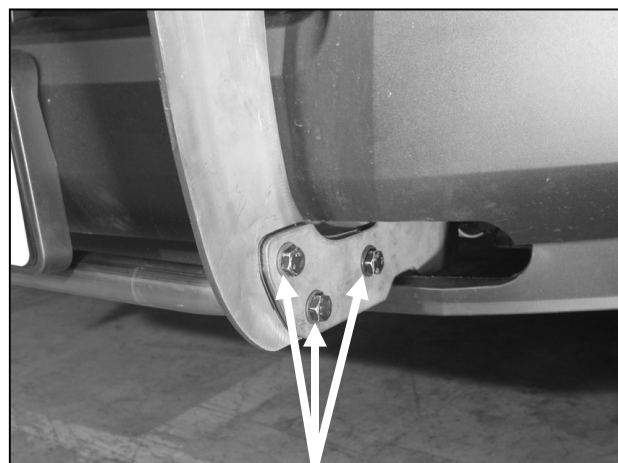


Figure 4

**12mm 30mm Hex Head Bolt,
12mm Flat Washers,
12mm Nylock Nut**

Installation Complete



Figure 5