



INSTALLATION MANUAL

2074141

Parts List

1	Driver / left rocker step
1	Passenger / right rocker step
12	Hex bolt, M8 - 1.25 x 30mm
6	Flat washer, M8 x 16mm OD
6	Flat washer, M8 x 24mm OD
12	Lock washer, M8
6	Lock nut, M8

Tools Required

Torque wrench	Socket, 13mm
Extension	Level

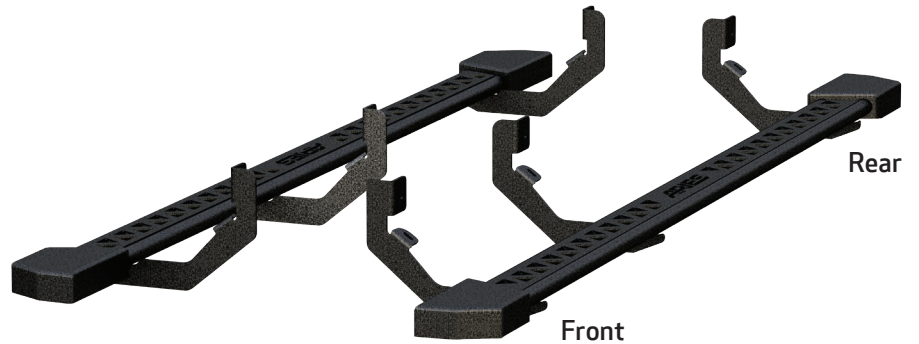
Torque Specifications

	METRIC	SAE
M6 bolt	3 ft.-lbs.	
M8 bolt	7 ft.-lbs.	
M10 bolt	16 ft.-lbs.	
M12 bolt	28 ft.-lbs.	
1/4" bolt	3 ft.-lbs.	
5/16" bolt	7 ft.-lbs.	
3/8" bolt	16 ft.-lbs.	
7/16" bolt	20 ft.-lbs.	
1/2" bolt	28 ft.-lbs.	

Level of Difficulty

Easy

Product Image



Notes and Maintenance

Before you begin installation, read all instructions thoroughly.

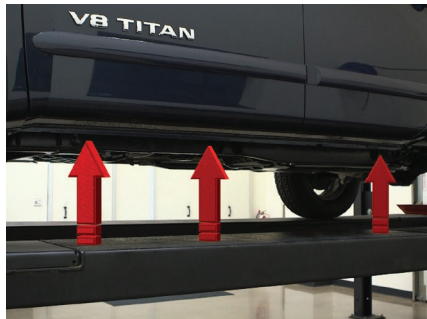
Proper tools will improve the quality of installation and reduce the time required.

For black finishes, mild soap may be used to clean the product.

Refer to the table to the left when securing hardware during the installation process to help prevent damage to the product or vehicle.

Step 1

Starting on the driver-side, locate the four mounting locations underneath the vehicle.



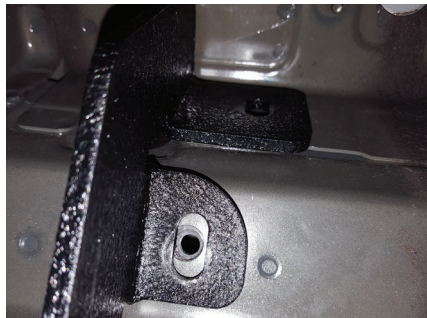
Step 2

With help, lift the driver-side rocker step up to the vehicle. Align the mounting holes on the rocker step with the mounting points on the vehicle.

Secure the lower rocker step mounting tabs to the vehicle using M8 hex head bolts, M8 x 16mm flat washers and M8 lock washers. Secure the larger top rocker step mounting tabs using M8 hex head bolts, M8 x 24mm flat washers and M8 lock washers.

Note: On older model vehicles with an M8 stud in the top mounting position, secure the top mounting tabs with M8 x 24mm flat washers, M8 lock washers and M8 - 1.25 hex nuts.

Tighten all hardware.



Step 3

Repeat steps 1 through 2 on the passenger side of the vehicle.

Congratulations on the installation of your new ARIES rocker steps.

With the rocker steps installed, periodic inspections should be performed to ensure all mounting hardware remains tight.

