



INSTALLATION MANUAL

AR111950

Parts List

2	18" x 18" mud flaps
2	Mounting brackets
2	Square rectangle hangers, 1"
2	Rectangle sleeves
12	Bolts, 4mm x 40mm
24	Flat washer, 4mm
24	Lock washer, 4mm
8	Nuts, 4mm
2	Bolt, 8mm x 12mm
8	Bolt, self tapping, 3/8" x 1"
2	Safety lynch pins

Tools Required

Ratchet	Socket, 7mm
Extension	Socket, 14mm
Square	Socket, 16mm
Paint marker	Cut-off tool
Phillips screwdriver	

Torque Specifications

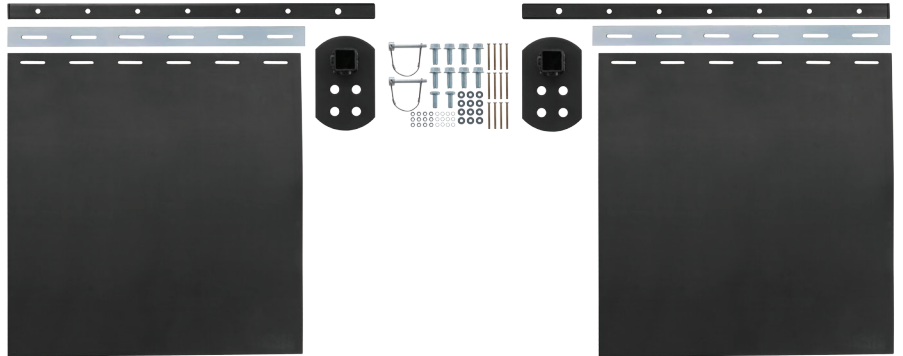
METRIC	M6 bolt	3 ft.-lbs.
	M8 bolt	7 ft.-lbs.
	M10 bolt	16 ft.-lbs.
	M12 bolt	28 ft.-lbs.
SAE	1/4" bolt	3 ft.-lbs.
	5/16" bolt	7 ft.-lbs.
	3/8" bolt	16 ft.-lbs.
	7/16" bolt	20 ft.-lbs.
	1/2" bolt	28 ft.-lbs.

Use above torque setting unless otherwise noted

Level of Difficulty

Easy

Product Image



Notes and Maintenance

Before you begin installation, read all instructions thoroughly.

Proper tools will improve the quality of installation and reduce the time required.

If drilling is required use 5/16" drill bit for a pilot hole and 3/8" x 1" self tapping bolts

Refer to the table to the left when securing hardware during the installation process to help prevent damage to the product or vehicle.

Step 1

It is important to note that these installation instructions are Jeep Wrangler specific, as other vehicle installation may be different.

During this installation, a lift is shown, however the use of a lift is not required.



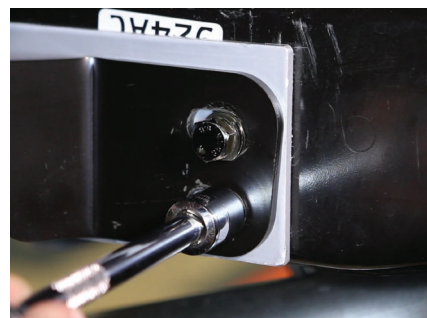
Step 2

Take the mounting bracket and line it up to where the mud flap location is preferred. For installation on a Jeep Wrangler, we will be using existing holes on the back bumper.

IMPORTANT: A minimum of two bolts will provide ample support and allows proper desired placement of the mud flaps.

Locate the factory bolts attaching the rear bumper to the body. Using a 16mm socket, loosen and remove the bolts.

With the factory bolts removed, hold the mounting bracket in the desired mounting location and reinstall the factory bolts.



Step 3

If trimming is needed, temporarily insert the hanger into the bracket and mark where trimming will be needed.

NOTE: Cutting is done on the outer end that does not mount into the bracket.



Step 4

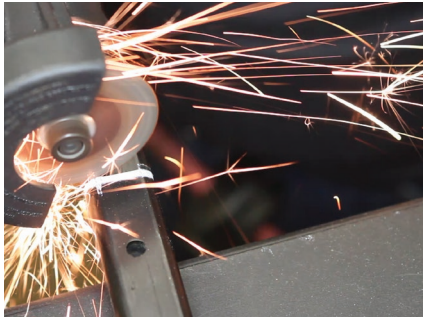
Using a square, draw a cut line around the hanger to help create a straighter cut.



Step 5

Using a cutoff wheel to cut along the marked line.

After finishing the cut, use the paint marker to cover the cut end. This will help prevent rust.



Step 6

Insert the plug into the cut end of the hanger.



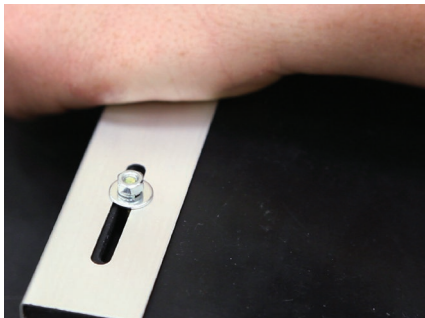
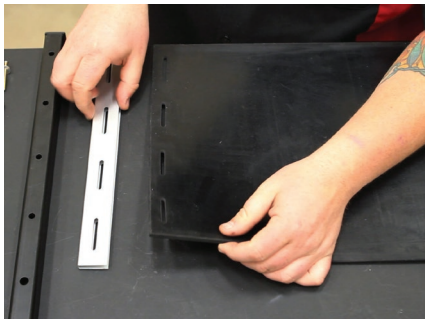
Step 7

To assemble the mud flap slide the steel hanger over the rubber flap.

NOTE: The mud flap is to be attached to the opposite side of the larger hole.

Insert a 4mm bolt with a locking and flat washer into the mounting hole. Attach another flat and locking washer on the other side. Fasten with a 4mm nut.

Do this for every mounting hole. Tighten with a Philips head screwdriver and an 7mm socket.



Step 8

Insert the steel hanger into the mount bracket and slide in the safety lunch pins into the holes.



Step 9

Thread in the 8mm bolt to act as a set screw and tighten with a 14mm socket to secure in place.



Step 10

Repeat above steps for the other side.



Step 11

Remember to do periodic inspection to make sure that all the hardware is secure and tight.



Step 12

Congratulations on the installation of your new ARIES removable mud flaps.

