

# INSTALLATION MANUAL

4524

## Level of Difficulty

Easy

## Parts List

|    |                            |
|----|----------------------------|
| 1  | Driver / left side bar     |
| 1  | Passenger / right side bar |
| 6  | Mounting brackets          |
| 6  | Bolt plate                 |
| 18 | Flat washer, M8            |
| 18 | Lock washer, M8            |
| 18 | Hex nut, M8                |
| 24 | Flat washer, M6            |
| 24 | Hex nut, M6                |

## Additional Hardware\*

|    |                 |
|----|-----------------|
| 24 | T-bolt bolt, M8 |
| 24 | Flat washer, M8 |
| 24 | Lock washer, M8 |
| 24 | Hex nut, M8     |

\* Aluminum side bars are supplied with additional hardware. Quantities listed are in addition to the standard supplied hardware.

## Tools Required

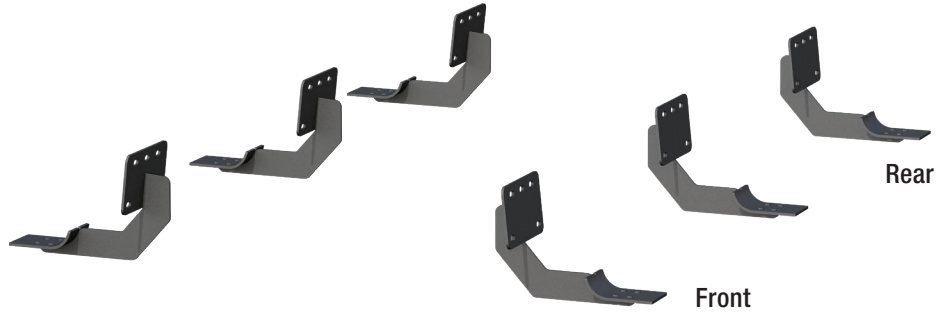
|            |               |
|------------|---------------|
| Socket set | Utility knife |
| Ratchet    | Level         |

## Torque Specifications

|  | Metric     | SAE         |
|--|------------|-------------|
|  | M6 bolt    | 3 ft.-lbs.  |
|  | M8 bolt    | 7 ft.-lbs.  |
|  | M10 bolt   | 16 ft.-lbs. |
|  | M12 bolt   | 28 ft.-lbs. |
|  | 1/4" bolt  | 3 ft.-lbs.  |
|  | 5/16" bolt | 7 ft.-lbs.  |
|  | 3/8" bolt  | 16 ft.-lbs. |
|  | 7/16" bolt | 20 ft.-lbs. |
|  | 1/2" bolt  | 28 ft.-lbs. |

Use above torque setting unless otherwise noted

## Product Photo



## 6" Oval Side Bars (not included)



## Notes and Maintenance

Before you begin installation, read all instructions thoroughly.

Proper tools will improve the quality of installation and reduce the time required.

To protect the product, wax after installing. Regular waxing is recommended to add a protective layer over the finish. Do not use any type of polish or wax that may contain abrasives that could damage the finish.

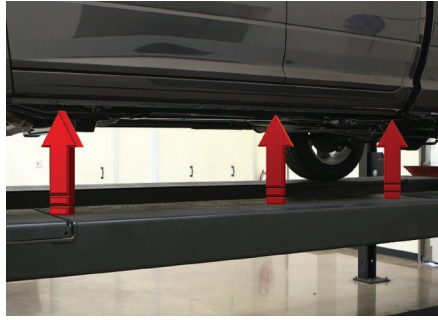
For polished, gloss and other smooth finishes, polish may be used to clear small scratches and scuffs on the finish.

Mild automotive detergent may be used to clean the product. Do not use dish detergent, abrasive cleaners, abrasive pads, wire brushes or other similar products that may damage the finish.

Refer to the table to the left when securing hardware during the installation process to help prevent damage to the product or vehicle.

### Step 1

Starting on the driver side, locate the three mounting tabs along the bottom edge of the vehicle body.



### Step 2

Starting at the front mounting location, remove any debris from the factory studs. Secure a mounting bracket using an M8 flat washer, lock washer and hex nut.

**Note:** Apply anti-seize to the studs to keep the nuts from seizing up. Repeat this process for the middle and rear mounting locations.

Snug the hardware, but do not fully tighten.



### Step 3

Repeat step 2 for the front, middle and rear mounting locations on the passenger side.



### Step 4

Carefully place the side bar onto the brackets with the larger step pad towards the front of the vehicle.



### Step 5A - For Polished Stainless Steel Side Bars

Insert a bolt plate into the bottom channels of the side bar as shown.

Slide the bolt plate forward to the front bracket and insert the studs through the bracket cradle. Repeat this for the middle and rear brackets.

Secure the side bar to the brackets using twelve M6 flat washers and hex nuts.

Snug the hardware, but do not fully tighten.



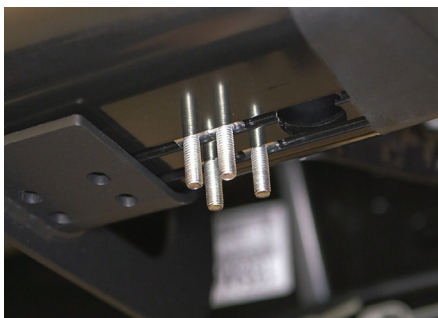
### Step 5B - For Semi-Gloss Black, Aluminum Side Bars

Insert four T-bolts into the bottom channels of the side bar as shown.

Slide the bolts forward to the front bracket and insert through the bracket cradle. Repeat this for the middle and rear brackets.

Secure the side bar to the brackets using twelve M8 flat washers, lock washers and hex nuts.

Snug the hardware, but do not fully tighten.



### Step 6

Adjust and level the side bar, centering it between the front and rear wheel wells.

With the side bar in position, it is recommended to tighten all brackets to the vehicle first, followed by the side bar connections.



### Step 7

Repeat steps 5 through 7 on the passenger side of the vehicle.

Congratulations on the installation of your new ARIES 6" oval side bars.

With the side bars installed, periodic inspections should be performed to ensure all mounting hardware remains tight.

To protect your investment, see the 'Notes and Maintenance' section on the first page of this instruction manual.

