

### Parts List

1	Driver / left side bar
1	Passenger / right side bar
6	Mounting bracket, universal
6	Stainless steel bolt plate, M6
24	Flat washer, M6
24	Nylock nut, M6
12	Hex bolt, M8 - 1.25 x 30mm
12	Flat washer, M8
12	Lock washer, M8
6	Flange nut, M8

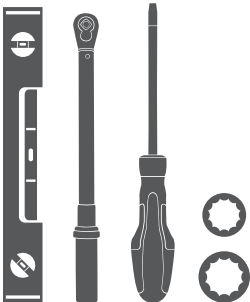
### Additional Hardware\*

24	T-bolt, M8 x 1.25 - 25mm, CL8.8
24	Flat washer, M8
24	Lock washer, M8
24	Hex nut, M8 x 1, CL8.8

\* Aluminum bars are supplied with additional hardware. Quantities listed are in addition to the standard supplied hardware.

### Tools Required

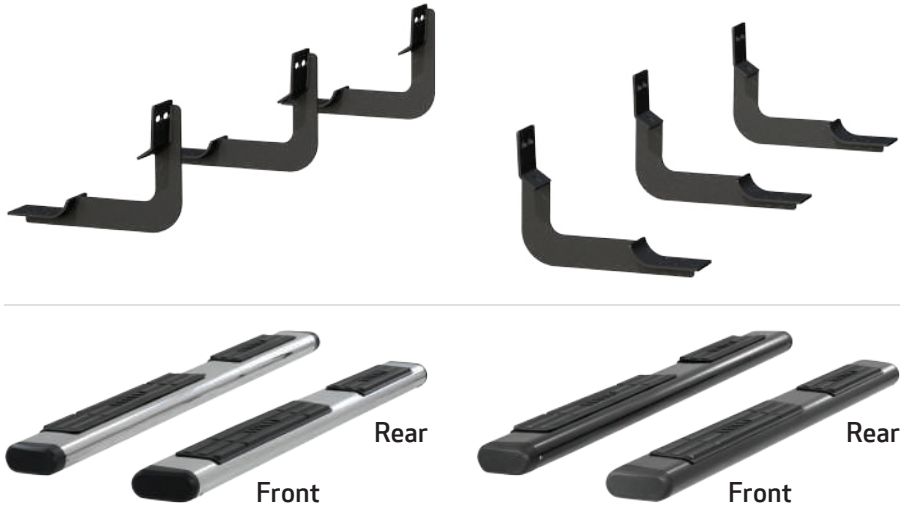
Torque wrench	Socket, 13mm
Flathead screwdriver	Socket, 16mm
Level	



### Level of Difficulty

Easy

### Product Image



### Notes and Maintenance

Before you begin installation, read all instructions thoroughly.

Proper tools will improve the quality of installation and reduce the time required.

To protect the product, wax after installing. Regular waxing is recommended to add a protective layer over the finish. Do not use any type of polish or wax that may contain abrasives that could damage the finish.

For stainless steel and aluminum, polish may be used to clear small scratches and scuffs on the finish. Mild soap may be used also to clean the product.

Torque Specifications		
METRIC	M6 bolt	3 ft.-lbs.
	M8 bolt	7 ft.-lbs.
	M10 bolt	16 ft.-lbs.
	M12 bolt	28 ft.-lbs.
SAE	1/4" bolt	3 ft.-lbs.
	5/16" bolt	7 ft.-lbs.
	3/8" bolt	16 ft.-lbs.
	7/16" bolt	20 ft.-lbs.
	1/2" bolt	28 ft.-lbs.

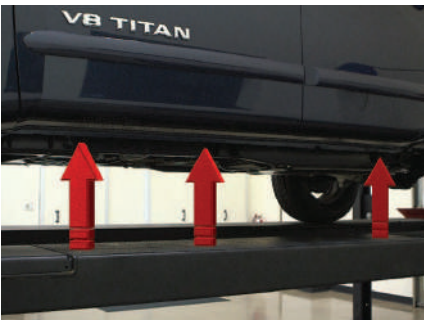
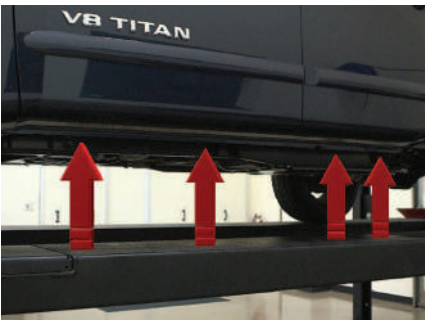
Notes and Maintenance
Before you begin installation, read all instructions thoroughly.
Proper tools will improve the quality of installation and reduce the time required.
For chrome powder coat, polish may be used to clear small scratches and scuffs on the finish. Mild soap may be used also to clean the product.
For black finishes, mild soap may be used to clean the product.
Refer to the table to the left when securing hardware during the installation process to help prevent damage to the product or vehicle.

### Step 1

Starting on the driver side, locate the four mounting tabs along the bottom edge of the bottom edge of the vehicle body.

This installation will use the first, second and fourth mounting tabs.

The mounting brackets are universal and will fit the driver and passenger sides.

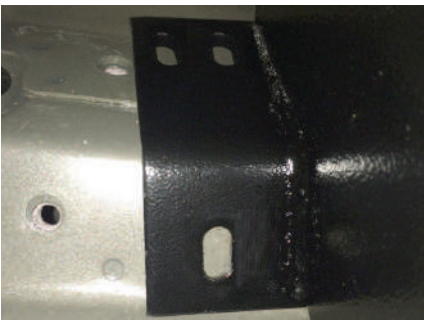


### Step 2

Starting at the front driver-side mounting location, using a flathead screwdriver, remove the plastic plugs to expose the threaded inserts on the rocker panel.

**Old-style vehicles** may have a combination of threaded inserts and threaded studs.

**New-style vehicles** will have two threaded inserts as shown.



### Step 3

Place the mounting bracket onto the vehicle and secure using an 8mm flange nut on the top mounting point and an 8mm hex bolt, lock washer and flat washer on the lower mounting point.

**On newer vehicles** with two threaded inserts, install the bracket with two 8mm hex bolts, two 8mm lock washers and two 8mm flat washers.

Snug the hardware, but do not fully tighten.



#### Step 4

Repeat steps 2 and 3 to install the middle and rear mounting brackets.

Carefully place the side bar onto the brackets with the larger step pad towards the front of the vehicle.



#### Step 5A - For Polished Stainless Steel Side Bars

Insert a bolt plate into the bottom channels of the side bar as shown.

Slide the bolt plate forward to the front bracket and insert the studs through the bracket cradle. Repeat this for the middle and rear brackets.

Secure the side bar to the brackets using twelve 6mm flat washers and hex nuts.

Snug the hardware, but do not fully tighten.



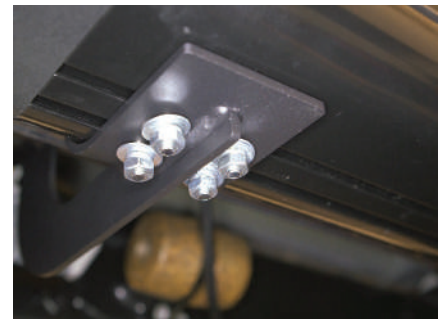
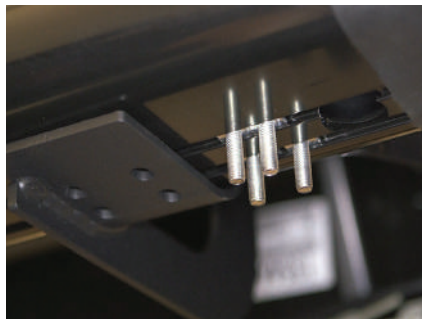
#### Step 5B - For Semi-Gloss Black, Aluminum Side Bars

Insert four T-bolts into the bottom channels of the side bar as shown.

Slide the bolts forward to the front bracket and insert them through the bracket cradle. Repeat this for the middle and rear brackets.

Secure the side bar to the brackets using twelve 8mm flat washers, lock washers and hex nuts.

Snug the hardware, but do not fully tighten.



#### Step 6

Adjust and level the side bar, centering it between the front and rear wheel wells.

With the side bar in position, it is recommended to tighten all brackets to the vehicle first, followed by the side bar connections.



## Step 7

Repeat steps 1 through 6 on the passenger side of the vehicle.

Congratulations on the installation of your new ARIES 6" oval side bars.

With the side bars installed, periodic inspections should be performed to ensure all mounting hardware remains tight.

To protect your investment, see the 'Notes and Maintenance' section on the second page of this instruction manual.

