

INSTALLATION MANUAL

2563001

Level of Difficulty

Moderate

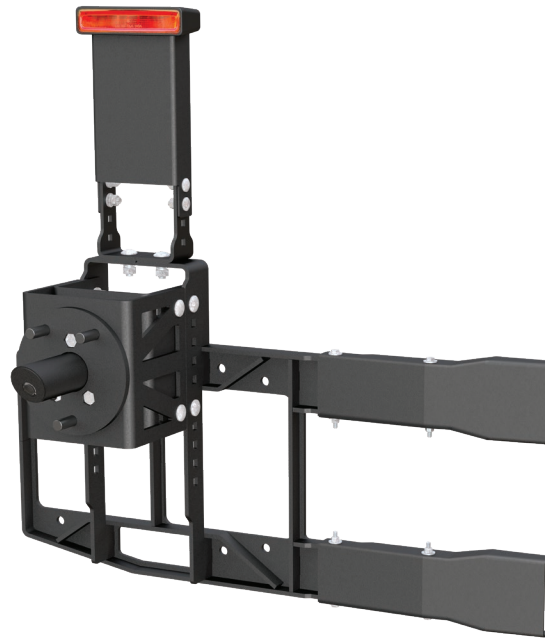
Parts List

1	Main center section
1	Brake light, upright
1	Brake light, pedestal
1	Wheel holder
1	Wheel holder adapter
1	Camera holder
1	Camera housing
1	Camera removal tool
4	Rubber spacer washer
3	Tube spacer
2	Hinge covers
3	Button head screw, M2
2	Button head screws, M6
4	Hex bolt, M6 x 100mm
8	Flat washer, M6
4	Nylock nut, M6
4	Carriage bolt, M8 x 25mm
4	Flat washer, M8
4	Lock washer, M8
4	Hex nut, M8
3	Hex bolt, M10 x 80mm
3	Hex bolt, M10 x 30mm
4	Hex bolt, M10 x 60mm
10	Carriage bolt, M10 x 30mm
13	Flat washer, M10 x 20mm OD
4	Flat washer, M10 x 30mm OD
13	Hex nut, M10
17	Lock washer, M10
3	Zip tie
1	Foam tape

Tools Required

Ratchet	Allen wrench set
Socket set	Level
Torque wrench	--

Product Photo



NOTICE

Before you begin installation, read all instructions thoroughly.

Proper tools will improve the quality of installation and reduce the time required.

To help prevent damage to the product or vehicle, refer to the specified torque specifications when securing hardware during the installation process.

Maintenance

To protect the product, wax after installing. Regular waxing is recommended to add a protective layer over the finish. Do not use any type of polish or wax that may contain abrasives that could damage the finish.

For polished, gloss and other smooth finishes, polish may be used to clear small scratches and scuffs on the finish.

Mild automotive detergent may be used to clean the product. Do not use dish detergent, abrasive cleaners, abrasive pads, wire brushes or other similar products that may damage the finish.

Torque Specifications

Metric	Torque		SAE	Torque	
	Bolt	Washer		Bolt	Washer
M6 bolt		3 ft-lbs.	1/4" bolt		3 ft-lbs.
M8 bolt		7 ft-lbs.	5/16" bolt		7 ft-lbs.
M10 bolt		16 ft-lbs.	3/8" bolt		16 ft-lbs.
M12 bolt		28 ft-lbs.	7/16" bolt		20 ft-lbs.
--		--	1/2" bolt		28 ft-lbs.

Use above torque setting unless otherwise noted

Step 1

Remove the camera cover from the backup camera in the center of the tire.

Remove the spare tire.



Step 2

Carefully remove the plastic covers from the inside of the tailgate. Remove the clips securing the wiring harness for the third brake light and camera. Pull the harness and grommet out of the back of the tailgate.



Step 3

Remove the factory spare tire carrier by removing the eight bolts securing it to the end gate. The bolts will be reused for the installation of the new spare tire carrier.

Remove both of the factory tire stabilizers at this time.



Step 4

Prior to removing the four bolts from the door hinges, make sure the tailgate is held in place. It is recommended to have assistance to hold the tailgate in place, but shims, straps, etc. can also be used if necessary.

Remove the bolts from the hinges. Place rubber spacer washers in the spaces left by the factory bolt heads.

Apply foam tape to all areas of the spare tire carrier main center section that will directly contact the vehicle.



Step 5

Hold up the main center section of the new tire carrier and secure it to the hinges using the supplied M10 x 60mm bolts, lock washers and flat washers.

Reinstall the eight factory bolts that secured the factory spare tire carrier in place.

Snug the hardware, but do not fully tighten.



Step 6

To ensure the center section of the tire carrier is spaced evenly on the hinges, place one of the hinge covers over the hinge bolts. The end of the cover should be evenly spaced both above and below the factory hinge. There should be no contact with the factory hinge.

Once evenly spaced, remove the cover and tighten all hardware to the recommended torque specifications on page one.

Open and close the door to ensure the unit operates as intended.



Step 7

Place one of the hinge covers over one of the hinges and align it with the holes of the main section. Secure the cover using M6 hex head bolts, flat washers and nylock nuts.

Ensure that the cover is not contacting the hinge.

Repeat this step for the other hinge cover.



Step 8

To remove the factory wiring harness from the tire carrier, remove the screws beneath the third brake light to remove the plastic covering the wiring harness path. Disconnect the clip from the brake light and remove the two screws that secure the brake light in place.

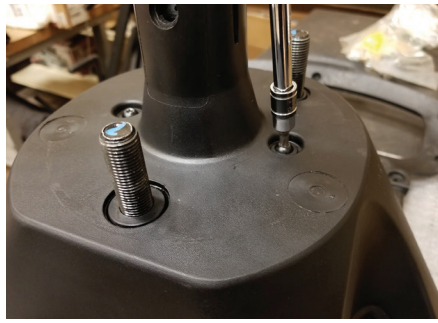


Step 9

Remove the two screws that secure the factory bolt plate in place around the backup camera and remove the bolt plate.

To remove the remaining plastic piece that the camera is connected to, place the provided removal tool between the tire carrier and flanges of the center plastic camera holder. Carefully tap the end of the tool until it lifts the camera holder away from the tire carrier.

Remove the three screws securing the camera to its holder and remove the harness from the camera.

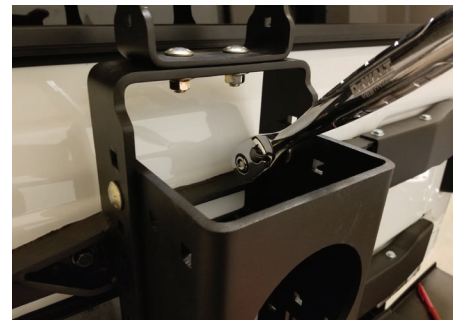


Step 10

Attach the brake light upright to the top of the center section using M10 carriage bolts, lock washers, flat washers and hex nuts.

Determine how high your spare tire needs to sit to clear the rear bumper and attach the wheel holder adapter using four M10 carriage bolts, lock washers flat washers and hex nuts.

Snug the hardware, but do not fully tighten.



Step 11

Place the factory brake light on top of the pedestal and secure it with the original factory screws.

Determine the height the brake light will have to be at in order to be seen above the tire. Secure the pedestal and brake light to the upright using M8 carriage bolts, flat washers, lock washers and hex nuts.

Secure the brake light harness to the brake light.



Step 12

Depending on if the tube spacers are used or not, use either the 30mm or 80mm M10 hex bolts with M10 flat washers, lock washers, and hex nuts to connect the camera housing to the wheel holder. Fully tighten the fasteners.

Secure the wheel holder to the adapter using M10 carriage bolts, flat washers, lock washers and hex nuts. Ensure the wheel holder and adapter are aligned, and the face of the wheel holder is parallel to the center section of the tire carrier.

Tighten all hardware to the torque specifications on page one.



Step 13

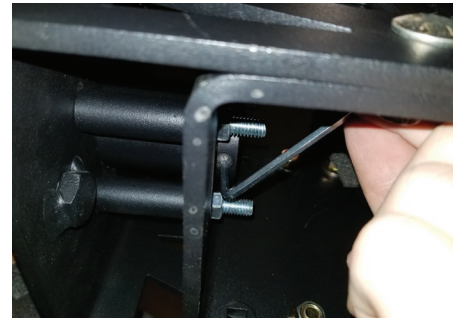
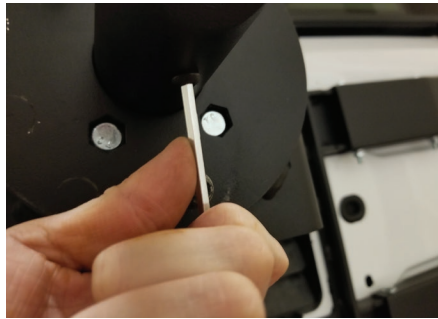
Secure the camera to the camera holder using three M2 button head screws and reattach the camera wire.

Slide the camera into the housing.



Step 14

Secure the camera to the camera housing using the two M6 button head screws.



Step 15

Feed the wiring harness back into the tailgate and secure the grommet into the door. Open the door and reconnect the wiring harness to the clips inside the door.

Replace the plastic covers inside the door ensuring all of the clips are tightly snapped. Use zip ties to secure the wiring harness to the carrier.



Step 16

Secure your spare tire to the carrier.

Congratulations on the installation of your new ARIES spare tire carrier.

With the spare tire carrier installed, periodic inspections should be performed to ensure all mounting hardware remains tight.

To protect your investment, see the 'Notes and Maintenance' section on page one.



Learn more about spare tire covers and carriers we have.