



INSTALLATION MANUAL

Level of Difficulty

Easy

This is the second of two manuals required to complete this installation. The first manual is included with your mounting brackets.

Parts List

- | | |
|---|---|
| 1 | Driver / left AscentStep™ running board |
| 1 | Passenger / right AscentStep™ running board |
| 8 | Mounting plate |

Attachment hardware is supplied with the mounting brackets. Hardware quantities will vary depending on the vehicle application.

Tools Required

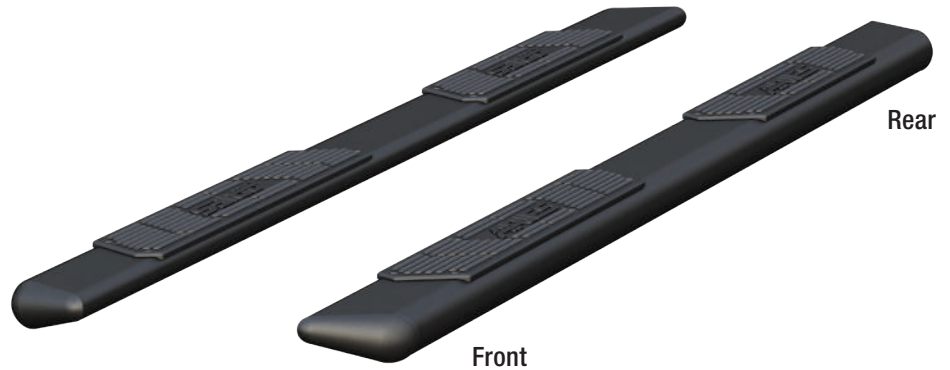
Ratchet set	Torque wrench
-------------	---------------

Torque Specifications

	Metric	SAE
	M6 bolt	3 ft-lbs.
	M8 bolt	7 ft-lbs.
	M10 bolt	16 ft-lbs.
	M12 bolt	28 ft-lbs.
	1/4" bolt	3 ft-lbs.
	5/16" bolt	7 ft-lbs.
	3/8" bolt	16 ft-lbs.
	7/16" bolt	20 ft-lbs.
	1/2" bolt	28 ft-lbs.

Use above torque setting unless otherwise noted

Product Photo



Notes and Maintenance

Before you begin installation, read all instructions thoroughly.

Proper tools will improve the quality of installation and reduce the time required.

To protect the product, wax after installing. Regular waxing is recommended to add a protective layer over the finish. Do not use any type of polish or wax that may contain abrasives that could damage the finish.

For polished, gloss and other smooth finishes, polish may be used to clear small scratches and scuffs on the finish.

Mild automotive detergent may be used to clean the product. Do not use dish detergent, abrasive cleaners, abrasive pads, wire brushes or other similar products that may damage the finish.

Refer to the table to the left when securing hardware during the installation process to help prevent damage to the product or vehicle.

Product Registration

CURT Group stands behind our products with industry leading warranties. You can help us continue to improve our product line and help us understand your needs by registering your purchase by visiting:

At CURT Group, customer is king. We value your feedback and we use that information to make improvements on our products. Please, take a minute and let us know how we are doing.

Step 1

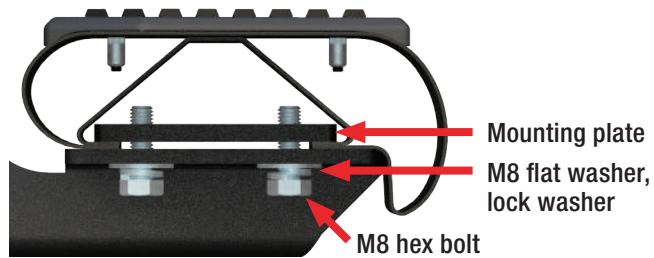
Place the mounting plates into the track on the running board.

Carefully place the running board onto the mounting brackets.

Slide the mounting plates along the track to align with the mounting brackets on the vehicle.

Secure the running board to the mounting brackets using two M8 hex bolts, two lock washers and two flat washers.

Note: The number of mounting brackets may vary based on application. Use one mounting plate per bracket.



Step 2

At this time, adjust the running board to the desired location.

With the running board in position, it is recommended to tighten all brackets to the vehicle first, followed by the running board connections.

For recommended torque specifications, refer to the table on page 1.

Step 3

Repeat all steps for the passenger side of the vehicle.

Congratulations on the installation of your new ARIES AscentStep™ running boards.

With the running boards installed, periodic inspections should be performed to ensure all mounting hardware remains tight.

To protect your investment, see the 'Notes and Maintenance' section on the first page of this installation manual.





INSTALLATION MANUAL

Parts List

1	Driver / left, side bar / running board
1	Passenger / right, side bar / running board
6	VersaTrac™ mounting bracket, universal
2	VersaTrac™ mounting bracket, passenger / right, front, upper
2	VersaTrac™ mounting bracket, passenger / right, front, lower
14	Clip nut, M8*
30	Hex bolt, M8 - 1.25 x 25mm (B)
30	Lock washer, M8 (B)
30	Flat washer, M8 (B)
16	Hex nut, M8 (B)
2	Hex bolt, M10 - 1.50 x 30mm (B)
2	Lock washer, M10
2	Flat washer, M10

(B) = Black hardware

* Depending on the year of the vehicle, clip nuts may or may not be needed.

Tools Required

Ratchet	Socket, 16mm
Torque wrench	Extension
Level	

Torque Specifications

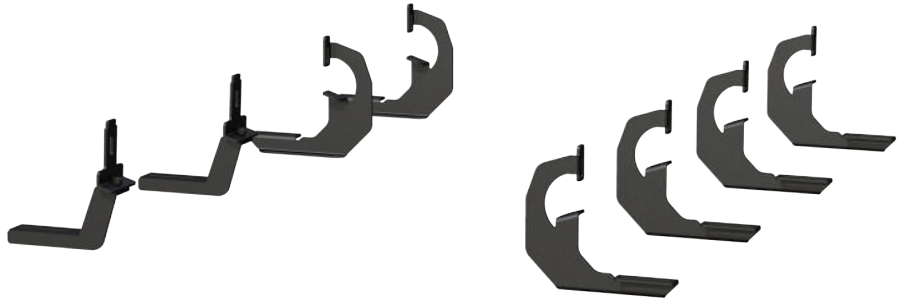
METRIC	Torque Specifications	
	M6 bolt	3 ft.-lbs.
	M8 bolt	7 ft.-lbs.
	M10 bolt	16 ft.-lbs.
SAE	M12 bolt	28 ft.-lbs.
	1/4" bolt	3 ft.-lbs.
	5/16" bolt	7 ft.-lbs.
	3/8" bolt	16 ft.-lbs.
	7/16" bolt	20 ft.-lbs.
	1/2" bolt	28 ft.-lbs.

Use above torque setting unless otherwise noted

Level of Difficulty

Easy

Product Image



AdvantEDGE™



RidgeStep™



Notes and Maintenance

Before you begin installation, read all instructions thoroughly.

Proper tools will improve the quality of installation and reduce the time required.

To protect the product, wax after installing. Regular waxing is recommended to add a protective layer over the finish. Do not use any type of polish or wax that may contain abrasives that could damage the finish.

For polished, gloss and other smooth finishes, polish may be used to clear small scratches and scuffs on the finish.

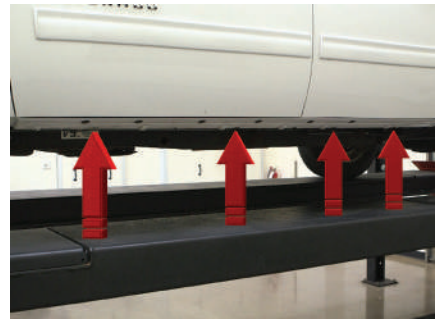
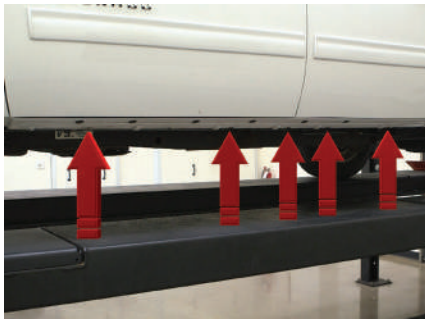
Mild automotive detergent may be used to clean the product. Do not use dish detergent, abrasive cleaners, abrasive pads, wire brushes or other similar products that may damage the finish.

Refer to the table to the left when securing hardware during the installation process to help prevent damage to the product or vehicle.

Step 1

Starting on the driver side, locate the five mounting tabs along the bottom edge of the vehicle body.

This installation will use the first, second, fourth and fifth mounting tabs.



Step 2

Starting at the front driver-side mounting location, locate the threaded hole on the inside of the body panel.

Attach the bracket to the body panel using an M8 hex bolt, lock washer and flat washer.

Snug the hardware, but do not fully tighten.



Step 3

Secure the bracket with a second M8 hex bolt, lock washer and flat washer, using the factory-threaded nut on the edge of the body panel.

Snug the hardware, but do not fully tighten.



Step 4

Repeat steps 2 and 3 to install the second bracket over the second mounting tab location from step 1.



Step 5

Locate the fourth and fifth tab locations from step 1.

Insert a clip nut through the access hole and align it over the adjacent smaller hole. Insert a second clip nut over the lower mounting tab.

Secure the bracket to the vehicle with an M8 hex bolt, lock washer and flat washer in each mounting location.

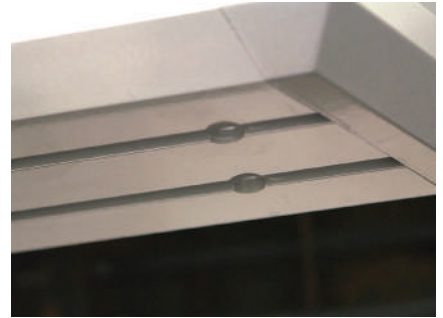


If installing RidgeStep™ running boards, skip to Step 7A

Step 6A - AdvantEDGE™ Side Bars

Carefully place the side bar onto the mounting brackets.

Ensure the outer edge of the side bar is lined up with the outer edge of the mounting brackets.



Step 6B - AdvantEDGE™ Side Bars

Locate the round slots on the base of the side bar.

Insert four M8 hex bolts into each slot.



Step 6C - AdvantEDGE™ Side Bars

Slide the bolts down the rail so that two bolts are positioned for each bracket.

Carefully lift the side bar up and move the bolts as necessary so they are in line with the slots on the mounting brackets.

Secure the side bar to the brackets using flat washers, lock washers and M8 hex nuts.

Snug the hardware, but do not fully tighten. Continue to step 8.



Step 7A - RidgeStep™ Running Boards

Slide the four C-shaped track mounting brackets into the rail slots.



Step 7B - RidgeStep™ Running Boards

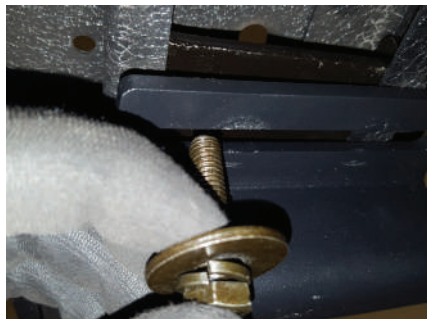
Carefully place the running board onto the mounting brackets.

Align the C-shaped track mounting brackets with the mounting brackets on the vehicle.



Step 7C - RidgeStep™ Running Boards

Attach the C-shaped track mounting brackets to the mounting brackets using M8 hex bolts, lock washers and flat washers.



Step 8

At this time, adjust the side bar / running board to the desired location.

With the side bar / running board in position, it is recommended to tighten all brackets to the vehicle first, followed by the side bar / running board connections.

For recommended torque specifications, refer to the table on page two.



Step 1 - Install the passenger side DEF tank mounting brackets

Locate the front mounting point on the passenger side of the vehicle to install the front two passenger mounting brackets.

Place the upper mounting bracket against the rocker panel. Align the weld nut on the upper mounting bracket with the mounting hole in the rocker panel.

Align one of the passenger front lower mounting brackets with the upper mounting bracket. Secure the two mounting brackets together using an M10 hex bolt, M10 lock washer and M10 flat washer.

Torque all M10 hardware to 31.6 ft-lbs.

Repeat process to install the second passenger mounting bracket. Secure the top mounting bracket to the rocker panel using an M8 hex bolt, M8 lock washer and M8 flat washer.

Snug the hardware, but do not fully tighten.



Step 10

Repeat step 5 on the passenger side of the vehicle to install the two rear mounting brackets.

Repeat steps 6A through 8 on the passenger side of the vehicle to install the side bars / running boards.

Congratulations on the installation of your new ARIES AdvantEDGE™ side bars / RidgeStep™ running boards.

With the side bars / running boards installed, periodic inspections should be performed to ensure all mounting hardware remains tight.

To protect your investment, see the 'Notes and Maintenance' section on the first page of this instruction manual.

