



# INSTALLATION MANUAL

## Parts List

1	Driver / left, side bar / running board
1	Passenger / right, side bar / running board
6	VersaTrac™ mounting bracket, universal
6	Serrated flange nut, M8
12	Hex bolt, M8 (S)
12	Flat washer, M8 (S)
12	Lock washer, M8 (S)
12	Hex bolt, M8 (B)
12	Flat washer, M8 (B)
12	Lock washer, M8 (B)
12	Hex nut, M8 (B)

(S) = Silver hardware

(B) = Black hardware

## Tools Required

Ratchet	Socket, 13mm
Torque wrench	Level
Flathead screwdriver	

## Level of Difficulty

Easy

## Product Image



## AdvantEDGE™



## RidgeStep™



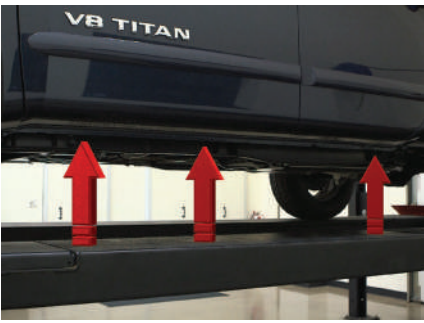
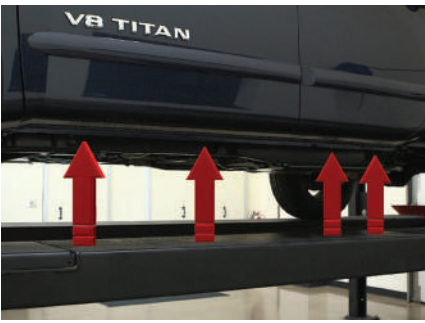
Torque Specifications		
METRIC	M6 bolt	3 ft.-lbs.
	M8 bolt	7 ft.-lbs.
	M10 bolt	16 ft.-lbs.
	M12 bolt	28 ft.-lbs.
SAE	1/4" bolt	3 ft.-lbs.
	5/16" bolt	7 ft.-lbs.
	3/8" bolt	16 ft.-lbs.
	7/16" bolt	20 ft.-lbs.
	1/2" bolt	28 ft.-lbs.

Notes and Maintenance
Before you begin installation, read all instructions thoroughly.
Proper tools will improve the quality of installation and reduce the time required.
For chrome powder coat, polish may be used to clear small scratches and scuffs on the finish. Mild soap may be used also to clean the product.
For black finishes, mild soap may be used to clean the product.
Refer to the table to the left when securing hardware during the installation process to help prevent damage to the product or vehicle.

### Step 1

Starting on the driver side, locate the four mounting tabs along the bottom edge of the vehicle body.

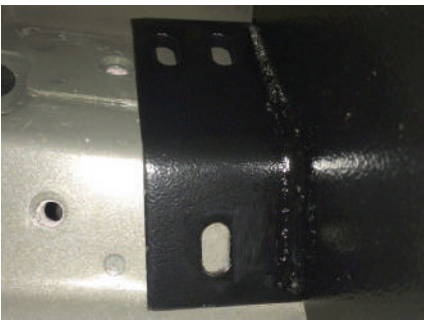
This installation will use the first, second and fourth mounting tabs.



### Step 2

Starting at the front driver-side mounting location, use a flathead screwdriver to remove the plastic plugs, exposing the threaded inserts on the rocker panel.

**Note:** Old-style vehicles may have a combination of threaded inserts and threaded studs. New-style vehicle will have two threaded inserts as shown.



### Step 3

Secure the bracket to the vehicle using an M8 serrated flange nut on the top mounting point and a silver M8 hex bolt, lock washer and flat washer on the lower mounting point.

On newer vehicles with two threaded inserts, install the bracket with two silver M8 hex bolts, lock washers and flat washers.

Snug the hardware, but do not fully tighten.



#### Step 4

Repeat steps 2 and 3 to install the middle and rear mounting brackets.



## If installing RidgeStep™ running boards, skip to Step 6A

#### Step 5A - AdvantEDGE™ Side Bars

Carefully place the side bar onto the mounting brackets.

Ensure the outer edge of the side bar is lined up with the outer edge of the mounting brackets.

Locate the round slots on the base of the side bar. Insert two silver M8 hex bolts into each slot, sliding them towards the front mounting bracket.

Insert an additional black M8 hex bolt into each rail slot by the back tire opening.



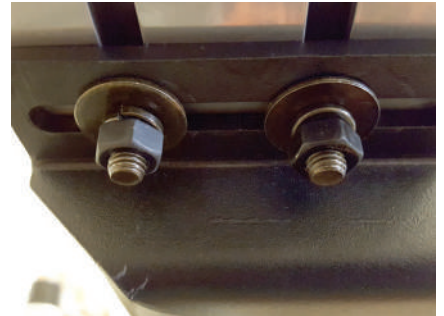
#### Step 5B - AdvantEDGE™ Side Bars

Slide the bolts down the rail so that two bolts are positioned for each bracket.

Carefully lift the side bar up and move the bolts as necessary so they are in line with the slots on the mounting brackets.

Secure the side bar to the brackets using black M8 flat washers, lock washers and hex nuts.

Snug the hardware, but do not fully tighten. Continue to step 7.



#### Step 6A - RidgeStep™ Running Boards

Slide the three C-shaped track mounting brackets into the rail slots.





### Step 6B - RidgeStep™ Running Boards

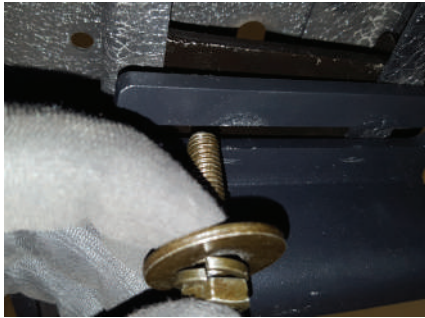
Carefully place the running board onto the mounting brackets.

Align the C-shaped track mounting brackets with the mounting brackets on the vehicle.



### Step 6C - RidgeStep™ Running Boards

Attach the C-shaped track mounting brackets to the mounting brackets using black M8 hex bolts, lock washers and flat washers.



### Step 7

At this time, adjust the side bar / running board to the desired location.

With the side bar / running board in position, it is recommended to tighten all brackets to the vehicle first, followed by the side bar / running board connections.

For recommended torque specifications, refer to the table on page two.



### Step 8

Repeat steps 1 through 7 on the passenger side of the vehicle.

Congratulations on the installation of your new ARIES AdvantEDGE™ side bars / RidgeStep™ running boards.

With the side bars / running boards installed, periodic inspections should be performed to ensure all mounting hardware remains tight.

To protect your investment, see the 'Notes and Maintenance' section on the second page of this instruction manual.





# INSTALLATION MANUAL

## Level of Difficulty

Easy

This is the second of two manuals required to complete this installation. The first manual is included with your mounting brackets.

## Parts List

1 Driver / left  
AscentStep™ running board

1 Passenger / right  
AscentStep™ running board

8 Mounting plate

Attachment hardware is supplied with the mounting brackets. Hardware quantities will vary depending on the vehicle application.

## Tools Required

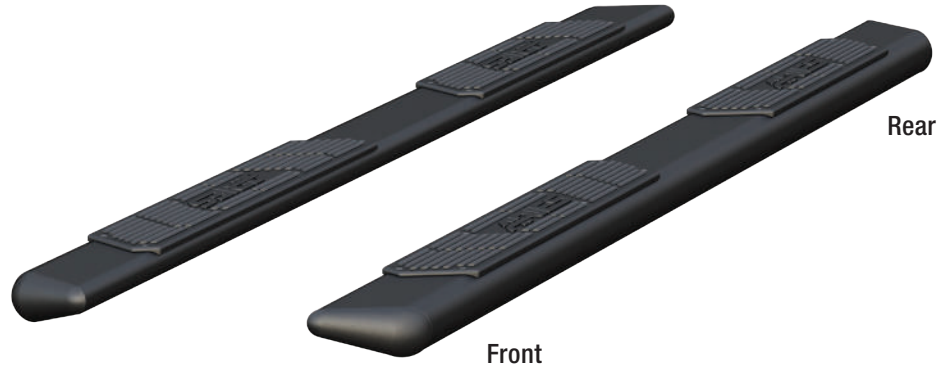
Ratchet set      Torque wrench

## Torque Specifications

	Metric	SAE
	M6 bolt	3 ft-lbs.
	M8 bolt	7 ft-lbs.
	M10 bolt	16 ft-lbs.
	M12 bolt	28 ft-lbs.
	1/4" bolt	3 ft-lbs.
	5/16" bolt	7 ft-lbs.
	3/8" bolt	16 ft-lbs.
	7/16" bolt	20 ft-lbs.
	1/2" bolt	28 ft-lbs.

Use above torque setting unless otherwise noted

## Product Photo



## Notes and Maintenance

Before you begin installation, read all instructions thoroughly.

Proper tools will improve the quality of installation and reduce the time required.

To protect the product, wax after installing. Regular waxing is recommended to add a protective layer over the finish. Do not use any type of polish or wax that may contain abrasives that could damage the finish.

For polished, gloss and other smooth finishes, polish may be used to clear small scratches and scuffs on the finish.

Mild automotive detergent may be used to clean the product. Do not use dish detergent, abrasive cleaners, abrasive pads, wire brushes or other similar products that may damage the finish.

Refer to the table to the left when securing hardware during the installation process to help prevent damage to the product or vehicle.

## Product Registration

CURT Group stands behind our products with industry leading warranties. You can help us continue to improve our product line and help us understand your needs by registering your purchase by visiting:

At CURT Group, customer is king. We value your feedback and we use that information to make improvements on our products. Please, take a minute and let us know how we are doing.

### Step 1

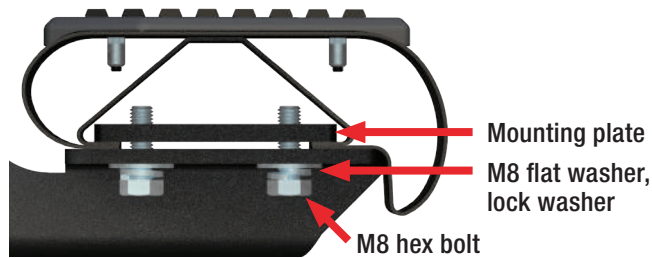
Place the mounting plates into the track on the running board.

Carefully place the running board onto the mounting brackets.

Slide the mounting plates along the track to align with the mounting brackets on the vehicle.

Secure the running board to the mounting brackets using two M8 hex bolts, two lock washers and two flat washers.

**Note:** The number of mounting brackets may vary based on application. Use one mounting plate per bracket.



### Step 2

At this time, adjust the running board to the desired location.

With the running board in position, it is recommended to tighten all brackets to the vehicle first, followed by the running board connections.

For recommended torque specifications, refer to the table on page 1.

### Step 3

Repeat all steps for the passenger side of the vehicle.

Congratulations on the installation of your new ARIES AscentStep™ running boards.

With the running boards installed, periodic inspections should be performed to ensure all mounting hardware remains tight.

To protect your investment, see the 'Notes and Maintenance' section on the first page of this installation manual.



Rely only on high-grade running boards and step bars offered on our virtual shelves.