

INSTALLATION MANUAL

2055122

Level of Difficulty

Easy

This is the first of two manuals required to complete this installation. The second manual is included with your running boards / side steps.

Parts List

4	VersaTrac™ mounting bracket, universal
12	Flat washer, M8 (S)
12	Lock nut, M8 (S)
8	Hex bolt, M8 (B)
8	Flat washer, M8 (B)
8	Lock washer, M8 (B)
8	Hex nut, M8 (B)
8	Nylon flat washer, M8

(S) = Silver hardware, (B) = Black hardware

Running boards / side steps sold separately

Tools Required

Ratchet	Socket set
Torque wrench	Socket extension
Level	--

Torque Specifications

	Metric		
	M6 bolt	3 ft-lbs.	
M8 bolt	7 ft-lbs.		
M10 bolt	16 ft-lbs.		
M12 bolt	28 ft-lbs.		
SAE	1/4" bolt	3 ft-lbs.	
	5/16" bolt	7 ft-lbs.	
	3/8" bolt	16 ft-lbs.	
	7/16" bolt	20 ft-lbs.	
	1/2" bolt	28 ft-lbs.	

Use above torque setting unless otherwise noted

Product Photo



Notes and Maintenance

Before you begin installation, read all instructions thoroughly.

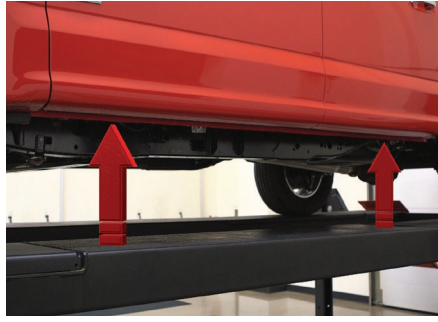
Proper tools will improve the quality of installation and reduce the time required.

Mild automotive detergent may be used to clean the product. Do not use dish detergent, abrasive cleaners, abrasive pads, wire brushes or other similar products that may damage the finish.

Refer to the table to the left when securing hardware during the installation process to help prevent damage to the product or vehicle.

Step 1

Starting on the driver side, locate the two mounting tabs along the bottom edge of the vehicle body.



Step 2

Starting at the front driver-side mounting location, locate the three threaded bolts on the inside of the body panel.

Before attaching the bracket, place a nylon flat washer on each of the threaded bolts to prevent any galvanic corrosion.

Attach the bracket to the body panel using a silver M8 flat washer and lock nut.

Snug the hardware, but do not fully tighten.



Step 3

Repeat step 2 to install the second bracket over the rear mounting tab location from step 1.

Repeat steps 1 through 3 on the passenger side of the vehicle.

Note: To complete the installation, refer to the manual included with your running boards / side steps.



INSTALLATION MANUAL

2055853

Level of Difficulty

Easy

This is the second of two manuals required to complete this installation. The first manual is included with your mounting brackets.

Parts List

- | | |
|---|--|
| 1 | Driver / left AdvantEDGE™ side bar |
| 1 | Passenger / right AdvantEDGE™ side bar |

Attachment hardware is supplied with the mounting brackets. Hardware quantities will vary depending on the vehicle application.

Tools Required

- | | |
|-------------|---------------|
| Ratchet set | Torque wrench |
|-------------|---------------|

Torque Specifications

	Metric	SAE	
	M6 bolt		3 ft-lbs.
	M8 bolt		7 ft-lbs.
	M10 bolt		16 ft-lbs.
	M12 bolt		28 ft-lbs.
	1/4" bolt		3 ft-lbs.
	5/16" bolt		7 ft-lbs.
	3/8" bolt		16 ft-lbs.
	7/16" bolt		20 ft-lbs.
	1/2" bolt		28 ft-lbs.

Use above torque setting unless otherwise noted

Product Photo



Notes and Maintenance

Before you begin installation, read all instructions thoroughly.

Proper tools will improve the quality of installation and reduce the time required.

To protect the product, wax after installing. Regular waxing is recommended to add a protective layer over the finish. Do not use any type of polish or wax that may contain abrasives that could damage the finish.

For polished, gloss and other smooth finishes, polish may be used to clear small scratches and scuffs on the finish.

Mild automotive detergent may be used to clean the product. Do not use dish detergent, abrasive cleaners, abrasive pads, wire brushes or other similar products that may damage the finish.

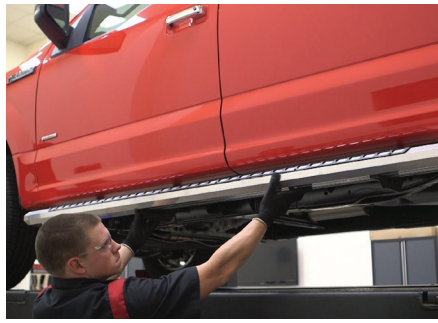
Refer to the table to the left when securing hardware during the installation process to help prevent damage to the product or vehicle.

Step 1

Carefully place the side bar onto the mounting brackets. Ensure the outer edge of the side bar is lined up with the outer edge of the mounting brackets.

Locate the round slots on the bottom of the side bar. Insert a black M8 hex bolt into each slot and slide the pair of bolts to the front mounting bracket.

Repeat until two hex bolts are positioned for each mounting bracket. **Note:** The number of mounting brackets may vary based on application.

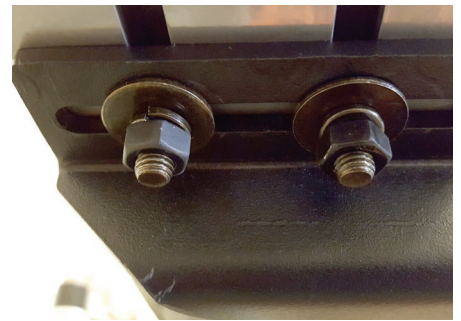
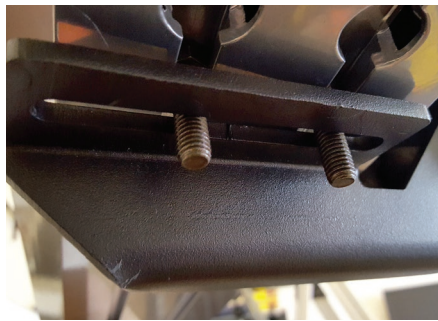


Step 2

Carefully lift the side bar up and adjust the bolts as necessary until they are in line with the slots on the mounting brackets.

Secure the side bar to the brackets using two black flat washers, lock washers and M8 hex nuts per mounting bracket.

Snug the hardware, but do not fully tighten.



Step 3

At this time, adjust the side bar to the desired location.

With the side bar in position, it is recommended to tighten all brackets to the vehicle first, followed by the side bar connections.

For recommended torque specifications, refer to the table on page 1.



Step 4

Repeat all steps for the passenger side of the vehicle.

Congratulations on the installation of your new ARIES AdvantEDGE™ side bars.

With the side bars installed, periodic inspections should be performed to ensure all mounting hardware remains tight.

To protect your investment, see the 'Notes and Maintenance' section on the first page of this installation manual.



Representative Image