

INSTALLATION MANUAL

2500350

Level of Difficulty

Moderate

Parts List

1	Driver / left inner fender liner
1	Passenger / right inner fender liner
4	Handle nut, M6
1	Thread-set bolt, M6
1	Thread-set washer
1	Thread-set spacer
16	Hex bolt, M6 x 25mm
16	Flat washer, M6
16	Lock washer, M6
18	Rivet nut, M6
1	Left hand-nut, M8

Tools Required

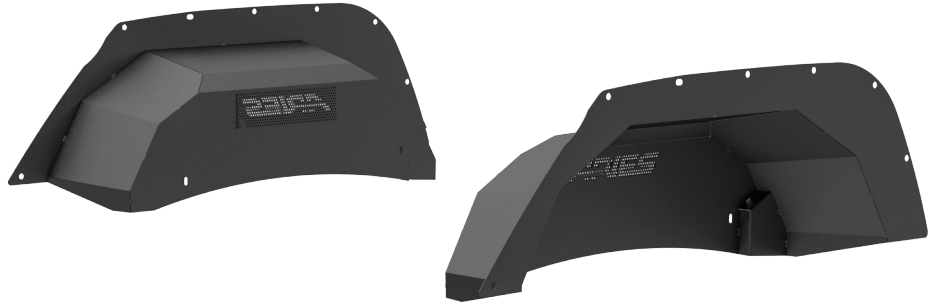
Ratchet	Trim removal tool
Wrench, 13mm	Drill
Socket, 10mm	Socket, 13mm
Drill bit, 25/64" or 10mm	Paint marker

Torque Specifications

Metric	M6 bolt	3 ft-lbs.
	M8 bolt	7 ft-lbs.
	M10 bolt	16 ft-lbs.
	M12 bolt	28 ft-lbs.
SAE	1/4" bolt	3 ft-lbs.
	5/16" bolt	7 ft-lbs.
	3/8" bolt	16 ft-lbs.
	7/16" bolt	20 ft-lbs.
	1/2" bolt	28 ft-lbs.

Use above torque setting unless otherwise noted

Product Photo



Notes and Maintenance

Before you begin installation, read all instructions thoroughly.

Proper tools will improve the quality of installation and reduce the time required.

To protect the product, wax after installing. Regular waxing is recommended to add a protective layer over the finish. Do not use any type of polish or wax that may contain abrasives that could damage the finish.

For polished, gloss and other smooth finishes, polish may be used to clear small scratches and scuffs on the finish.

Mild automotive detergent may be used to clean the product. Do not use dish detergent, abrasive cleaners, abrasive pads, wire brushes or other similar products that may damage the finish.

Refer to the table to the left when securing hardware during the installation process to help prevent damage to the product or vehicle.

Product Registration

CURT Group stands behind our products with industry leading warranties.

You can help us continue to improve our product line and help us understand your needs by registering your purchase by visiting:

warranty.curtgroup.com/surveys

At CURT Group, customer is king. We value your feedback and we use that information to make improvements on our products. Please, take a minute and let us know how we are doing.

Step 1

Remove all push-in retainers securing the rear factory flares. Set the flares aside.

Using a 10mm socket, remove all the hex head bolts on the factory inner fender liner. Set the liner aside.



Step 2

Hold the new inner fender liner and fender flare up to the vehicle to check for hole alignment with the factory holes. Mark any new holes needed using a paint marker.



Step 3

Remove the fender flare and inner fender liner and drill 25/64" or 10mm holes to fit the M6 threaded metal inserts supplied with the fender flares.

Do not make the holes larger than required or the rivet nuts may fail to install.

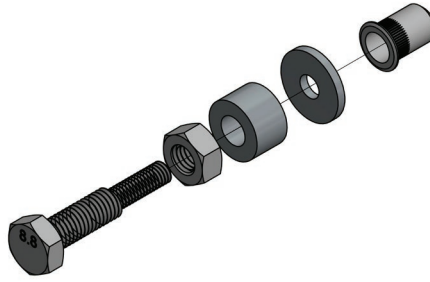
Note: If installing fender flares and inner fender liners at the same time, you will have extra hardware remaining.



Step 4

Screw the left hand-nut completely onto the thread-set tool. Slide the thread-set spacer onto the larger thread until it rests against the M8 left hand-nut.

Place an M6 flat washer on the small thread followed by an M6 rivet nut. Thread the rivet nut onto the small end of the tool until it seats the washer against the shoulder between the M6 and M8 threads.



Step 5

Insert the rivet nut into the drilled hole.

Using a 13mm wrench, hold the M8 nut on the thread-set tool. With a 13mm socket, turn the head of the bolt clockwise until the M8 nut and thread-set spacer contact the M6 washer and rivet nut. After tension is felt, carefully compress the rivet nut in the hole while applying slight pressure to keep it seated (approximately two full rotations).

CAUTION: Over tightening the rivet nut may damage the thread-set tool and / or vehicle panel. Only compress the rivet nut enough to seat it in the hole without rotating.



Step 6

With assistance, hold the inner fender liner in place and fasten the back of the inner fender liner to the vehicle using two M6 bolts, two M6 flat washers, two M6 lock washers and two handle nuts.

Snug the hardware, but do not fully tighten.



Step 7

Place the fender flare on top of the inner fender liner and fasten in place with six M6 bolts, six M6 lock washers and six M6 flat washers.

Secure the two remaining mounting points with the removed fender flare hardware.



Step 8

Once all fasteners are started, ensure all handle nuts do not contact the brake lines or the fuel fill tube.

Tighten all fasteners and repeat the entire process on the passenger side.



Step 9

Congratulations on the installation of your new ARIES inner fender liners.

With the inner fender liners installed, periodic inspections should be performed to ensure all mounting hardware remains tight.

To protect your investment, see the 'Notes and Maintenance' section on the first page of this instruction manual.

