



# INSTALLATION MANUAL

2156002

## Level of Difficulty

Moderate

## Parts List

1	TrailCrusher™ bumper
8	Flat washer, M12
8	Lock washer, M12
8	Hex nut, M12
8	Backup washer

## Tools Required

Ratchet	Philips screwdriver
Socket set	Flathead screwdriver
Allen wrench	Level

## Torque Specifications

M12 bolt	70 ft-lbs.
----------	------------

Use above torque setting unless otherwise noted

## Product Photo



## Notes and Maintenance

Before you begin installation, read all instructions thoroughly.

Proper tools will improve the quality of installation and reduce the time required.

To protect the product, wax after installing. Regular waxing is recommended to add a protective layer over the finish. Do not use any type of polish or wax that may contain abrasives that could damage the finish.

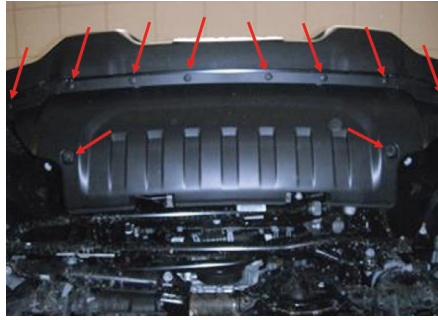
For polished, gloss and other smooth finishes, polish may be used to clear small scratches and scuffs on the finish.

Mild automotive detergent may be used to clean the product. Do not use dish detergent, abrasive cleaners, abrasive pads, wire brushes or other similar products that may damage the finish.

Refer to the table to the left when securing hardware during the installation process to help prevent damage to the product or vehicle.

### Step 1

Remove the front fascia by removing the eight plastic push fasteners from the upper edge of the lower front fascia. Using a socket, remove the two 5mm screws securing the lower edge of the plastic fascia.



### Step 2

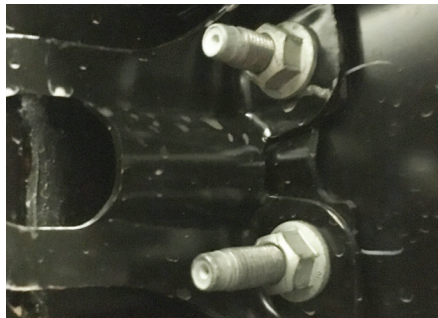
From behind the factory bumper on the passenger side, disconnect the fog light wiring harness.



### Step 3

Remove the four nuts on the driver side securing the factory bumper in place.

Repeat this step on the passenger side.



### Step 4

Once all of the bolts have been removed, carefully lift the factory bumper from the frame and set it on a flat work surface.

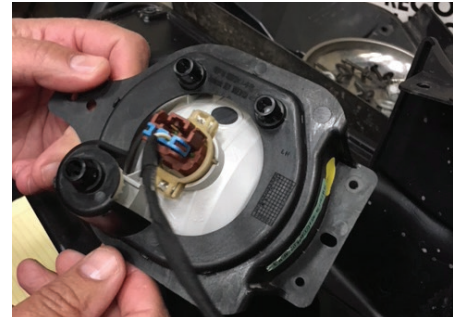
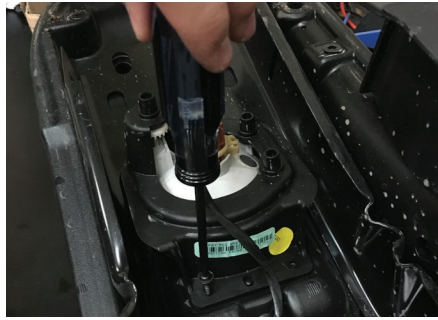


## Step 5

On the driver side, remove the plastic cover over the factory fog light. Remove the fog light and plastic housing from the factory bumper.

Disconnect the wiring harness from the fog light. Remove the factory fog light from the plastic housing.

Repeat this step on the passenger side.

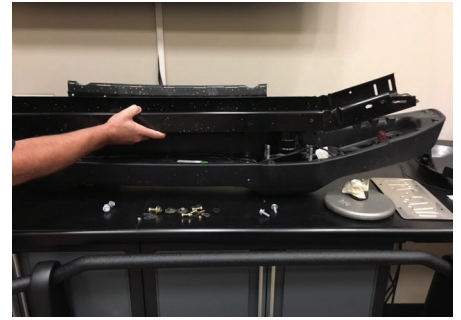


## Step 6

Begin removing the fog light wiring harness from the factory bumper by removing the retainer clips from the eight bumper mounting studs.

Remove the four bolts securing the beam to the bumper. Lift the beam from the bumper to expose the fog light harness.

Remove the plastic push fasteners securing the wiring harness to the bumper. The harness will be used with the new bumper.



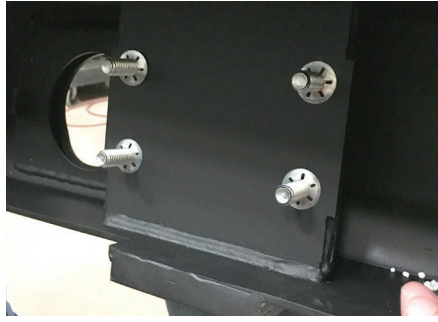
## Step 7

Install the factory fog lights into the new bumper. Be sure to fully engage the plastic push fasteners on the factory fog light into the mounting holes of the bumper.



### Step 8

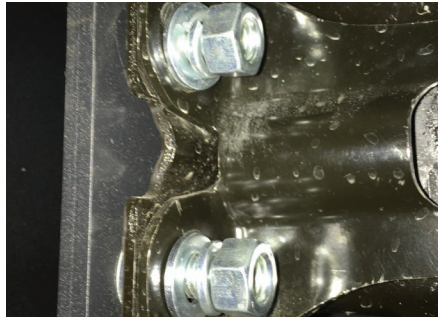
The bumper includes pre-installed M12 bolts. With help, lift the bumper into place over the factory mounting locations.



### Step 9

Secure the bumper using one M12 flat washer, lock washer and hex nut on each of the eight mounting locations.

Snug the hardware, but do not fully tighten.



### Step 10

Connect the fog light harness to the fog lights in the bumper.

From behind the bumper on the passenger side, reconnect the fog light wiring harness.



### Step 11

If a winch is being installed on the bumper, use the provided backup washers in conjunction with the mounting hardware supplied with the winch.



### Step 12

Level and adjust the bumper to the desired position and tighten all hardware to the recommended torque specifications listed in the table on the first page.

Congratulations on the installation of your new ARIES TrailCrusher™ Jeep bumper.

With the bumper installed, periodic inspections should be performed to ensure all mounting hardware remains tight.

To protect your investment, see the 'Notes and Maintenance' section on the first page of this instruction manual.

