

INSTALLATION MANUAL

2074119

Level of Difficulty

Easy

Parts List

1	Driver / left Rocker Step
1	Passenger / right Rocker Step
1	Driver / left front support bracket
1	Passenger / right front support bracket
1	Driver / left rear support bracket
1	Passenger / right rear support bracket
8	Hex bolt, M6 – 25 x 1.0mm
8	Nylock nut, M6
16	Flat washer, M6
4	Hex bolt, M8 – 35 x 1.25mm
4	Lock washer, M8
4	Flat washer, M8
4	Hex nut, M10
4	Hex bolt, M10 – 30 x 1.5mm
8	Flat washer, M10

Tools Required

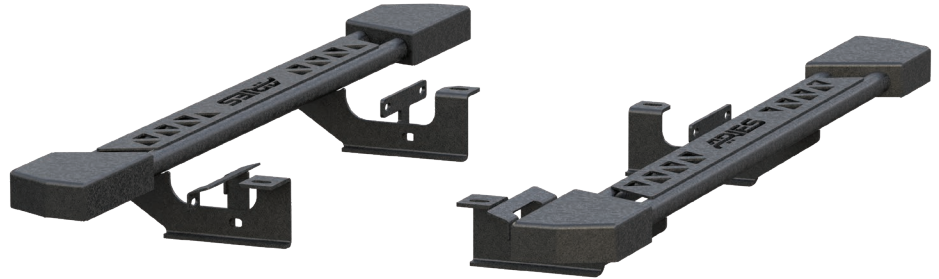
Socket set	Wrench
Socket extension	--

Torque Specifications

Metric	M6 bolt	3 ft-lbs.
	M8 bolt	7 ft-lbs.
	M10 bolt	16 ft-lbs.
	M12 bolt	28 ft-lbs.
SAE	1/4" bolt	3 ft-lbs.
	5/16" bolt	7 ft-lbs.
	3/8" bolt	16 ft-lbs.
	7/16" bolt	20 ft-lbs.
	1/2" bolt	28 ft-lbs.

Use above torque setting unless otherwise noted

Product Photo



Notes and Maintenance

Before you begin installation, read all instructions thoroughly.

Proper tools will improve the quality of installation and reduce the time required.

To protect the product, wax after installing. Regular waxing is recommended to add a protective layer over the finish. Do not use any type of polish or wax that may contain abrasives that could damage the finish.

For polished, gloss and other smooth finishes, polish may be used to clear small scratches and scuffs on the finish.

Mild automotive detergent may be used to clean the product. Do not use dish detergent, abrasive cleaners, abrasive pads, wire brushes or other similar products that may damage the finish.

Refer to the table to the left when securing hardware during the installation process to help prevent damage to the product or vehicle.

Step 1

Locate the two mounting locations along the bottom edge of the vehicle body.



Step 2

Starting at the driver-side front mounting location, locate the factory threaded hole on the vehicle frame.



Step 3

With assistance, lift the Rocker Step into position and align the brackets on the Rocker Step with the mounting locations on the vehicle.

Secure the front Rocker Step to the vehicle with an M8 hex bolt, lock washer and flat washer using the factory threaded hole.

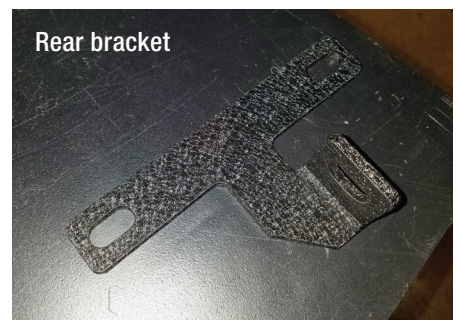
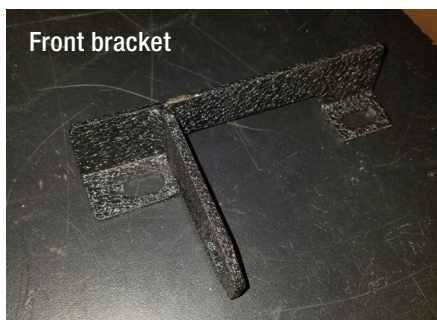
Repeat for the rear mounting location.



Step 4

Attach each support bracket to the Rocker Steps using an M10 hex bolt, two flat washers and a nylock nut.

Snug the hardware, but do not fully tighten.



Step 5

Secure the front Rocker Step support brackets to the vehicle using two M6 hex bolts and flat washers on the outside and two flat washers and nylock nuts on the inside.



Step 6

Repeat step 5 for the rear attachment points.

With the Rockers Steps in position, it is recommended to tighten all brackets to the vehicle first, followed by the Rocker Step connections.



Step 7

Repeat steps 1 through 6 on the passenger side of the vehicle.

Congratulations on the installation of your new ARIES Rocker Steps.

With the Rocker Steps installed, periodic inspections should be performed to ensure all mounting hardware remains tight.

To protect your investment, see the 'Notes and Maintenance' section on the first page of this instruction manual.

