

## Parts List

1	Driver / left running board
1	Passenger / right running board
2	Mounting bracket, front
2	Mounting bracket, middle
2	Mounting bracket, rear
2	Hanger bracket, front
2	Hanger bracket, middle
2	Hanger bracket, rear
6	Hex bolt, M8
6	Flat washer, M8
6	Lock washer, M8
6	Handle nut, M8
6	Hex bolt, M10
12	Flat washer, M10
6	Lock washer, M10
6	Hex nut, M10
2	T-bolt, M12
2	Flat washer, M12
2	Lock washer, M12
2	Hex nut, M12
2	Plastic bolt retainer, M12

## Additional Hardware\*

12	Hex bolt, M8
12	Flat washer, M8
12	Lock washer, M8
12	Hex nut, M8

\* Running boards are supplied with additional hardware. Quantities listed are in addition to the standard supplied hardware.

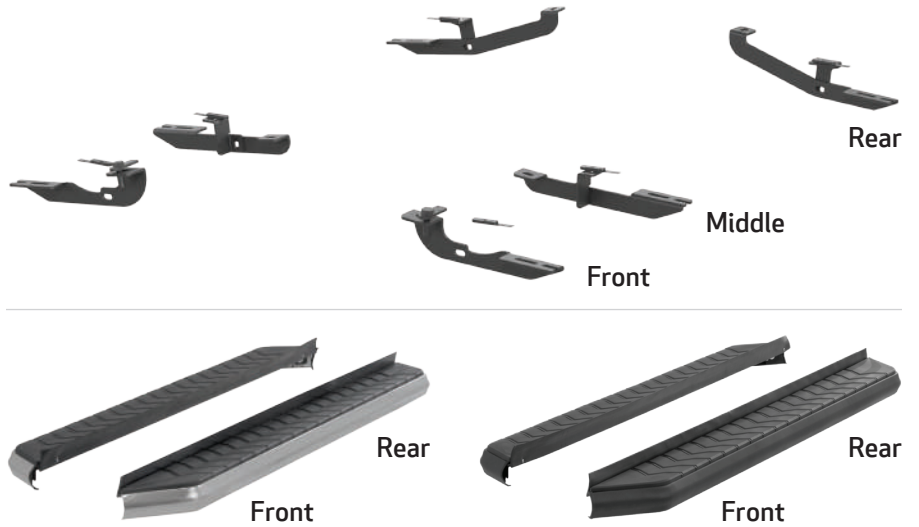
## Tools Required

Ratchet	Socket, 10mm
Torque wrench	Socket, 13mm
Flathead screwdriver	Socket, 17mm
Wrench, 17mm	Socket, 18mm

## Level of Difficulty

Easy

## Product Image



## Notes and Maintenance

Before you begin installation, read all instructions thoroughly.

Proper tools will improve the quality of installation and reduce the time required.

To protect the product, wax after installing. Regular waxing is recommended to add a protective layer over the finish. Do not use any type of polish or wax that may contain abrasives that could damage the finish.

For polished, gloss and other smooth finishes, polish may be used to clear small scratches and scuffs on the finish.

Mild automotive detergent may be used to clean the product. Do not use dish detergent, abrasive cleaners, abrasive pads, wire brushes or other similar products that may damage the finish.

Refer to the table to the left when securing hardware during the installation process to help prevent damage to the product or vehicle.

## Torque Specifications

METRIC		SAE	
M6 bolt	3 ft.-lbs.	1/4" bolt	3 ft.-lbs.
M8 bolt	7 ft.-lbs.	5/16" bolt	7 ft.-lbs.
M12 bolt	16 ft.-lbs.	3/8" bolt	16 ft.-lbs.
M12 bolt	28 ft.-lbs.	7/16" bolt	20 ft.-lbs.
--	--	1/2" bolt	28 ft.-lbs.

Use above torque setting unless otherwise noted

### Step 1

Starting on the driver side, locate the three mounting locations underneath the vehicle.

**Note:** Each bracket is specific to a mounting location and is stamped accordingly.



### Step 2

Locate the fasteners along the side of the vehicle and rocker panel and remove them.



### Step 3

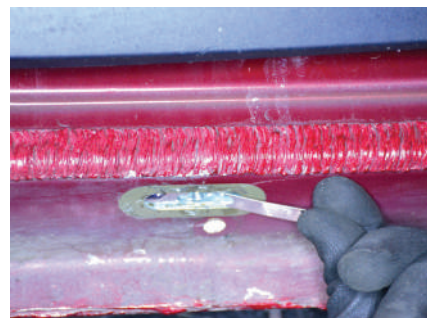
Remove the factory hex bolts on the front and rear end of the rocker panel.

Remove the plastic trim along the edge of the vehicle.



### Step 4

Locate the front hanger bracket mounting point and remove the tape plug. Insert an M8 handle nut into the opening.



### Step 5

Place the front hanger bracket onto the vehicle and secure with an M8 flat washer, M8 lock washer and M8 hex bolt.

Snug the hardware, but do not fully tighten.

Repeat this process to install the middle and rear hanger brackets.

With the hanger brackets installed, reinstall the plastic trim.



### Step 6

Remove the factory nut. Place the front mounting bracket onto the vehicle and secure with the removed factory hardware.

Secure the front mounting bracket to the hanger bracket by inserting an M10 hex bolt and an M10 flat washer through the outside of the hanger bracket and securing with an M10 flat washer, M10 lock washer and M10 hex nut on the inside of the bracket.

Snug the hardware, but do not fully tighten.



### Step 7

Locate the middle mounting point and remove the factory hex bolt.

Place the middle driver-side bracket onto the vehicle and secure with the previously removed factory hex bolt.

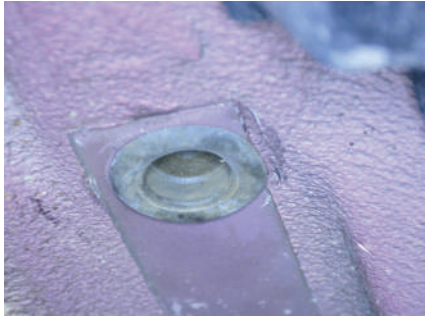
Secure the middle mounting bracket to the hanger bracket by inserting an M10 hex bolt and an M10 flat washer through the outside of the hanger bracket and securing with an M10 flat washer, M10 lock washer and M10 hex nut on the inside of the bracket.

Snug the hardware, but do not fully tighten.



### Step 8

Locate and remove the rear hole plug. Insert an M12 T-bolt plate into the opening. Slide a plastic bolt retainer over the thread of the bolt to hold the bolt in place.



### Step 9

Place the rear driver-side bracket onto the vehicle and secure with an M12 flat washer, M12 lock washer and M12 hex nut.

Secure the rear mounting bracket to the hanger bracket by inserting an M10 hex bolt and an M10 flat washer through the outside of the hanger bracket and securing with an M10 flat washer, M10 lock washer and M10 hex nut on the inside of the bracket.



Snug the hardware, but do not fully tighten.

### Step 10

Remove the M8 nuts, M8 lock washers and M8 flat washers from the running board.

Place the running board onto the brackets and align the M8 bolts with the slots in the brackets on the vehicle.



### Step 11

Attach the running board to the brackets using six M8 bolts, lock washers, flat washers and nuts.

Snug the hardware, but do not fully tighten.



### Step 12

Adjust and level the running board, centering it between the front and rear wheel wells.

With the running board in position, it is recommended to tighten all brackets to the vehicle first, followed by the running board connections.



### Step 13

Repeat steps 1 through 12 on the passenger side of the vehicle.

Congratulations on the installation of your new ARIES AeroTread™ running boards.

With the running boards installed, periodic inspections should be performed to ensure all mounting hardware remains tight.

To protect your investment, see the 'Notes and Maintenance' section on the first page of this instruction manual.

