

### Parts List

1	Driver / left side running board*
1	Passenger / right side running board*
2	Mounting bracket, front
4	Mounting bracket, middle / rear
12	Hex bolt, M8 - 1.25 x 30mm
12	Flat washer, M8
12	Lock washer, M8

\* Running boards sold separately.

### Tools Required

Torque wrench	Socket, 12mm
Extension	Socket, 13mm

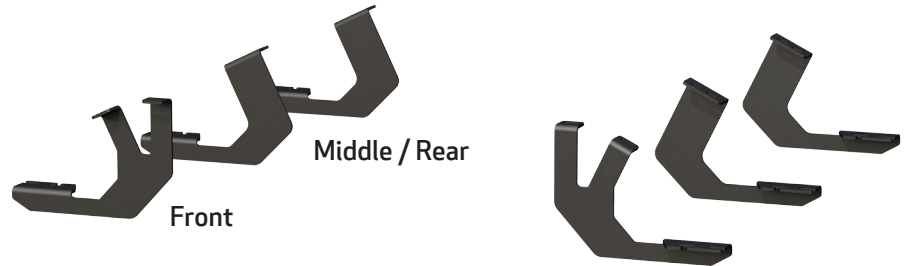
### Torque Specifications

	Torque Specifications	
<b>METRIC</b>	M6 bolt	3 ft.-lbs.
	M8 bolt	7 ft.-lbs.
	M10 bolt	16 ft.-lbs.
	M12 bolt	28 ft.-lbs.
<b>SAE</b>	1/4" bolt	3 ft.-lbs.
	5/16" bolt	7 ft.-lbs.
	3/8" bolt	16 ft.-lbs.
	7/16" bolt	20 ft.-lbs.
	1/2" bolt	28 ft.-lbs.

### Level of Difficulty

Easy

### Product Image



AeroTread™



### Notes and Maintenance

This package includes brackets only. Running boards sold separately.

Before you begin installation, read all instructions thoroughly.

Proper tools will improve the quality of installation and reduce the time required.

For stainless steel and aluminum, polish may be used to clear small scratches and scuffs on the finish. Mild soap may be used also to clean the product.

For black finishes, mild soap may be used to clean the product.

## Step 1

Starting on the passenger side, locate the three mounting tabs along the bottom edge of the vehicle.



## Step 2

Starting at the front passenger-side mounting location, remove the factory mounting hex bolts.

Position the front mounting bracket between the vehicle and cladding mounting bracket.

Secure the front mounting bracket using the previously removed factory hex bolts.

**Note:** If there are no factory hex bolts, use the provided M8 hex bolts, M8 lock washers and M8 flat washers to secure each mounting bracket.



## Step 3

Repeat step 2 when installing the middle and rear mounting brackets.

Snug the hardware, but do not fully tighten.



## Step 4

Remove the M8 hex nuts, M8 lock washers and M8 flat washers from the running board.

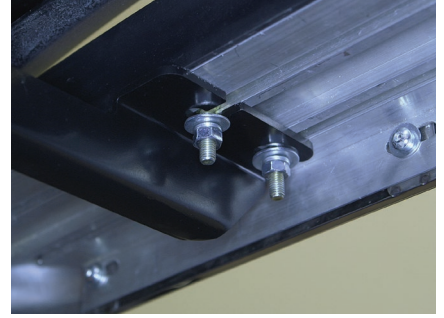
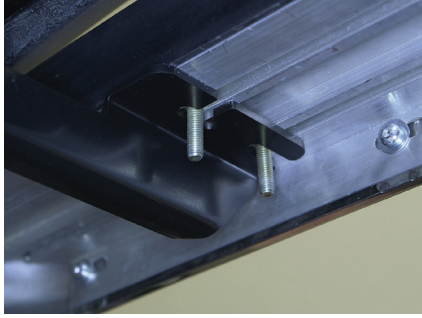
Place the running board onto the brackets and align the M8 bolts with the slots in the brackets on the vehicle. (Running boards are not included.)



### Step 5

Attach the running board to the brackets using the six M8 bolts, lock washers, flat washers and hex nuts. (Running boards are not included.)

Snug the hardware, but do not fully tighten.



### Step 6

Adjust and level the running board, centering it between the front and rear wheel wells.

With the running board in position, it is recommended to tighten all brackets to the vehicle first, followed by the running board connections.



### Step 7

Repeat steps 1 through 6 on the driver side of the vehicle.

Congratulations on the installation of your new ARIES AeroTread™ running boards.

With the running boards installed, periodic inspections should be performed to ensure all mounting hardware remains tight.

To protect your investment, see the 'Notes and Maintenance' section on the first page of this instruction manual.

