

Parts List

| | |
|----|---------------------------------|
| 1 | Driver / left running board |
| 1 | Passenger / right running board |
| 2 | Mounting bracket, front |
| 2 | Mounting bracket, middle |
| 2 | Mounting bracket, rear |
| 6 | L-shaped hanger bracket |
| 8 | T-bolt, M8 |
| 8 | Flat washer, M8 |
| 8 | Lock washer, M8 |
| 8 | Hex nut, M8 |
| 8 | Bolt retainer, plastic, M8 |
| 4 | T-bolt, M10 |
| 6 | Hex bolt, M10 |
| 10 | Flat washer, M10 |
| 10 | Lock washer, M10 |
| 10 | Hex nut, M10 |
| 4 | Bolt retainer, plastic, M10 |

Additional Hardware*

| | |
|----|-----------------|
| 12 | Hex bolt, M8 |
| 12 | Flat washer, M8 |
| 12 | Lock washer, M8 |
| 12 | Hex nut, M8 |

* Running boards are supplied with additional hardware. Quantities listed are in addition to the standard supplied hardware.

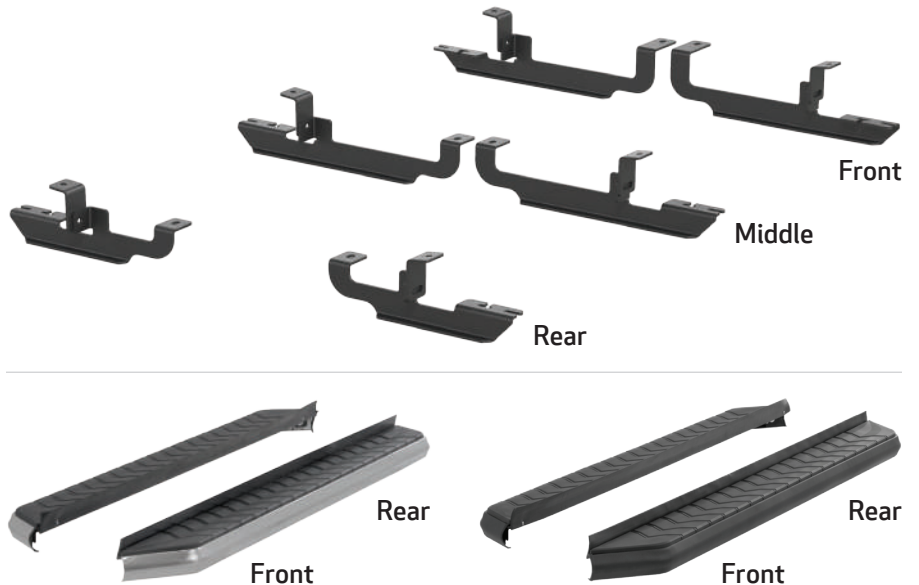
Tools Required

| | |
|---------------|---------------|
| Ratchet | Socket, 13mm |
| Torque wrench | Socket, 17mm |
| Level | Utility knife |
| Wrench, 17mm | Paint marker |

Level of Difficulty

Easy

Product Image



Notes and Maintenance

Before you begin installation, read all instructions thoroughly.

Proper tools will improve the quality of installation and reduce the time required.

For stainless steel, polish may be used to clear small scratches and scuffs on the finish. Mild soap may be used also to clean the product.

For black finishes, mild soap may be used to clean the product.

Refer to the table below when securing hardware during the installation process to help prevent damage to the product or vehicle.

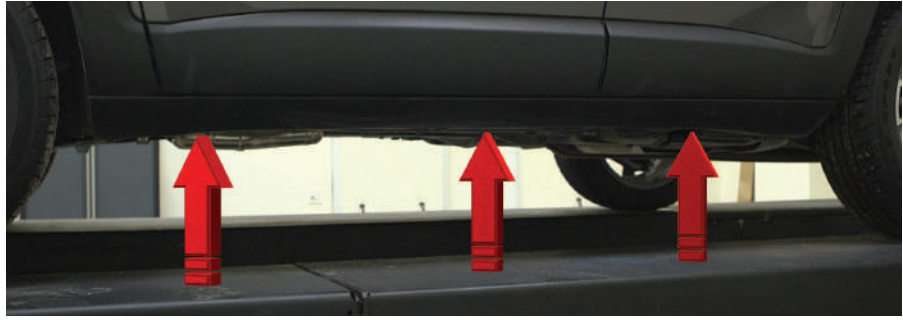
Torque Specifications

| METRIC | | SAE | |
|----------|-------------|------------|-------------|
| M6 bolt | 3 ft.-lbs. | 1/4" bolt | 3 ft.-lbs. |
| M8 bolt | 7 ft.-lbs. | 5/16" bolt | 7 ft.-lbs. |
| M10 bolt | 16 ft.-lbs. | 3/8" bolt | 16 ft.-lbs. |
| M12 bolt | 28 ft.-lbs. | 7/16" bolt | 20 ft.-lbs. |
| -- | -- | 1/2" bolt | 28 ft.-lbs. |

Step 1

Starting on the driver side, locate the three mounting locations underneath the vehicle.

Note: Each bracket is specific to a mounting location. Reference page 1 product image for correct locations.



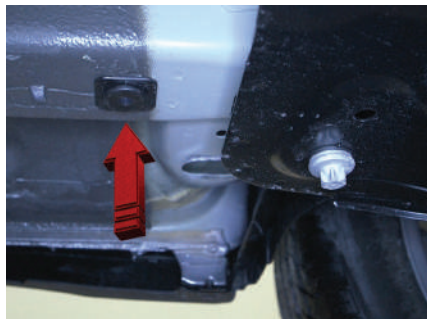
Step 2

Remove the six push-pins to allow for easy access to the rocker panel mounting locations.



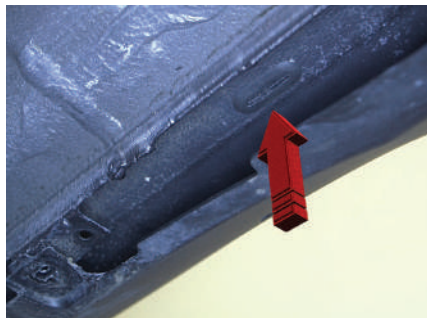
Step 3

Locate the driver-side front mounting tab and remove the rear hole plug. Insert an M10 T-bolt plate into the opening. Slide a plastic bolt retainer over the thread of the bolt to hold the bolt in place.



Step 4

Locate and remove the hole plug in the rocker panel. Insert an M8 T-bolt plate into the opening. Slide a plastic bolt retainer over the thread of the bolt to hold the bolt in place.



Step 5

Place an L-shaped hanger bracket onto the vehicle and secure with an M8 flat washer, M8 lock washer and M8 hex nut.

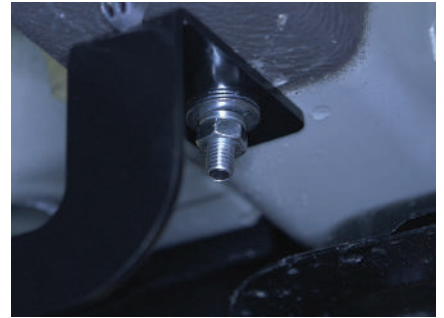
Snug the hardware, but do not fully tighten.



Step 6

Place the front mounting bracket onto the vehicle and secure with an M10 flat washer, M10 lock washer and M10 hex nut.

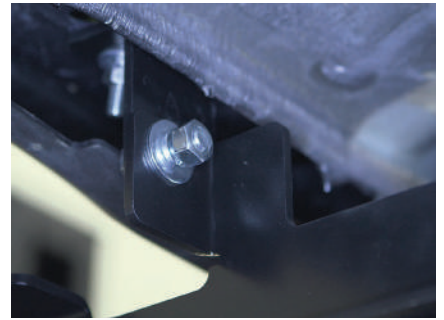
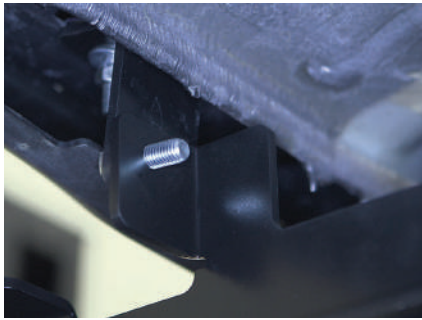
Snug the hardware, but do not fully tighten.



Step 7

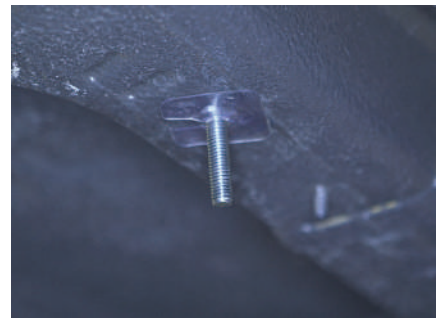
Finish securing the front mounting bracket to the L-shaped hanger bracket by inserting a M10 hex bolt through the remaining mounting hole on the support bracket and feed it through the slot on the L-shaped bracket. Secure with an M10 flat washer, M10 lock washer and M10 hex nut.

Snug the hardware, but do not fully tighten.



Step 8

Locate the driver-side middle mounting tab and remove the hole plug. Insert an M8 T-bolt plate into the opening. Slide a plastic bolt retainer over the thread of the bolt to hold the bolt in place.



Step 9

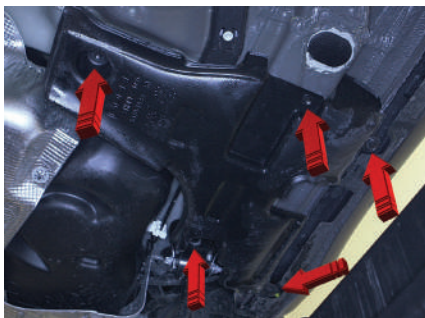
Locate and remove the hole plug in the rocker panel. Insert an M8 T-bolt plate into the opening. Slide a plastic bolt retainer over the thread of the bolt to hold the bolt in place.

Repeat steps 5 through 7 to install the L-shaped hanger bracket and middle mounting bracket.



Step 10

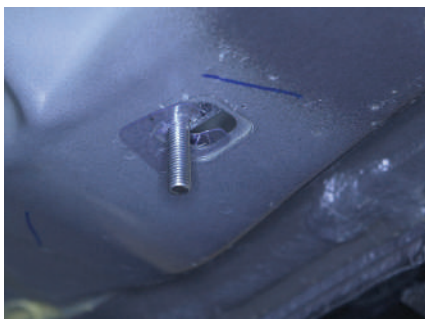
Locate the driver-side rear mounting tab and rear plastic cover. Remove the three factory nuts and two push-pins.



Step 11

Remove the square hole plug in the rocker panel. Insert an M10 T-bolt plate into the opening. Slide a plastic bolt retainer over the thread of the bolt to hold the bolt in place.

Repeat steps 5 through 7 to install the L-shaped hanger bracket and rear mounting bracket.



Step 12

To reinstall the rear plastic cover, hold the cover up to the vehicle and mark the plastic cover using a paint marker.

With the plastic cover marked, lay it down on a flat surface and use a utility knife to cut out the marked area.

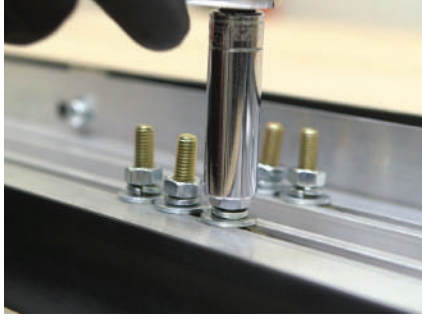
Reinstall the rear plastic cover using the previously removed factory hardware and push-pins.



Step 13

Remove the M8 nuts, M8 lock washers and M8 flat washers from the running board.

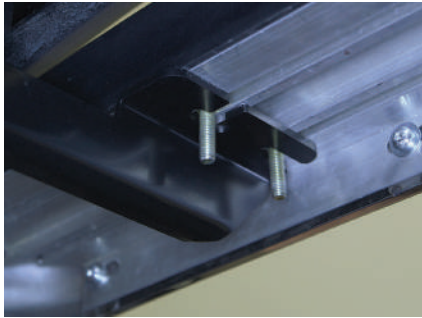
Place the running board onto the brackets and align the M8 bolts with the slots in the brackets on the vehicle.



Step 14

Attach the running board to the brackets using six M8 bolts, lock washers, flat washers and nuts.

Snug the hardware, but do not fully tighten.



Step 15

Adjust and level the running board, centering it between the front and rear wheel wells.

With the running board in position, it is recommended to tighten all brackets to the vehicle first, followed by the running board connections.



Step 16

Repeat steps 1 through 15 on the passenger side of the vehicle.

Congratulations on the installation of your new ARIES AeroTread™ running boards.

With the running boards installed, periodic inspections should be performed to ensure all mounting hardware remains tight.

To protect your investment, see the 'Notes and Maintenance' section on the first page of this instruction manual.

