

### Parts List

1	Driver / left running board
1	Passenger / right running board
1	Mounting bracket, driver / left, front
1	Mounting bracket, passenger / right, front
1	Mounting bracket, driver / left, middle
1	Mounting bracket, passenger / right, middle
1	Mounting bracket, driver / left, rear
1	Mounting bracket, passenger / right, rear
12	Hex bolt, M8
12	Flat washer, M8
12	Lock washer, M8
12	Hex nut, M8
12	Handle nut, M8

### Additional Hardware\*

12	Hex bolt, M8
12	Flat washer, M8
12	Lock washer, M8
12	Hex nut, M8

\* Running boards are supplied with additional hardware. Quantities listed are in addition to the standard supplied hardware.

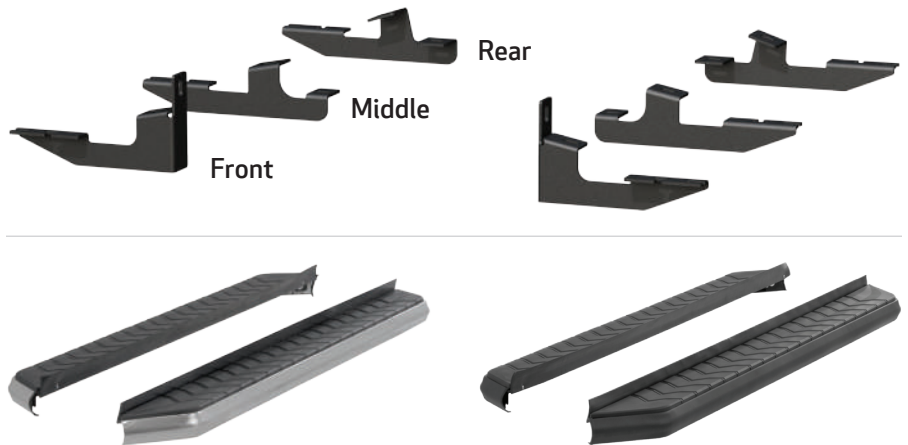
### Tools Required

Torque wrench	Ratchet
Extension	Socket, 13mm
Level	

### Level of Difficulty

Easy

### Product Image



### Notes and Maintenance

Before you begin installation, read all instructions thoroughly.

Proper tools will improve the quality of installation and reduce the time required.

For stainless steel, polish may be used to clear small scratches and scuffs on the finish. Mild soap may be used also to clean the product.

For black finishes, mild soap may be used to clean the product.

Refer to the table below when securing hardware during the installation process to help prevent damage to the product or vehicle.

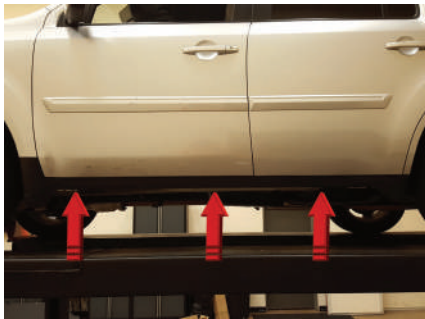
### Torque Specifications

METRIC		SAE	
M6 bolt	3 ft.-lbs.	1/4" bolt	3 ft.-lbs.
M8 bolt	7 ft.-lbs.	5/16" bolt	7 ft.-lbs.
M12 bolt	16 ft.-lbs.	3/8" bolt	16 ft.-lbs.
M12 bolt	28 ft.-lbs.	7/16" bolt	20 ft.-lbs.
--	--	1/2" bolt	28 ft.-lbs.

Use above torque setting unless otherwise noted

### Step 1

Starting on the driver side, locate the three mounting locations underneath the vehicle.



### Step 2

Locate the driver-side front mounting tabs.

Place the front driver-side mounting bracket onto the vehicle and secure with two M8 hex bolts, lock washers and flat washers.

Snug the hardware, but do not fully tighten. If there are not threaded inserts, use the provided handle nuts.



### Step 3

Repeat step 2 to install the middle and rear mounting brackets.

**Note:** If threaded inserts are not available for the rear mounting bracket, go to step 4 for further instruction.



### Step 4

If threaded inserts are not available for the rear mounting bracket, expand the existing hole to fit the handle nut inside.



### Step 5

Place the rear driver-side mounting bracket onto the vehicle and secure with two M8 hex bolts, lock washers and flat washers.

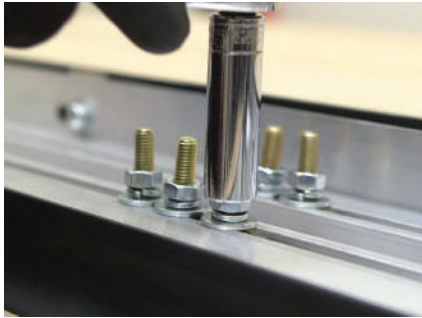
Snug the hardware, but do not fully tighten.



### Step 6

Remove the M8 nuts, lock washers and flat washers from the running board.

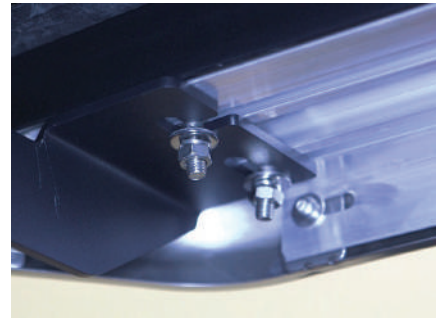
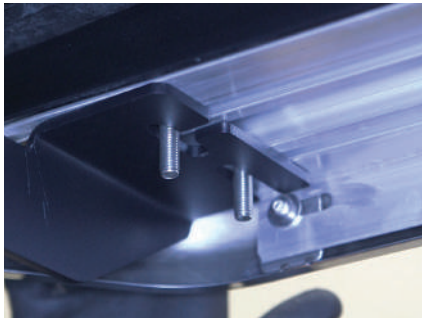
Place the running board onto the brackets and align the M8 bolts with the slots in the brackets on the vehicle.



### Step 7

Attach the running board to the brackets using six M8 bolts, lock washers, flat washers and hex nuts.

Snug the hardware, but do not fully tighten.



### Step 8

Adjust and level the running board, centering it between the front and rear wheel wells.

With the running board in position, it is recommended to tighten all brackets to the vehicle first, followed by the running board connections.



## Step 9

Repeat steps 1 through 8 on the passenger side of the vehicle.

Congratulations on the installation of your new ARIES AeroTread™ running boards.

With the running boards installed, periodic inspections should be performed to ensure all mounting hardware remains tight.

To protect your investment, see the 'Notes and Maintenance' section on the first page of this instruction manual.

