

Parts List

1	Driver / left running board
1	Passenger / right running board
2	Mounting bracket, front
2	Mounting bracket, middle
2	Mounting bracket, rear
8	T-bolt, 34mm tab
4	T-bolt, 62mm tab
12	Flat washer, 8mm
12	Lock washer, 8mm
12	Hex nut, 8mm
12	Bolt retainer, plastic

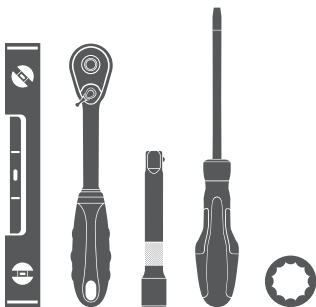
Additional Hardware*

12	Hex bolt, 8mm
12	Flat washer, 8mm
12	Lock washer, 8mm
12	Hex nut, 8mm

* Running boards are supplied with additional hardware. Quantities listed are in addition to the standard supplied hardware.

Tools Required

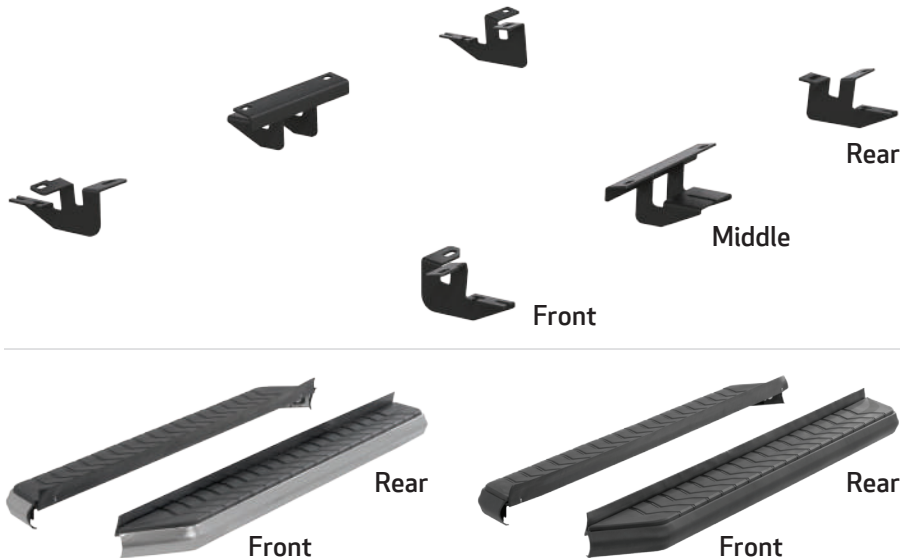
Ratchet	Socket, 13mm
Socket extension	Level
Flathead screwdriver	



Level of Difficulty

Easy

Product Image



Notes and Maintenance

Before you begin installation, read all instructions thoroughly.

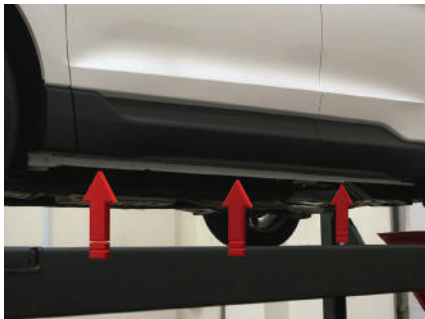
Proper tools will improve the quality of installation and reduce the time required.

For stainless steel, polish may be used to clear small scratches and scuffs on the finish. Mild soap may be used also to clean the product.

For black finishes, mild soap may be used to clean the product.

Step 1

Starting on the driver side, locate the three mounting locations underneath the vehicle. Locate the front bracket for the driver side.



Step 2

Locate the hole plug on the front driver side and remove it to clear the opening.

Insert a 34mm T-bolt plate into the opening. Slide a plastic bolt retainer over the thread of the bolt to hold the bolt in place.

Note: T-bolt may be difficult to insert. It is recommended to have the long end of the T-bolt facing toward the front of the vehicle.



Step 3

Locate the second mounting hole and insert a 62mm T-bolt plate into the opening. Slide a plastic bolt retainer over the thread of the bolt to hold the bolt in place.



Step 4

Place the front driver side bracket onto the vehicle and secure with two 8mm hex nuts, two 8mm lock washers and two 8mm flat washers.

Snug the hardware, but do not fully tighten.



Step 5

Locate the two hole plugs at the middle mounting location and remove them to clear the openings.

Insert a 34mm T-bolt plate into both openings and place the middle bracket onto the vehicle.



Step 6

Secure the middle bracket with an 8mm hex nut, 8mm lock washer and 8mm flat washer for both mounting points.

Snug the hardware, but do not fully tighten.



Step 7

Locate the hole plug on the rear driver side and remove it. Insert a 34mm T-bolt plate into the opening. Slide a plastic bolt retainer over the thread of the bolt to hold the bolt in place.

Insert a 62mm T-bolt plate into the second opening. Slide a plastic bolt retainer over the thread of the bolt to hold the bolt in place.



Step 8

Place the rear bracket onto the vehicle and secure it with an 8mm hex nut, 8mm lock washer and 8mm flat washer for both mounting points.

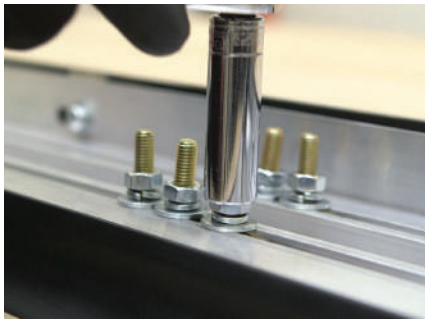
Snug the hardware, but do not fully tighten.



Step 9

Remove the 8mm nuts, 8mm lock washers and 8mm flat washers from the running board.

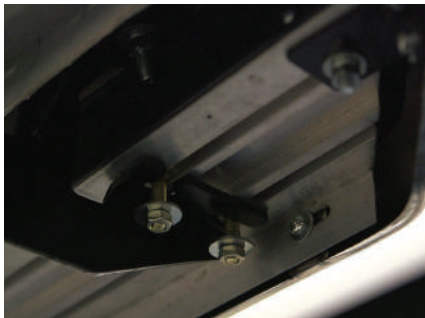
Place the running board onto the brackets and align the 8mm bolts with the slots in the brackets on the vehicle.



Step 10

Attach the running board to the brackets using six 8mm bolts, six 8mm lock washers, six 8mm flat washers and six 8mm nuts.

Snug the hardware, but do not fully tighten.



Step 11

Adjust and level the running board, centering it between the front and rear wheel wells.

With the running board in position, it is recommended to tighten all brackets to the vehicle first, followed by the running board connections.



Step 12

Repeat steps 1 through 11 on the passenger side of the vehicle.

Congratulations on the installation of your brand new ARIES AeroTread™ running boards.

With the running boards installed, periodic inspections should be performed to ensure all mounting hardware remains tight.

To protect your investment, see the 'Notes and Maintenance' section on the first page of this instruction manual.

