



INSTALLATION MANUAL

2055105

Level of Difficulty

Easy

Parts List

1	Driver / left side bar / running board*
1	Passenger / right side bar / running board*
8	VersaTrac® mounting bracket
32	Hex bolt, M8 (B)
32	Lock washer, M8 (B)
32	Flat washer, M8 (B)
16	Hex nut, M8 (B)

(B) = Black hardware

*Running boards sold separately

Depending on the year of the vehicle, clip nuts may or may not be needed

Tools Required

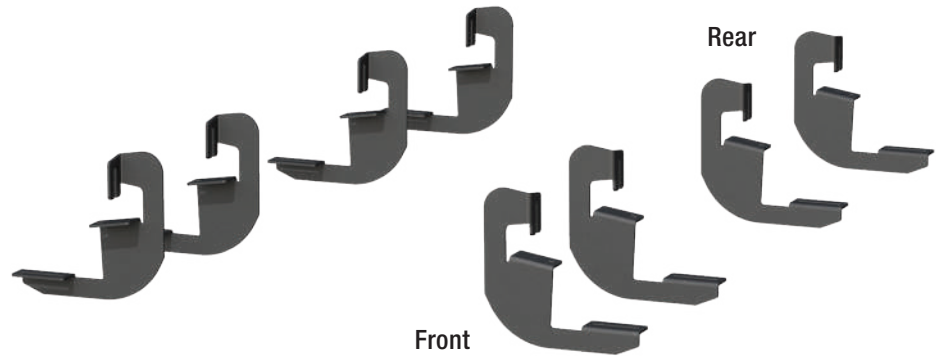
Ratchet	Torque wrench
Socket set	Level
Socket extension	--

Torque Specifications

M8 bolt	7 ft-lbs.
---------	-----------

Use above torque setting unless otherwise noted

Product Photo



AdvantEDGE™ (not included)



RidgeStep® (not included)



NOTICE

Before you begin installation, read all instructions thoroughly.

Proper tools will improve the quality of installation and reduce the time required.

To help prevent damage to the product or vehicle, refer to the specified torque specifications when securing hardware during the installation process.

Maintenance

To protect the product, wax after installing. Regular waxing is recommended to add a protective layer over the finish. Do not use any type of polish or wax that may contain abrasives that could damage the finish.

For polished, gloss and other smooth finishes, polish may be used to clear small scratches and scuffs on the finish.

Mild automotive detergent may be used to clean the product. Do not use dish detergent, abrasive cleaners, abrasive pads, wire brushes or other similar products that may damage the finish.

Step 1

Starting on the passenger side, locate the six mounting locations along the inside of the rocker panel. Each location will have two threaded holes directly above / below one another with a plastic cover.

This installation will be using the first, third, fourth and sixth mounting locations.

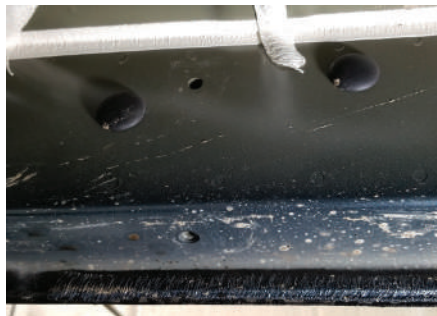


Step 2

Remove the plastic covers from the threaded holes at the front mounting location.

Attach the bracket to the body panel using an M8 hex bolt, lock washer and flat washer.

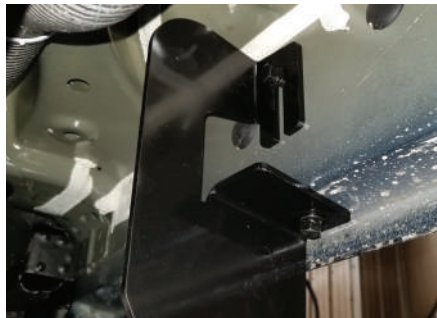
Snug the hardware, but do not fully tighten.



Step 3

Secure the bracket with a second M8 hex bolt, lock washer and flat washer, using the factory-threaded nut on the edge of the body panel.

Snug the hardware, but do not fully tighten.



Step 4

Repeat steps 2 and 3 to install the remaining three brackets on the passenger side.

Repeat steps 1 through 4 on the driver side.

If installing RidgeStep® running boards, skip to step 6A.

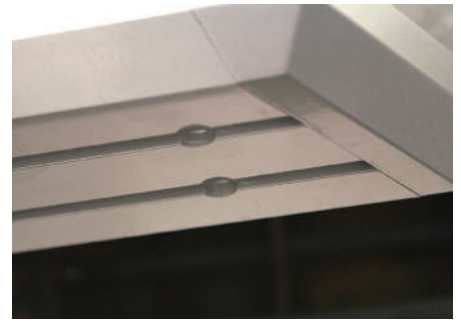
If installing AdvantEDGE™ side bars, proceed to step 5A.



Step 5A - AdvantEDGE™ Side Bars

Carefully place the side bar onto the mounting brackets.

Ensure the outer edge of the side bar is lined up with the outer edge of the mounting brackets.



Step 5B - AdvantEDGE™ Side Bars

Locate the round slots on the base of the side bar.

Insert eight M8 hex bolts into the rail slots, four by the front tire opening and four by the back tire opening.



Step 5C - AdvantEDGE™ Side Bars

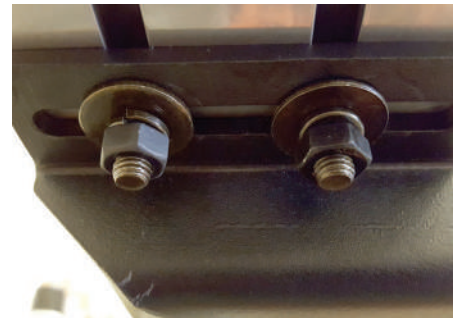
Slide the bolts down the rail so that two bolts are positioned for each bracket.

Carefully lift the side bar up and move the bolts as necessary so they are in line with the slots on the mounting brackets.

Secure the side bar to the brackets using M8 flat washers, lock washers and hex nuts.

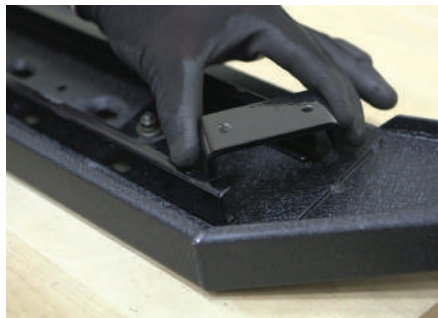
Snug the hardware, but do not fully tighten.

Continue to step 7 of the installation.



Step 6A - RidgeStep® Running Boards

Slide the four C-shaped track mounting brackets into the rail slots.



Step 6B - RidgeStep® Running Boards

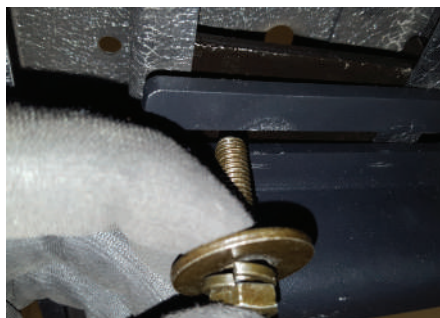
Carefully place the running board onto the mounting brackets.

Align the C-shaped track mounting brackets with the mounting brackets on the vehicle.



Step 6C - RidgeStep® Running Boards

Attach the C-shaped track mounting brackets to the mounting brackets using M8 hex bolts, lock washers and flat washers.



Step 7

At this time, adjust the side bar / running board to the desired location.

With the side bar / running board in position, it is recommended to tighten all brackets to the vehicle first, followed by the side bar / running board connections.

Tighten down all hardware and torque to the values specified on the first page of this manual.



Step 8

Repeat steps 1 through 8 on the driver side of the vehicle.

Congratulations on the installation of your new ARIES AdvantEDGE™ side bars / RidgeStep® running boards.

With the side bars / running boards installed, periodic inspections should be performed to ensure all mounting hardware remains tight.

To protect your investment, see the 'Notes and Maintenance' section on the second page of this instruction manual.

