

### Parts List

1	Driver / left side bar / running board
1	Passenger / right side bar / running board
6	VersaTrac™ mounting bracket, universal
12	Hex bolt, M8 (B)
12	Flat washer, M8 (B)
12	Lock washer, M8 (B)
12	Hex nut, M8 (B)
12	Clip nut, M10
24	Hex bolt, M10 (S)
36	Flat washer, M10 (S)
24	Lock washer, M10 (S)
12	Hex nut, M10 (S)

(S) = Silver hardware  
(B) = Black hardware

### Tools Required

Ratchet	Socket, 13mm
Torque wrench	Socket, 16mm
Level	

### Level of Difficulty

Easy

### Product Image



AdvantEDGE™



RidgeStep™



Torque Specifications		
METRIC	M6 bolt	3 ft.-lbs.
	M8 bolt	7 ft.-lbs.
	M10 bolt	16 ft.-lbs.
	M12 bolt	28 ft.-lbs.
SAE	1/4" bolt	3 ft.-lbs.
	5/16" bolt	7 ft.-lbs.
	3/8" bolt	16 ft.-lbs.
	7/16" bolt	20 ft.-lbs.
	1/2" bolt	28 ft.-lbs.

**Notes and Maintenance**

Before you begin installation, read all instructions thoroughly.

Proper tools will improve the quality of installation and reduce the time required.

For chrome powder coat, polish may be used to clear small scratches and scuffs on the finish. Mild soap may be used also to clean the product.

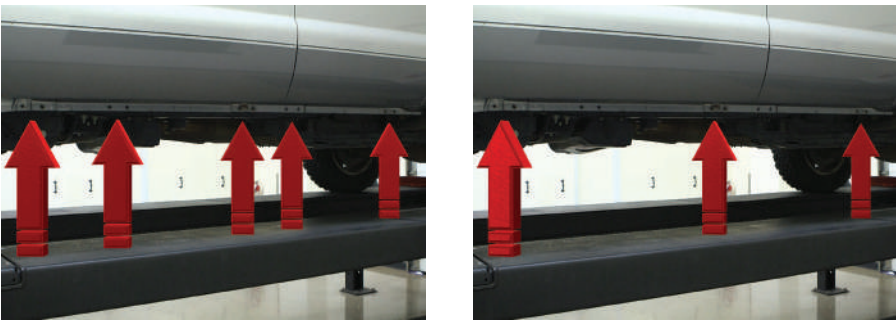
For black finishes, mild soap may be used to clean the product.

Refer to the table to the left when securing hardware during the installation process to help prevent damage to the product or vehicle.

**Step 1**

Starting on the driver side, locate the five mounting tabs along the bottom edge of the vehicle.

This installation will use the first, third and fifth mounting tabs.

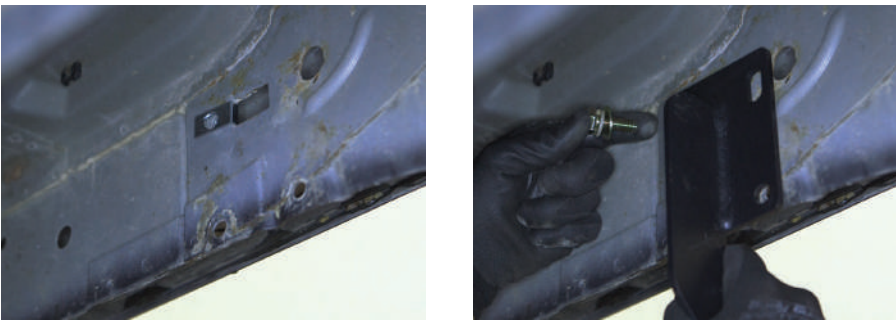


**Step 2**

Starting at the front driver-side mounting location, insert an M10 clip nut into the square hole and align it over the adjacent round hole.

Place a bracket onto the vehicle and secure with an M10 hex bolt, lock washer and flat washer.

Snug the hardware, but do not fully tighten.



**Step 3**

Finish securing the front mounting bracket to the vehicle using an M10 hex bolt and flat washer from the outside of the bracket and an M10 hex nut, lock washer and flat washer on the inside.

Repeat this step for the remaining bottom bolt location.



#### Step 4

Locate the middle bracket mounting tab and insert two M10 clip nuts and align them with the adjacent round holes.

Place a bracket onto the vehicle and secure with two M10 hex bolts, two lock washers and two flat washers on the top mounting locations.

Finish securing the middle mounting bracket to the vehicle using two M10 hex bolts and two flat washers from the outside of the bracket and two M10 hex nuts, two lock washers and two flat washers on the inside.



#### Step 5

Repeat steps 2 and 3 to install the rear bracket over the mounting tab location from step 1.



## If installing RidgeStep™ running boards, skip to Step 7A

#### Step 6A - AdvantEDGE™ Side Bars

Carefully place the side bar onto the mounting brackets.

Ensure the outer edge of the side bar is lined up with the outer edge of the mounting brackets.

Locate the round slots on the base of the side bar. Insert two M8 hex bolts into each slot, sliding them towards the front mounting bracket.



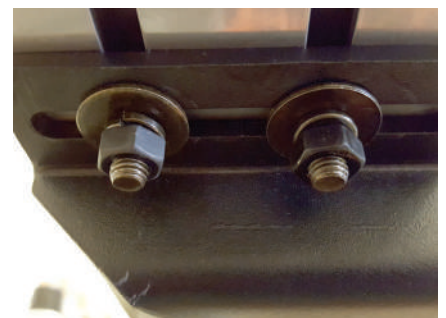
#### Step 6B - AdvantEDGE™ Side Bars

Slide the bolts down the rail so that two bolts are positioned for each bracket.

Carefully lift the side bar up and move the bolts as necessary so they are in line with the slots on the mounting brackets.

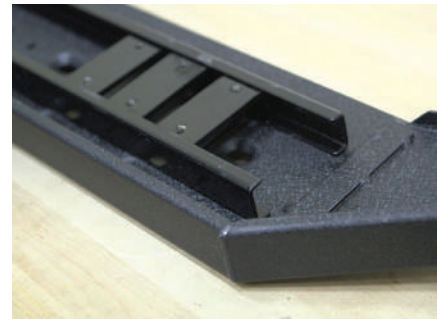
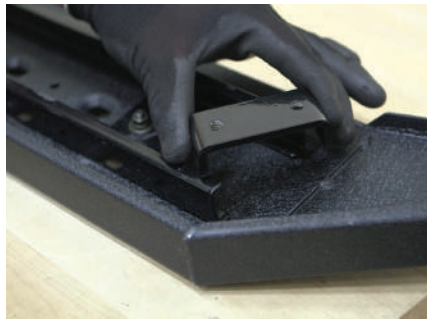
Secure the side bar to the brackets using flat washers, lock washers and M8 hex nuts.

Snug the hardware, but do not fully tighten. Continue to step 8.



### Step 7A - RidgeStep™ Running Boards

Slide the three C-shaped track mounting brackets into the rail slots.

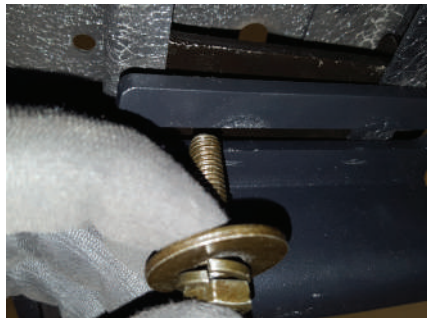


### Step 7B - RidgeStep™ Running Boards

Carefully place the running board onto the mounting brackets.

Align the C-shaped track mounting brackets with the mounting brackets on the vehicle.

Attach the C-shaped track mounting brackets to the mounting brackets using M8 hex bolts, lock washers and flat washers.



### Step 8

At this time, adjust the side bar / running board to the desired location.

With the side bar / running board in position, it is recommended to tighten all brackets to the vehicle first, followed by the side bar / running board connections.

For recommended torque specifications, refer to the table on page two.



### Step 9

Repeat steps 1 through 8 on the passenger side of the vehicle.

Congratulations on the installation of your new ARIES AdvantEDGE™ side bars / RidgeStep™ running boards.

With the side bars / running boards installed, periodic inspections should be performed to ensure all mounting hardware remains tight.

To protect your investment, see the 'Notes and Maintenance' section on the second page of this instruction manual.

