

Parts List

1	Driver / left, side bar / running board
1	Passenger / right, side bar / running board
6	VersaTrac™ mounting bracket, universal
18	Flat washer, M8 (S)
18	Lock nut, M8 (S)
12	Hex bolt, M8 (B)
12	Flat washer, M8 (B)
12	Lock washer, M8 (B)
12	Hex nut, M8 (B)
18	Nylon flat washer, M8

(S) = Silver hardware
(B) = Black hardware

Tools Required

Ratchet	Extension
Torque wrench	Socket, 13mm
Level	

Level of Difficulty

Easy

Product Image



AdvantEDGE™



RidgeStep™



Torque Specifications

	METRIC	
METRIC	M6 bolt	3 ft.-lbs.
	M8 bolt	7 ft.-lbs.
	M10 bolt	16 ft.-lbs.
	M12 bolt	28 ft.-lbs.
SAE	1/4" bolt	3 ft.-lbs.
	5/16" bolt	7 ft.-lbs.
	3/8" bolt	16 ft.-lbs.
	7/16" bolt	20 ft.-lbs.
	1/2" bolt	28 ft.-lbs.

Notes and Maintenance

Before you begin installation, read all instructions thoroughly.

Proper tools will improve the quality of installation and reduce the time required.

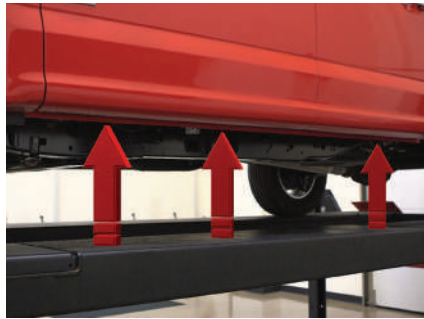
For chrome powder coat, polish may be used to clear small scratches and scuffs on the finish. Mild soap may be used also to clean the product.

For black finishes, mild soap may be used to clean the product.

Refer to the table to the left when securing hardware during the installation process to help prevent damage to the product or vehicle.

Step 1

Starting on the driver side, locate the three mounting tabs along the bottom edge of the vehicle body.



Step 2

Starting at the front driver-side mounting location, locate the three threaded bolts on the inside of the body panel.

Before attaching the bracket, place a nylon flat washer on each of the threaded bolts to prevent any galvanic corrosion.

Attach the bracket to the body panel using a silver M8 flat washer and lock nut.

Snug the hardware, but do not fully tighten.



Step 3

Repeat step 2 to install the second and third brackets over the mounting tab locations from step 1.



If installing RidgeStep™ running boards, skip to Step 5A

Step 4A - AdvantEDGE™ Side Bars

Carefully place the side bar onto the mounting brackets.

Ensure the outer edge of the side bar is lined up with the outer edge of the mounting brackets.



Step 4B - AdvantEDGE™ Side Bars

Locate the round slots on the base of the side bar.

Insert two black M8 hex bolts into each slot, sliding them towards the front mounting bracket.

Insert an additional black M8 hex bolt into each rail slot by the back tire opening.



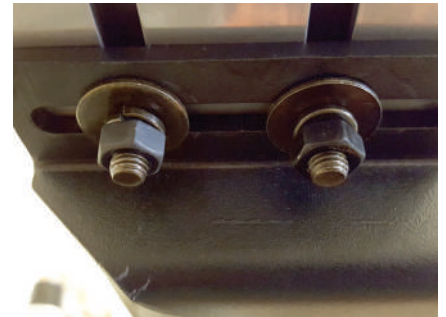
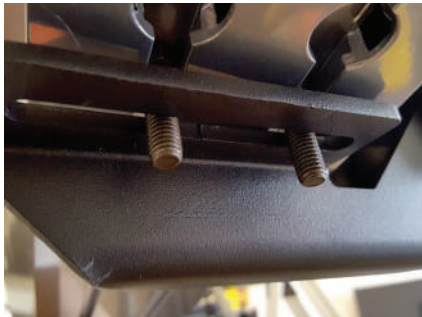
Step 4C - AdvantEDGE™ Side Bars

Slide the bolts down the rail so that two bolts are positioned for each bracket.

Carefully lift the side bar up and move the bolts as necessary so they are in line with the slots on the mounting brackets.

Secure the side bar to the brackets using black flat washers, lock washers and M8 hex nuts.

Snug the hardware, but do not fully tighten. Continue to step 6.



Step 5A - RidgeStep™ Running Boards

Slide the three C-shaped track mounting brackets into the rail slots.



Step 5B - RidgeStep™ Running Boards

Carefully place the running board onto the mounting brackets.

Align the C-shaped track mounting brackets with the mounting brackets on the vehicle.



Step 5C - RidgeStep™ Running Boards

Attach the C-shaped track mounting brackets to the mounting brackets using black M8 hex bolts, lock washers and flat washers.



Step 6

At this time, adjust the side bar / running board to the desired location.

With the side bar / running board in position, it is recommended to tighten all brackets to the vehicle first, followed by the side bar / running board connections.

For recommended torque specifications, refer to the table on page two.



Step 7

Repeat steps 1 through 6 on the passenger side of the vehicle.

Congratulations on the installation of your new ARIES AdvantEDGE™ side bars / RidgeStep™ running boards.

With the side bars / running boards installed, periodic inspections should be performed to ensure all mounting hardware remains tight.

To protect your investment, see the 'Notes and Maintenance' section on the second page of this instruction manual.

