

INSTALLATION MANUAL

2055127

This is the first of two manuals required to complete this installation. The second manual is included with your side bars / running boards.

Level of Difficulty

Easy

Parts List

1	Driver / left running board*
1	Passenger / right running board*
6	Mounting bracket, universal
3	U-bolt
8	Nylock nut, M8
12	Hex bolt, M8
20	Flat washer, M8
12	Lock washer, M8
12	Clip nut, M8
12	Hex bolt, M8 (B)
12	Flat washer, M8 (B)
12	Lock washer, M8 (B)
3	Nylock nut, M10 (B)
3	Plastic bolt retainer, M10
3	Bolt plate, M10
3	Flat washer, M10

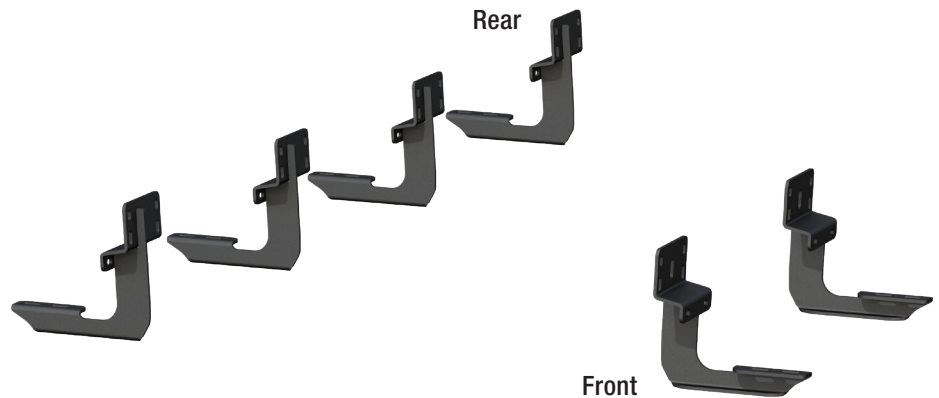
(B) = Black hardware

*Running boards sold separately

Tools Required

Ratchet	Socket, 13mm
Torque wrench	Socket, 17mm
Drill	Level
Drill bit, 1/16"	Flathead screwdriver
Drill bit, 3/8"	Marker

Product Photo



NOTICE

Before you begin installation, read all instructions thoroughly.

Proper tools will improve the quality of installation and reduce the time required.

To help prevent damage to the product or vehicle, refer to the specified torque specifications when securing hardware during the installation process.

Maintenance

To protect the product, wax after installing. Regular waxing is recommended to add a protective layer over the finish. Do not use any type of polish or wax that may contain abrasives that could damage the finish.

For polished, gloss and other smooth finishes, polish may be used to clear small scratches and scuffs on the finish.

Mild automotive detergent may be used to clean the product. Do not use dish detergent, abrasive cleaners, abrasive pads, wire brushes or other similar products that may damage the finish.

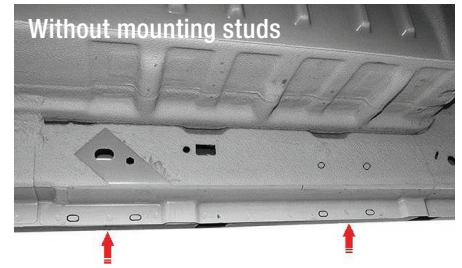
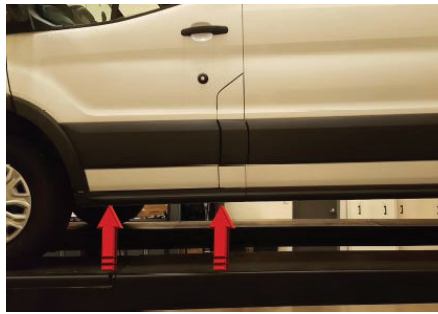
Torque Specifications

Metric			SAE		
	M6 bolt	3 ft-lbs.		1/4" bolt	3 ft-lbs.
M8 bolt	7 ft-lbs.	5/16" bolt	7 ft-lbs.		
M10 bolt	16 ft-lbs.	3/8" bolt	16 ft-lbs.		
M12 bolt	28 ft-lbs.	7/16" bolt	20 ft-lbs.		
--	--	1/2" bolt	28 ft-lbs.		

Use above torque setting unless otherwise noted

Step 1

Starting on the driver side, locate the two mounting locations along the bottom edge of the vehicle body.



Step 2

If the vehicle is equipped with mounting studs, only mark the mounting locations in the pinch weld area.

Position the first mounting bracket behind the rib in the pinch weld as indicated.

With a marker, place a dot in the center of the two outside mounting slots in both the top and bottom mounting locations.

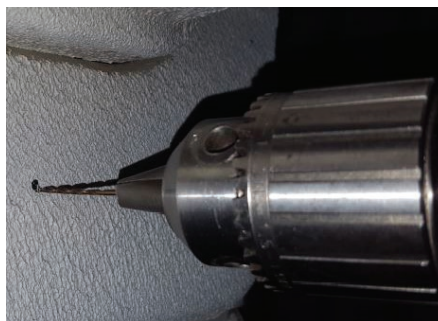


Step 3

Using a 1/16" drill bit, drill a pilot hole in each of the marked spots followed by the full sized 3/8" holes in each location.

⚠ WARNING

Do not drill through the welds in the pinch weld. Slide the bracket forward or rearward to move the slots away from the factory spot welds. Do not drill into or through the outer plastic rocker panel cover.



Step 4

Pull back the plastic trim after releasing the push pins. Using a flathead screwdriver, pry the push pins apart, but not off.

Insert clip nuts over the drilled holes in the pinch weld between the plastic trim and rocker panel.



Step 5

Insert a U-bolt into the top two drilled holes as shown.

NOTICE

If your vehicle is equipped with mounting studs, the U-bolts will not be necessary.



Step 6

Attach the top of the bracket using two M8 flat washers and nylock nuts.

Secure the bottom of the bracket by threading an M8 hex bolt, lock washer and flat washer through the bracket and into the clip nut installed in step 4.



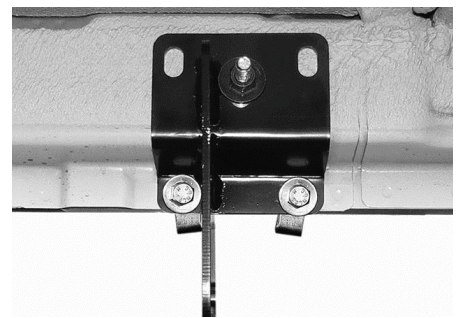
Step 7

To install the driver-side rear bracket, insert an M10 bolt plate into the slot in the rocker panel. Secure the bolt plate with a plastic bolt retainer to prevent it from falling into the rocker panel.

While holding the bracket in place over the 10mm stud, mark the two lower slot locations on the rocker panel.

Secure the top of the bracket to the M10 stud with an M10 flat washer and nylock nut.

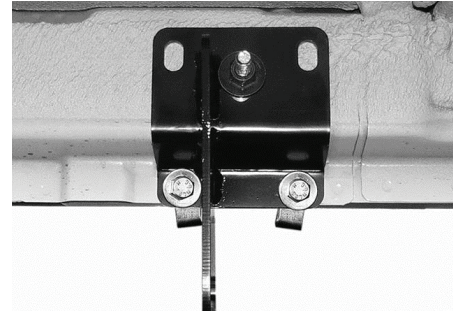
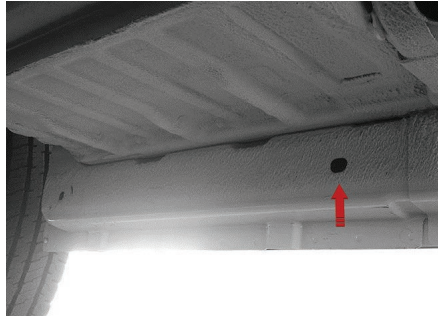
Repeat step 5 to install clip nuts over the lower drilled holes and secure with two M8 hex bolts, lock washers and flat washers.



Step 8

On the passenger side of the vehicle, identify the front bracket location by identifying the slot in the rocker panel.

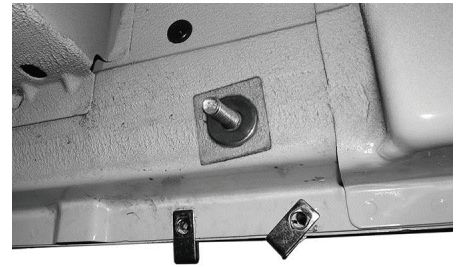
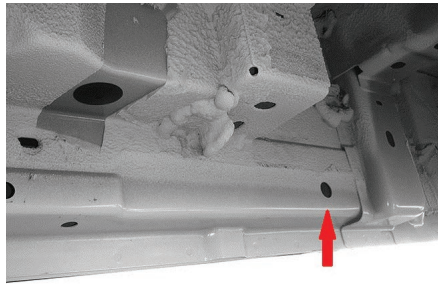
Repeat step 7 to install the passenger-side front bracket with an M10 bolt plate in the top location and M8 hex bolts and clip nuts in the lower location.



Step 9

Locate the rear passenger-side bracket mounting point by identifying the rear slot in the rocker panel.

Repeat step 7 to install the passenger-side front and rear brackets with an M10 bolt plate in the top location and M8 hex bolts and clip nuts in the lower location.

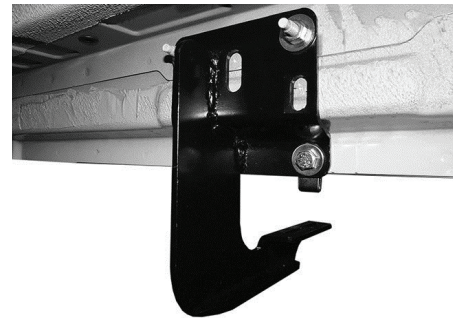
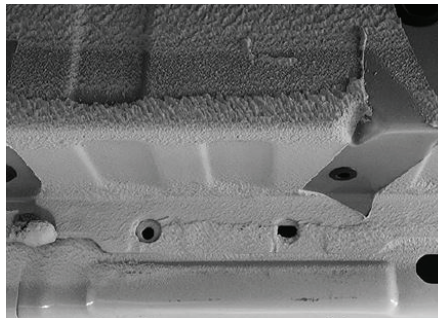


Step 10

For the middle two brackets, align the top slots in the brackets with the holes in the rocker panel. Mark the lower mounting locations and follow steps 3 through 6 to drill the lower mounting locations and install the brackets.

NOTICE

To complete the installation, refer to the manual included with your running board / side steps.



INSTALLATION MANUAL

C3696

Level of Difficulty

Easy

This is the second of two manuals required to complete this installation. The first manual is included with your mounting brackets.

Parts List

1	Driver / left RidgeStep™ running board
1	Passenger / right RidgeStep™ running board
8	C-shape mounting plate

Attachment hardware is supplied with the mounting brackets. Hardware quantities will vary depending on the vehicle application.

Tools Required

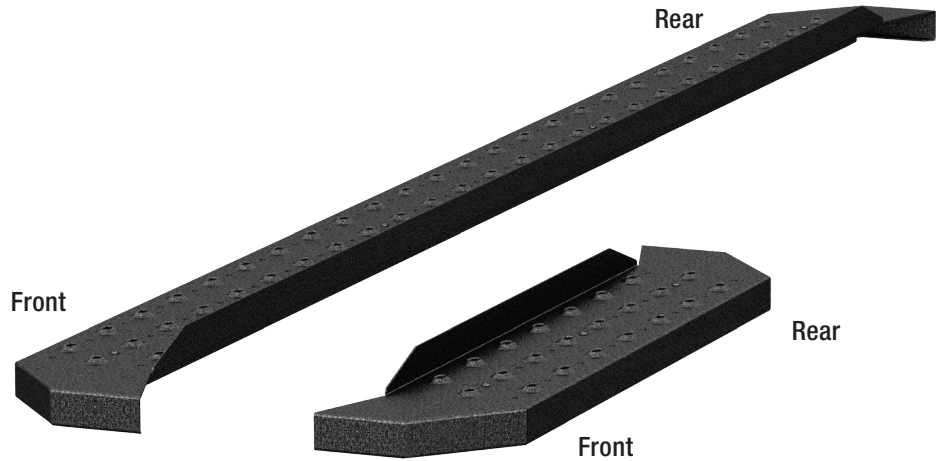
Ratchet set	Torque wrench
-------------	---------------

Torque Specifications

	Metric	SAE
	M6 bolt	3 ft.-lbs.
	M8 bolt	7 ft.-lbs.
	M10 bolt	16 ft.-lbs.
	M12 bolt	28 ft.-lbs.
	1/4" bolt	3 ft.-lbs.
	5/16" bolt	7 ft.-lbs.
	3/8" bolt	16 ft.-lbs.
	7/16" bolt	20 ft.-lbs.
	1/2" bolt	28 ft.-lbs.

Use above torque setting unless otherwise noted

Product Photo



Notes and Maintenance

Before you begin installation, read all instructions thoroughly.

Proper tools will improve the quality of installation and reduce the time required.

To protect the product, wax after installing. Regular waxing is recommended to add a protective layer over the finish. Do not use any type of polish or wax that may contain abrasives that could damage the finish.

For polished, gloss and other smooth finishes, polish may be used to clear small scratches and scuffs on the finish.

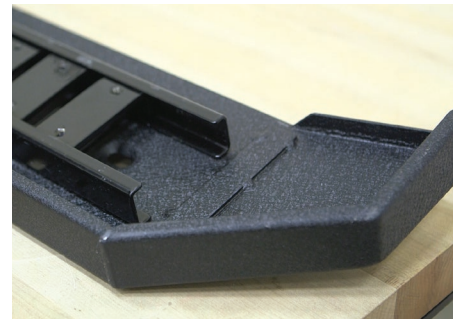
Mild automotive detergent may be used to clean the product. Do not use dish detergent, abrasive cleaners, abrasive pads, wire brushes or other similar products that may damage the finish.

Refer to the table to the left when securing hardware during the installation process to help prevent damage to the product or vehicle.

Step 1

Place the C-shaped mounting plates into the track on the running board.

Note: The number of mounting brackets may vary based on application. Use one C-shaped mounting plate per bracket.



Step 2

Carefully place the running board onto the mounting brackets.

Slide the C-shaped mounting plates along the track to align with the mounting brackets on the vehicle.



Step 3

Secure the running board to the mounting brackets using two M8 hex bolts, two lock washers and two flat washers.

At this time, adjust the running board to the desired location.

With the running board in position, it is recommended to tighten all brackets to the vehicle first, followed by the running board connections.

For recommended torque specifications, refer to the table on page 1.



Step 4

Repeat all steps for the passenger side of the vehicle.

Congratulations on the installation of your new ARIES RidgeStep™ running boards.

With the running boards installed, periodic inspections should be performed to ensure all mounting hardware remains tight.

To protect your investment, see the 'Notes and Maintenance' section on the first page of this installation manual.



Representative Image