

Installation Instructions

2055126

Parts List

1	Driver / left running board
1	Passenger / right running board
1	Driver / left mounting bracket, front
1	Driver / left mounting bracket, rear
1	Passenger / right side mounting bracket, front 1
1	Passenger / right side mounting bracket, front 2
1	Passenger / right side mounting bracket, middle
2	Passenger / right side mounting bracket, rear
1	Thread set tool, M8
3	Threaded insert, M8
24	Hex bolts, M8 - 1.25 x 25mm
24	Flat washer, M8
24	Lock washer, M8
10	Clip nuts, M8
2	Plastic bolt retainer, M10
2	Bolt plate, M10 - 1.50 x 35mm
2	Flat washer, M10
2	Lock washer, M10
2	Hex nut, M10
2	Plastic bolt retainer, M12
2	Bolt plate, M12 - 1.75 x 40mm
2	Flat washer, M12
2	Lock washer, M12
2	Hex nut, M12

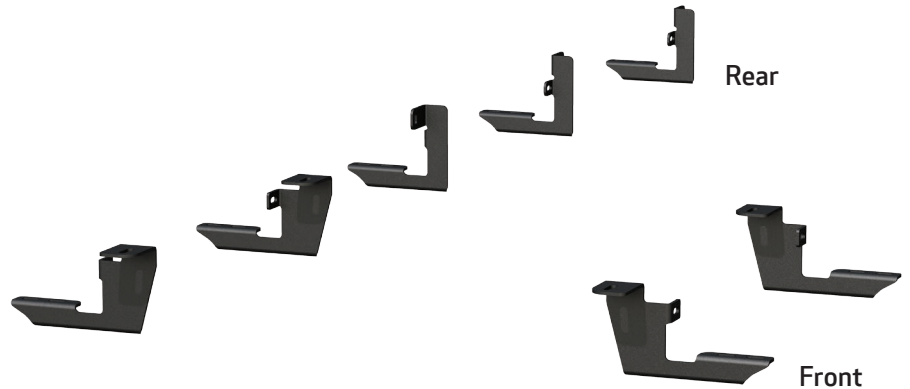
Tools Required

Torque wrench	Socket, 13mm
Extension	Socket, 16mm
5/16" drill bit	Socket, 18mm
7/16" drill bit	Flathead screwdriver

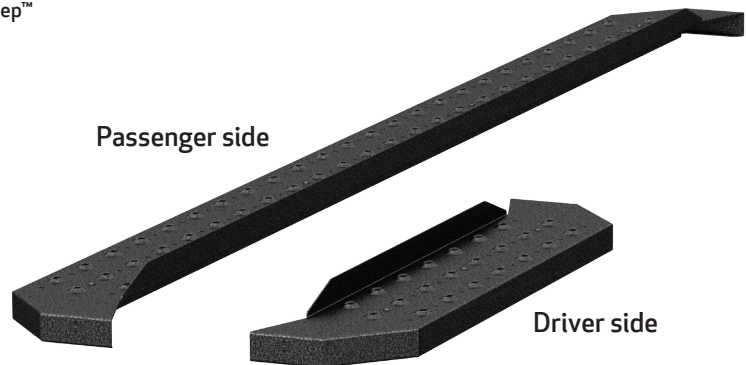
Level of Difficulty

Easy

Product Image



RidgeStep™



Notes and Maintenance

Before you begin installation, read all instructions thoroughly.

Proper tools will improve the quality of installation and reduce the time required.

For black finishes, mild soap may be used to clean the product.

Refer to the table below when securing hardware during the installation process to help prevent damage to the product or vehicle.

Torque Specifications

METRIC	Torque Specifications		SAE	Torque Specifications	
	Bolt	Torque		Bolt	Torque
M6 bolt	3 ft.-lbs.	1/4" bolt	3 ft.-lbs.		
M8 bolt	7 ft.-lbs.	5/16" bolt	7 ft.-lbs.		
M10 bolt	16 ft.-lbs.	3/8" bolt	16 ft.-lbs.		
M12 bolt	28 ft.-lbs.	7/16" bolt	20 ft.-lbs.		
--	--	1/2" bolt	28 ft.-lbs.		

Step 1

Starting on the driver-side, locate the two mounting points on the underside of the vehicle.

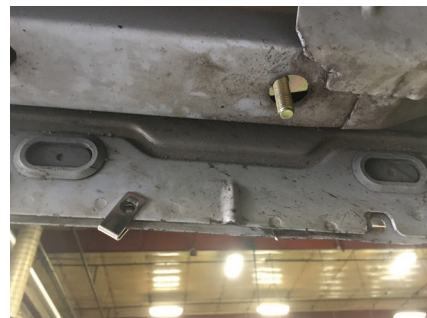


Step 2

Locate the driver-side front mounting bracket, remove the hole plug and insert an M10 bolt plate. Slide a plastic bolt retainer over the threads of the bolt plate to hold the bolt plate in place.

Slide an M8 clip nut over the lower mounting point.

Note: The lower mounting holes may need to be enlarged to 5/16" to allow for an M8 hex bolt to fit.



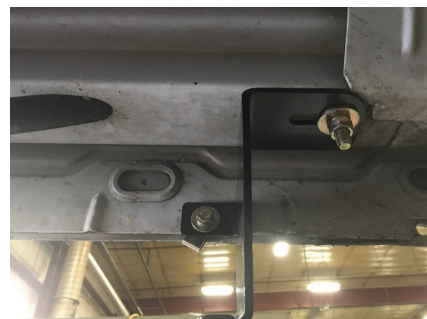
Step 3

Place the front driver-side mounting bracket over the mounting points.

Secure the top mounting point using an M10 flat washer, M10 lock washer and M10 hex nut.

Finish securing the the bracket using an M8 hex bolt, M8 lock washer and M8 flat washer.

Snug the hardware, but do not fully tighten.



Step 4

Locate the driver-side rear mounting point. Insert an M12 bolt plate into the upper mounting point. Slide a plastic bolt retainer over the threads of the bolt plate to hold the bolt plate in place.

Slide an M8 clip nut over the lower mounting hole.

Place the driver-side rear mounting bracket over the mounting points and secure the bracket to the upper mounting point using an M12 flat washer, M12 lock washer and M12 hex bolt. Secure the lower mounting point using an M8 hex bolt, M8 lock washer and M8 flat washer.

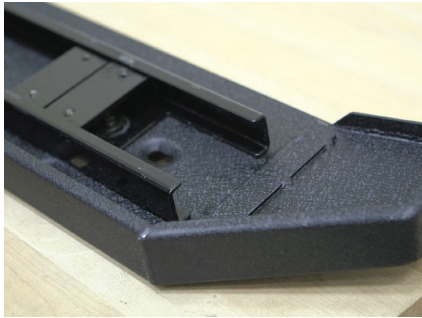
Snug the hardware, but do not fully tighten.

Note: Some vehicles may require the lower mounting hole to be drilled. Mark the location of the lower slot on the pinch weld and drill a 5/16" hole. Install the bracket using the supplied M8 clip nut, hex bolt, lock washer and flat washer, as instructed.



Step 5

Locate the short driver-side running board. Slide the two C-shaped track mounting brackets into the rail slots.



Step 6

Carefully place the running board onto the mounting brackets.

Align the C-shaped track mounting brackets with the mounting brackets on the vehicle.

Attach the C-shaped track mounting brackets to the mounting brackets using M8 hex bolts, lock washers and flat washers.

Snug the hardware, but do not fully tighten.



Step 7

Starting on the passenger side, locate the five mounting points.



Step 8

Repeat steps 2 through 4 to install the two front mounting brackets.



Step 9

Locate the middle passenger-side mounting point and remove the tape covering the mounting holes.

Slide an M8 clip nut in through the access hole and over the smaller adjacent hole.

Slide a second M8 clip nut over the lower mounting hole. Secure the mounting bracket to the vehicle.

Snug the hardware, but do not fully tighten.



Step 10a.

Repeat step 9 to install the fourth and fifth mounting brackets.

Note: On some vehicles, drilling may be required to install the middle and two rear mounting brackets.



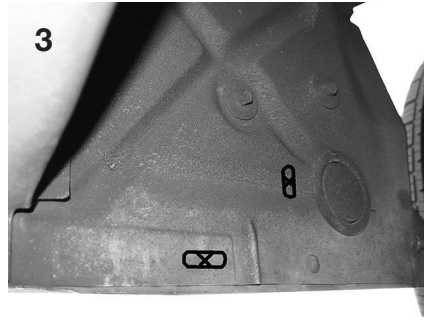
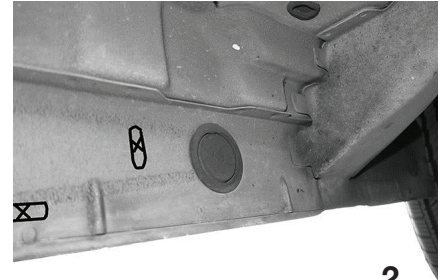
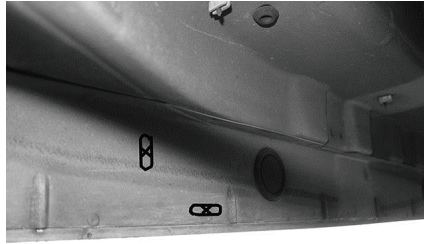
Step 10b.

If drilling is required, level the running board using the front mounting brackets as an anchor point. Hold the rear brackets in position against the side of the body panel and mark the slot locations.

Drill 7/16" holes for the top mounting location on the middle bracket and two rear brackets.

Drill 5/16" holes for the lower mounting locations through the pinch weld of the vehicle.

1. Passenger / right, middle location
2. Passenger / right, 4th location
3. Passenger / right, 5th location

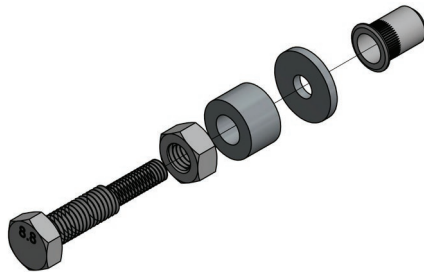


Step 10c.

Install the M8 threaded inserts in the 7/16" holes with the supplied thread set tool.

Screw the left hand nut completely onto the thread set tool and slide the metal spacer onto the larger thread until it rests against the left hand nut.

Place an M8 flat washer on the small thread followed by an M8 threaded insert. Thread the M8 insert onto the small end of the tool until it seats the washer against the shoulder between the M10 and M8 threads.



Step 10d.

Place the M8 insert into the 7/16" drilled hole. Using an open-ended wrench, hold the left hand nut on the thread set tool.

With a socket, turn the head of the bolt clockwise until the left hand nut and metal spacer contact the M8 washer and M8 insert. After tension is felt, carefully compress the insert in the hole while applying slight pressure to keep it seated (approximately two full rotations).



WARNING: Over tightening the insert may damage to the thread set tool and / or vehicle rocker panel. Only compress the M8 insert enough to seat it in the hole without rotating.

Follow steps 8 through 10 to complete the installation to the two remaining rear passenger-side brackets.

An M8 clip nut will no longer be required for the top mounting location on the rear brackets.

Step 11

Locate the long passenger-side running board. Slide five C-shaped track mounting brackets into the rail slots.

Repeat steps 6 and 7 to secure the running board to the mounting brackets.

Snug the hardware, but do not fully tighten.



Step 12

At this time, adjust the running board to the desired location.

With the running board in position, it is recommended to tighten all brackets to the vehicle first, followed by the running board connections.

For recommended torque specifications, refer to the table on page one.



Step 14

Congratulations on the installation of your new ARIES RidgeStep™ 6 1/2" running boards.

With the running boards installed, periodic inspections should be performed to ensure all mounting hardware remains tight.

To protect your investment, see the 'Notes and Maintenance' section on the first page of this instruction manual.

