

Installation Instructions

Parts List

| | |
|----|--|
| 1 | Driver / left, running board |
| 1 | Passenger / right, running board |
| 6 | Support bracket, universal |
| 2 | Driver / left, VersaTrac™ mounting bracket |
| 4 | Passenger / right, VersaTrac™ mounting bracket |
| 24 | Hex bolt, M8 - 1.25 x 30mm (S) |
| 48 | Flat washer, M8 x 24mm x 2.2mm (S) |
| 24 | Lock washer, M8 (S) |
| 24 | Hex nut, M8 (S) |
| 12 | Hex bolt, M8 (B) |
| 12 | Flat washer, M8 (B) |
| 12 | Lock washer, M8 (B) |
| 6 | Bolt plate, M10 - 1.50 x 30mm |
| 6 | Flat washer, M10 x 24mm x 2.2mm |
| 6 | Lock washer, M10 |
| 6 | Hex nut, M10 - 1.50 |
| 6 | Plastic retainer, M10 |

(S) = Silver hardware
(B) = Black hardware

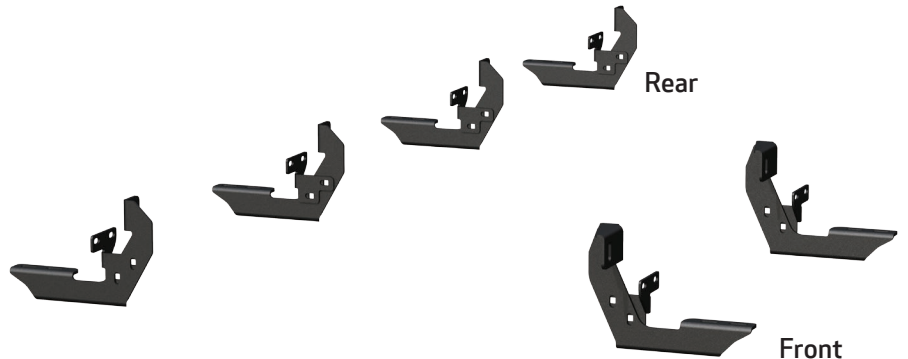
Tools Required

| | |
|----------------------|--------------|
| Ratchet | Socket, 13mm |
| Torque wrench | Socket, 17mm |
| Drill | Level |
| Drill bit, 3/8" | Marker |
| Flathead screwdriver | -- |

Level of Difficulty

Easy

Product Image



RidgeStep™



Notes and Maintenance

Before you begin installation, read all instructions thoroughly.

Proper tools will improve the quality of installation and reduce the time required.

For black finishes, mild soap may be used to clean the product.

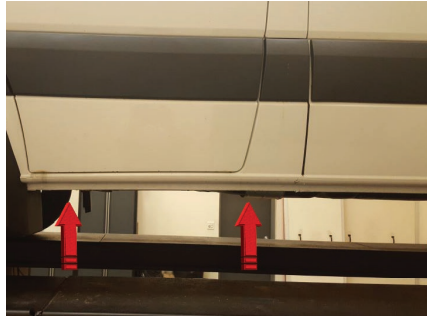
Refer to the table to the below when securing hardware during the installation process to help prevent damage to the product or vehicle.

Torque Specifications

| METRIC | | SAE | |
|----------|-------------|------------|-------------|
| M6 bolt | 3 ft.-lbs. | 1/4" bolt | 3 ft.-lbs. |
| M8 bolt | 7 ft.-lbs. | 5/16" bolt | 7 ft.-lbs. |
| M10 bolt | 16 ft.-lbs. | 3/8" bolt | 16 ft.-lbs. |
| M12 bolt | 28 ft.-lbs. | 7/16" bolt | 20 ft.-lbs. |
| -- | -- | 1/2" bolt | 28 ft.-lbs. |

Step 1

Starting on the driver side, locate the two mounting tabs along the bottom edge of the vehicle body.



Step 2

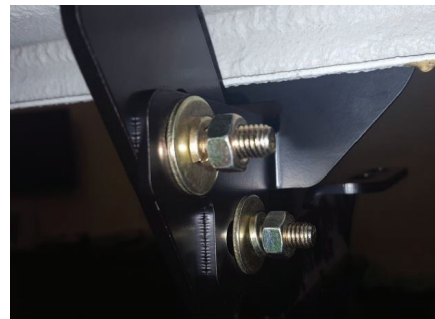
Starting with the front driver-side mounting location, insert a bolt plate and plastic bolt retainer.



Step 3

Attach the bracket to the bolt plate with a silver M8 flat washer, M8 lock washer and M8 hex nut.

Attach a support bracket to the passenger front bracket with two silver M8 hex bolts, four flat washers, two washers and two hex nuts.



Step 4

Align the support bracket on the pinch weld. With a marker, place a dot in the center of the mounting slots.

Using a 1/16" drill bit, drill a pilot hole in each of the marked spots followed by the full sized 3/8" holes in each location.

Warning: Do not drill through the welds in the pinch weld. Slide the bracket forward or rearward to move the slots away from the factory spot welds. Do not drill into or through the outer plastic rocker panel cover.

Attach the bracket with two M8 hex bolts, two M8 lock washers, four flat washers and two hex nuts.

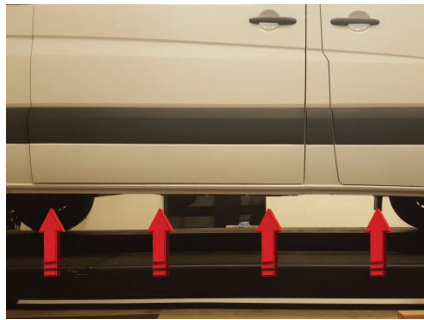
Repeat this process to install the driver-side front rear bracket.



Step 5

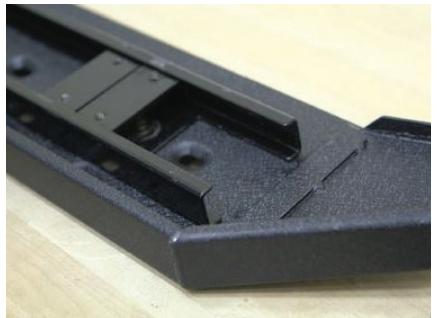
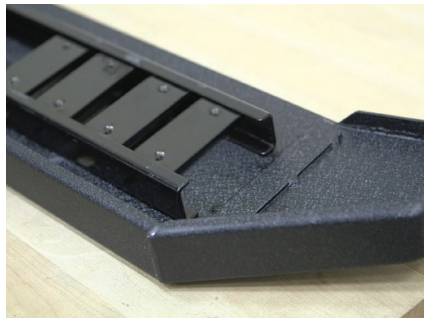
Locate the four passenger-side mounting locations on the underside of the van.

Repeat steps 2 through 4 on the passenger side for each mounting location.



Step 6

Slide the four C-shaped track mounting brackets into the rail slots on the passenger side board and two on the driver side board.

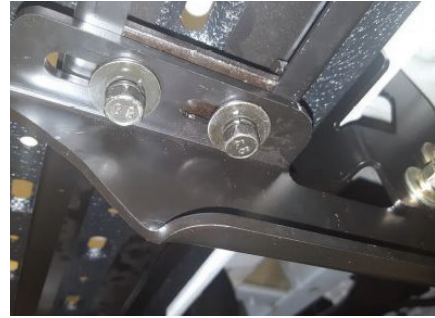
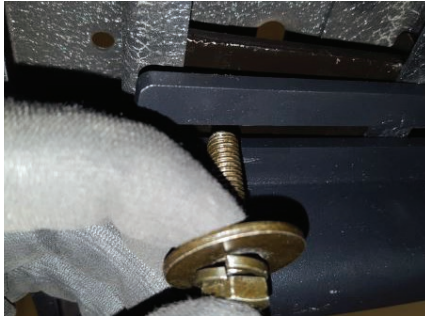


Step 7

Carefully place the running board onto the mounting brackets.

Align the C-shaped track mounting brackets with the mounting brackets on the vehicle.

Attach the C-shaped track mounting brackets to the vehicle mounting brackets using M8 hex bolts, lock washers and flat washers.



Step 8

At this time, adjust the running board to the desired location.

With the running board in position, it is recommended to tighten all brackets to the vehicle first, followed by the running board connections.

For recommended torque specifications, refer to the table on page one.



Step 9

Congratulations on the installation of your new ARIES RidgeStep™ running boards.

With the running boards installed, periodic inspections should be performed to ensure all mounting hardware remains tight.

To protect your investment, see the 'Notes and Maintenance' section on the first page of this instruction manual.

