

Parts List

1	Driver / left side running board
1	Passenger / right side running board
4	Mounting bracket, universal
4	Mounting bracket, drill (2014 - present)
1	Mounting bracket, driver side, front (2008 - 2013)
1	Mounting bracket, passenger side, front (2008 - 2013)
2	Mounting bracket, middle (2008 - 2013)
1	Driver / left, mounting bracket, rear
1	Passenger / right, mounting bracket, rear
6	Board space bracket
2	Hex bolt, M6 - 1.00mm x 25mm
2	Flat washer, M6
2	Lock washer, M6
2	Handle nut, M6
16	Hex bolt, M8 - 1.25mm x 30mm
4	Bolt plate, M8 - 1.25mm x 40mm
32	Flat washer, M8
16	Lock washer, M8
16	Hex nut, M8 - 1.25mm
2	Hex bolt, M10 - 1.5mm x 30mm
2	Flat washer, M10
2	Lock washer, M10
2	Bolt and nut plate, M12 - 1.75mm x 43mm
2	Flat washer, M12
2	Lock washer, M12
2	Hex nut, M12 - 1.75mm

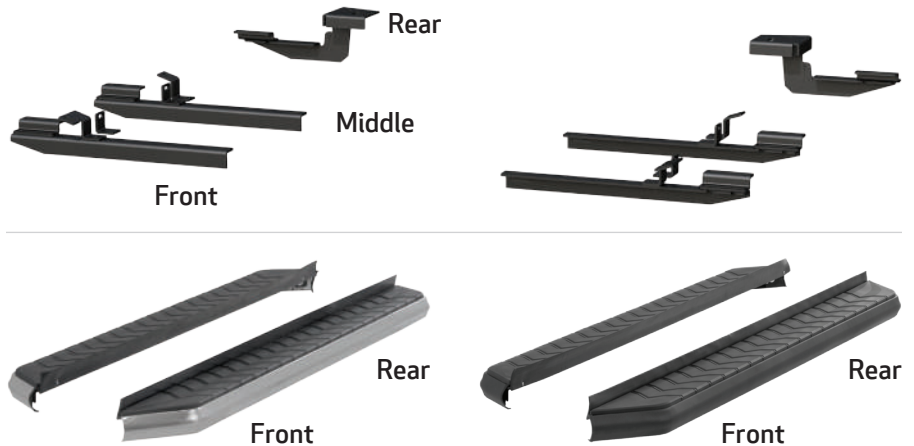
Tools Required

Torque wrench	Socket, 13mm
Drill bit, 3/8"	Socket, 16mm
Flathead screwdriver	Socket, 18mm
Utility knife	Wrench, 13mm

Level of Difficulty

Easy

Product Image



Notes and Maintenance

Before you begin installation, read all instructions thoroughly.

Proper tools will improve the quality of installation and reduce the time required.

For stainless steel, polish may be used to clear small scratches and scuffs on the finish. Mild soap may be used also to clean the product.

For black finishes, mild soap may be used to clean the product.

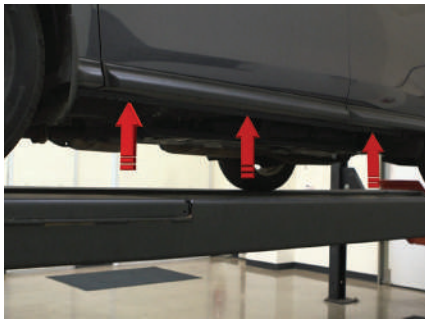
Refer to the table to the below when securing hardware during the installation process to help prevent damage to the product or vehicle.

Torque Specifications

METRIC		SAE	
M6 bolt	3 ft.-lbs.	1/4" bolt	3 ft.-lbs.
M8 bolt	7 ft.-lbs.	5/16" bolt	7 ft.-lbs.
M10 bolt	16 ft.-lbs.	3/8" bolt	16 ft.-lbs.
M12 bolt	28 ft.-lbs.	7/16" bolt	20 ft.-lbs.
--	--	1/2" bolt	28 ft.-lbs.

Step 1

Starting on the driver side, locate the three mounting points underneath the vehicle.



Step 2 (Skip to Step 8 for model years 2008 - 2013)

Locate the front mounting point.

Attach a drill mounting bracket to one of the universal mounting brackets using one M8 hex bolt, two M8 flat washers, one M8 lock washer and one M8 hex nut.

Hold the front mounting bracket up to the vehicle. Using a marker, mark the hole location on the vehicle pinch seam.



Step 3

Using a 3/8" drill bit, drill a hole through the pinch seam.

Align the second mounting point with the mounting hole in the pinch seam and secure using one M8 hex bolt, two M8 flat washers, one M8 lock washer and one M8 hex nut.

Note: Some cutting of the plastic trim may be required.



Step 4

To finish installing the front mounting bracket, remove the factory hex bolt towards the center of the vehicle.

Align the rear mounting bracket with the rear mounting point and use the previously removed factory hex bolt to finish securing the front mounting bracket.

Snug the hardware. Do not fully tighten.



Step 5

Repeat steps 2 and step 3 to install the front mounting point on the middle mounting bracket.

Locate the rear mounting point for the middle mounting bracket, insert an M6 handle nut into the mounting hole. Secure the rear mounting point using an M6 hex bolt, M6 lock washer and M6 flat washer.

Snug the hardware. Do not fully tighten.



Step 6

Locate the rear mounting point.

Insert a M12 bolt plate in through the large slot and align the M10 nut over the smaller mounting hole.



Step 7

Place the rear mounting bracket up to the vehicle.

Secure the rear mounting bracket to the vehicle using one M12 flat washer, one M12 lock washer and one M12 hex nut on the bolt and one M10 hex bolt, one M10 lock washer and one M10 flat washer on the weld nut.



Step 8

Starting on the driver-side front mounting point, use a flathead screwdriver to remove the hole plug on the outside of the vehicle and insert an M8 bolt plate and plastic bolt retainer to hold the bolt in place.

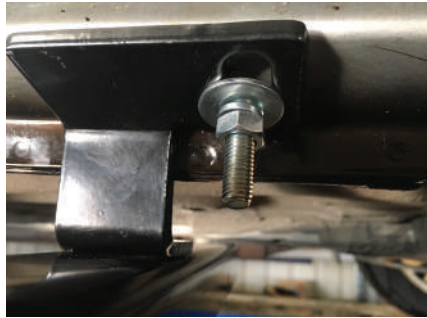


Step 9

Secure the driver side front mounting bracket to the vehicle using an M8 flat washer, M8 lock washer and M8 hex nut.

Repeat step 4 to finish securing the front mounting bracket.

Snug the hardware. Do not fully tighten.



Step 10

Attach the driver-side middle top bracket to a universal mounting bracket.

Repeat steps 8 and 9 to attach the middle top mounting bracket.

Repeat step 5 to finish securing the middle mounting bracket.



Step 11

Repeat steps 6 and 7 to install the rear mounting bracket.

Snug the hardware. Do not fully tighten.



Step 12

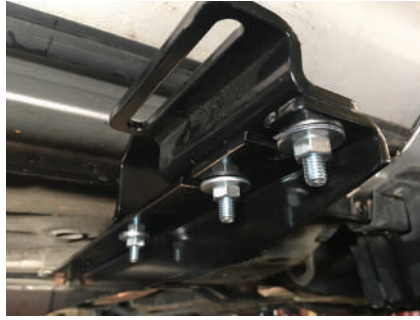
2008 - 2013

2014 - Present

For 2008 - 2013 models, place a running board spacer bracket onto each of the mounting brackets.

Secure the spacer brackets to the mounting brackets using two M8 hex bolts, four M8 flat washers, two M8 lock washers and two M8 hex nuts for each mounting bracket.

Note: 2014 - present models do not need a spacer bracket.

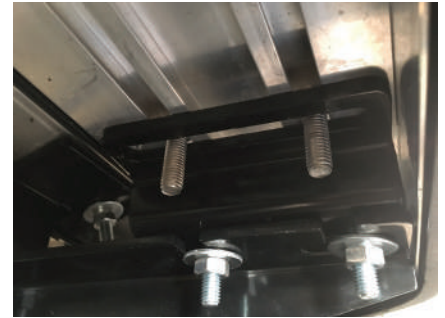
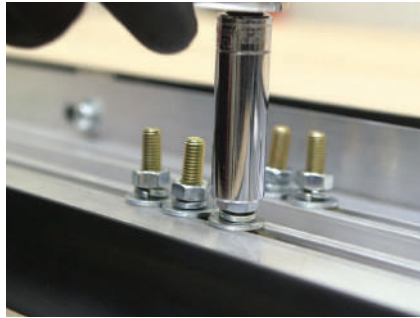


Step 13

2008 - 2013 model shown

Remove the M8 nuts, M8 lock washers and M8 flat washers from the running board.

Place the running board onto the brackets and align the M8 bolts with the slots in the brackets on the vehicle.



Step 14

2008 - 2013 model shown

Attach the running board to the brackets using six M8 bolts, lock washers, flat washers and hex nuts.

Snug the hardware. Do not fully tighten.

Adjust and level the running board, centering it between the front and rear wheel wells.

With the running board in position, it is recommended to tighten all brackets to the vehicle first, followed by the running board connections.



Step 15

Repeat steps 1 through 14 on the passenger side of the vehicle.

Congratulations on the installation of your new ARIES AeroTread™ running boards.

With the running boards installed, periodic inspections should be performed to ensure all mounting hardware remains tight.

To protect your investment, see the 'Notes and Maintenance' section on the first page of this instruction manual.

