

Parts List

1	Driver / left running board
1	Passenger / right running board
2	Mounting bracket, front
2	Mounting bracket, middle
2	Mounting bracket, rear
12	Hex bolt, 6mm
24	Flat washer, 6mm
12	Lock washer, 6mm
12	Hex nut, 6mm
6	Bolt plate, 10mm
6	Flat washer, 10mm
6	Lock washer, 10mm
6	Hex nut, 10mm
6	Plastic bolt retainer

Additional Hardware*

12	Hex bolt, 8mm
12	Flat washer, 8mm
12	Lock washer, 8mm
12	Hex nut, 8mm

* Running boards are supplied with additional hardware. Quantities listed are in addition to the standard supplied hardware.

Tools Required

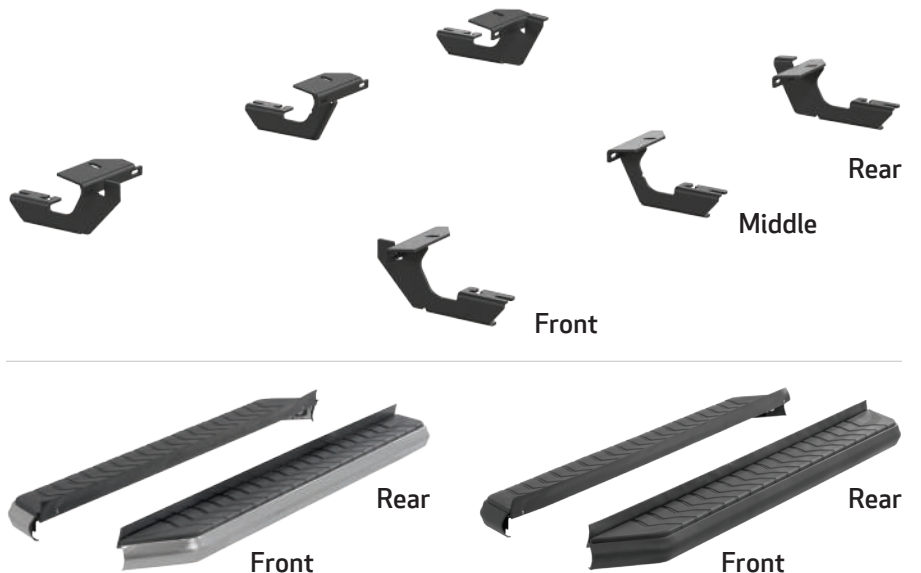
Torque wrench	Extension
Socket, 10mm	Level
Socket, 16mm	Flathead screwdriver
Wrench, 10mm	



Level of Difficulty

Easy

Product Image



Notes and Maintenance

Before you begin installation, read all instructions thoroughly.

Proper tools will improve the quality of installation and reduce the time required.

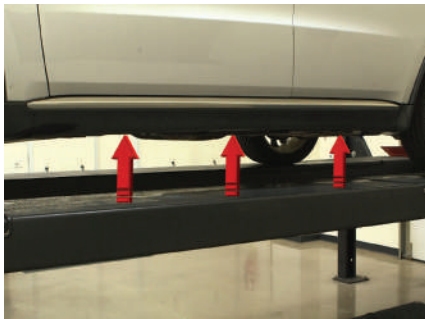
For stainless steel, polish may be used to clear small scratches and scuffs on the finish. Mild soap may be used also to clean the product.

For black finishes, mild soap may be used to clean the product.

Step 1

Starting on the driver side, locate the three mounting locations underneath the vehicle.

Note: Each bracket is specific to a mounting location. Reference page 1 product image for correct locations.

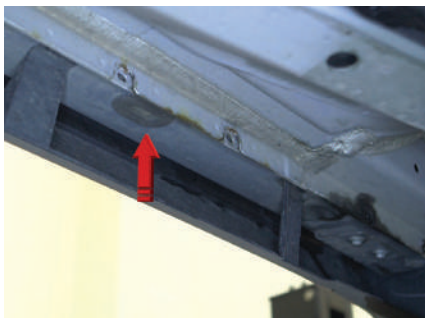


Step 2

Locate the driver-side front mounting tab and remove the hole plug. Insert a 10mm bolt plate into the opening. Slide a plastic bolt retainer over the the thread of the bolt to hold the bolt in place.

Place the front mounting bracket onto the vehicle and secure with a 10mm hex nut, 10mm lock washer and 10mm flat washer.

Snug the hardware, but do not fully tighten.



Step 3

Finish securing the front mounting bracket by inserting a 6mm hex bolt and 6mm flat washer through the outside of the second and third mounting holes and securing with a 6mm flat washer, 6mm lock washer and 6mm hex nut on the inside of the bracket.

Snug the hardware, but do not fully tighten.



Step 4

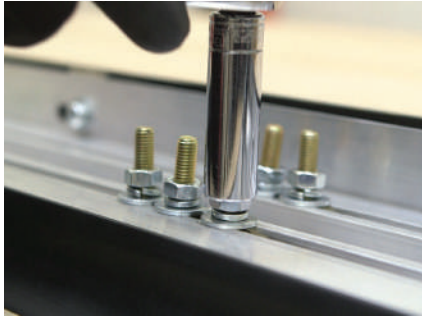
Repeat steps 2 and 3 to install the middle and rear mounting brackets.



Step 5

Remove the 8mm nuts, 8mm lock washers and 8mm flat washers from the running board.

Place the running board onto the brackets and align the 8mm bolts with the slots in the brackets on the vehicle.



Step 6

Attach the running board to the brackets using six 8mm bolts, six 8mm lock washers, six 8mm flat washers and six 8mm nuts.

Snug the hardware, but do not fully tighten.



Step 7

Adjust and level the running board, centering it between the front and rear wheel wells.

With the running board in position, it is recommended to tighten all brackets to the vehicle first, followed by the running board connections.



Step 8

Repeat steps 1 through 7 on the passenger side of the vehicle.

Congratulations on the installation of your brand new ARIES AeroTread™ running boards.

With the running boards installed, periodic inspections should be performed to ensure all mounting hardware remains tight.

To protect your investment, see the 'Notes and Maintenance' section on the first page of this instruction manual.

