

### Parts List

1	Driver / left running board
1	Passenger / right running board
2	Mounting bracket, front
2	Mounting bracket, middle
2	Mounting bracket, rear
2	Bolt plate, 1/2", short
8	Bolt plate, 1/2", long
2	Hex bolt, 3/8"
2	Flat washer, 3/8"
2	Lock washer, 3/8"
2	Nut plate, 3/8"
10	Flat washer, 1/2"
10	Lock washer, 1/2"
10	Hex nut, 1/2"
10	Plastic bolt retainer, 12mm

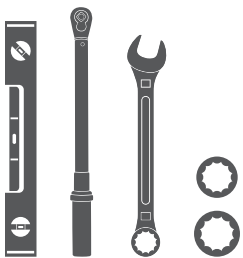
### Additional Hardware\*

12	Hex bolt, 8mm
12	Flat washer, 8mm
12	Lock washer, 8mm
12	Hex nut, 8mm

\* Running boards are supplied with additional hardware. Quantities listed are in addition to the standard supplied hardware.

### Tools Required

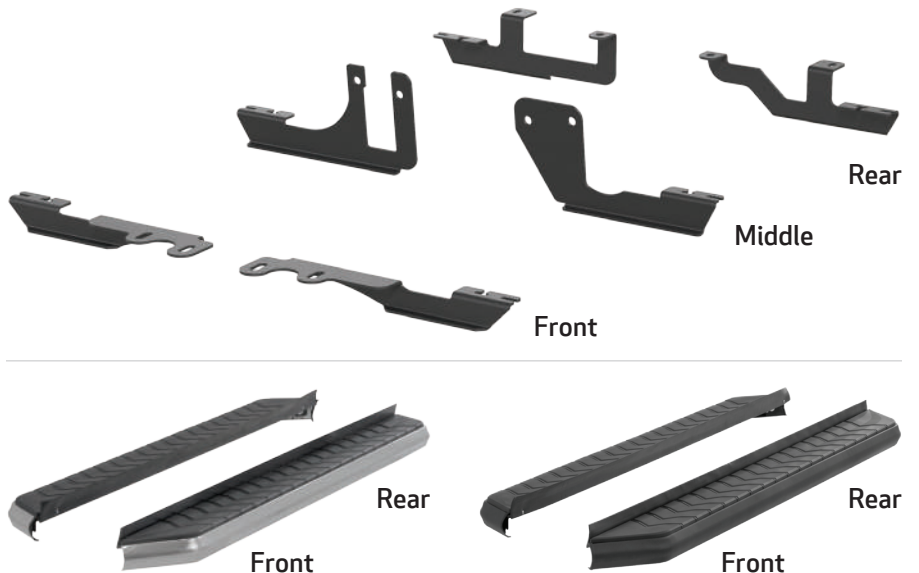
Torque wrench	Socket, 1/2"
Extension	Socket, 3/8"
Level	Wrench, 1/2"



### Level of Difficulty

Easy

### Product Image



### Notes and Maintenance

Before you begin installation, read all instructions thoroughly.

Proper tools will improve the quality of installation and reduce the time required.

For stainless steel, polish may be used to clear small scratches and scuffs on the finish. Mild soap may be used also to clean the product.

For black finishes, mild soap may be used to clean the product.

### Step 1

Starting on the driver side, locate the three mounting locations underneath the vehicle.

**Note:** Each bracket is specific to a mounting location. Reference page 1 product image for correct locations.



### Step 2

Locate the driver-side front mounting tab. Insert a long, 1/2" bolt plate into each opening. Slide a plastic bolt retainer over the thread of the bolt to hold the bolt in place.



### Step 3

Place the driver-side front mounting bracket onto the vehicle and secure with two 1/2" flat washers, two 1/2" lock washers and two 1/2" hex nuts.

Snug the hardware, but do not fully tighten.



### Step 4

Locate the driver-side middle mounting tab. Insert a long, 1/2" bolt plate into each opening. Slide a plastic bolt retainer over the thread of the bolt to hold the bolt in place.



### Step 5

Place the driver-side middle mounting bracket onto the vehicle and secure with two 1/2" flat washers, two 1/2" lock washers and two 1/2" hex nuts.

Snug the hardware, but do not fully tighten.



### Step 6

Locate the driver-side rear mounting tab. Insert a short, 1/2" bolt plate into the opening. Slide a plastic bolt retainer over the thread of the bolt to hold the bolt in place.

Insert a 3/8" nut plate into the mounting tab in the rocker panel.



### Step 7

Place the driver-side rear mounting bracket onto the vehicle and secure with a 1/2" flat washer, 1/2" lock washer and 1/2" hex nut on the stud of the bolt plate. Secure the nut plate with a 3/8" hex bolt, 3/8" lock washer and 3/8" flat washer.

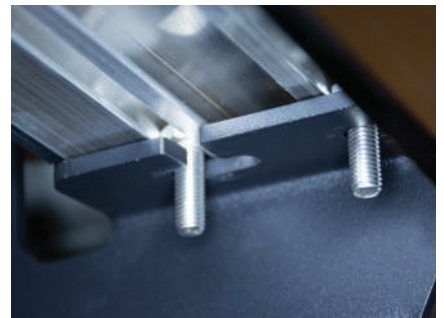
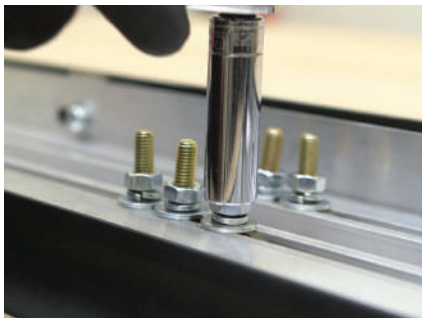
Snug the hardware, but do not fully tighten.



### Step 8

Remove the 8mm nuts, 8mm lock washers and 8mm flat washers from the running board.

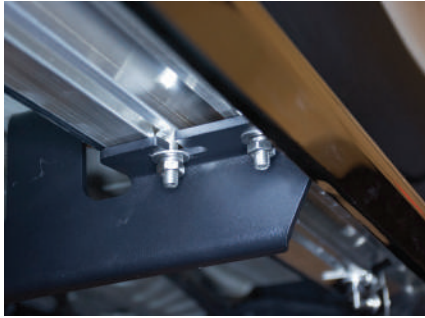
Place the running board onto the brackets and align the 8mm bolts with the slots in the brackets on the vehicle.



### Step 9

Attach the running board to the brackets using six 8mm bolts, lock washers, flat washers and nuts.

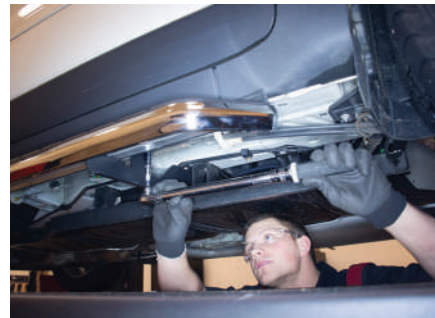
Snug the hardware, but do not fully tighten.



### Step 10

Adjust and level the running board, centering it between the front and rear wheel wells.

With the running board in position, it is recommended to tighten all brackets to the vehicle first, followed by the running board connections.



### Step 11

Repeat steps 1 through 10 on the passenger side of the vehicle.

Congratulations on the installation of your brand new ARIES AeroTread™ running boards.

With the running boards installed, periodic inspections should be performed to ensure all mounting hardware remains tight.

To protect your investment, see the 'Notes and Maintenance' section on the first page of this instruction manual.

