

Parts List

| | |
|---|---------------------------------|
| 1 | Driver / left running board |
| 1 | Passenger / right running board |
| 2 | Mounting bracket, front |
| 2 | Mounting bracket, middle |
| 2 | Mounting bracket, rear |
| 8 | T-bolt, 50mm tab |
| 8 | Flat washer, 10mm |
| 8 | Lock washer, 10mm |
| 8 | Hex nut, 10mm |
| 8 | Plastic bolt retainer |

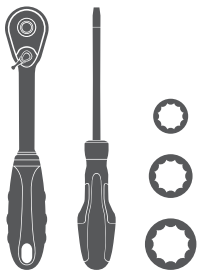
Additional Hardware*

| | |
|----|------------------|
| 12 | Hex bolt, 8mm |
| 12 | Flat washer, 8mm |
| 12 | Lock washer, 8mm |
| 12 | Hex nut, 8mm |

* Running boards are supplied with additional hardware. Quantities listed are in addition to the standard supplied hardware.

Tools Required

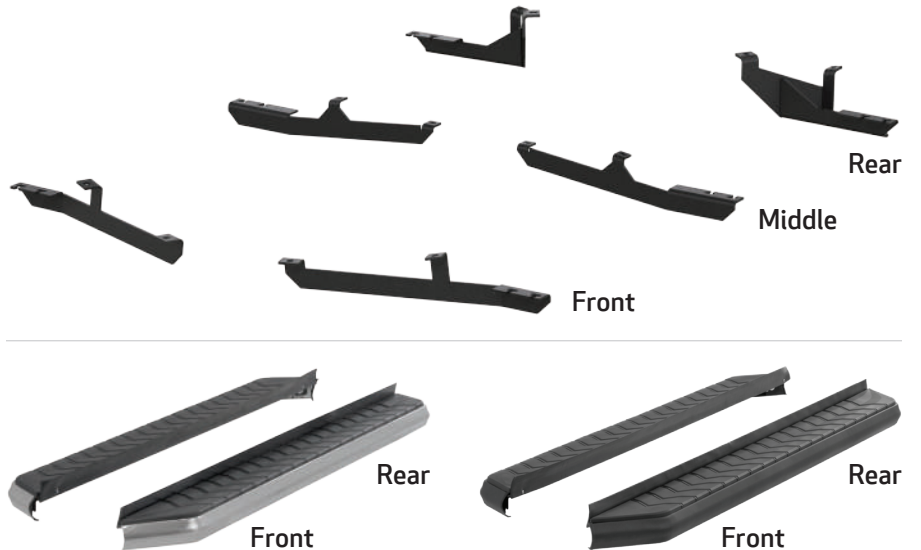
| | |
|----------------------|--------------|
| Ratchet | Socket, 13mm |
| Socket, 10mm | Socket, 17mm |
| Flathead screwdriver | |



Level of Difficulty

Easy

Product Image



Notes and Maintenance

Before you begin installation, read all instructions thoroughly.

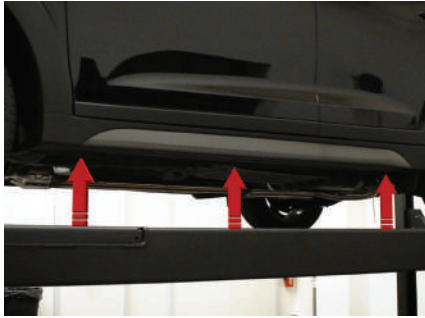
Proper tools will improve the quality of installation and reduce the time required.

For stainless steel, polish may be used to clear small scratches and scuffs on the finish. Mild soap may be used also to clean the product.

For black finishes, mild soap may be used to clean the product.

Step 1

Starting on the driver side, locate the three mounting locations on the inside of the rocker panel. Locate the front bracket for the driver side.



Step 2

Locate the hole plugs on the front driver-side rocker panel and on the frame of the vehicle. Remove them with a flathead screwdriver.



Step 3

Place a 50mm tab T-bolt into the round hole in the vehicle frame and rocker panel. Slide a plastic bolt retainer over the threads of each bolt to hold the bolts in place.



Step 4

Place the front driver-side bracket onto the vehicle and secure with two 10mm hex nuts, two 10 mm lock washers and two 10mm flat washers.

Snug the hardware, but do not fully tighten.



Step 5

Remove the two hex bolts holding the shroud to the vehicle.

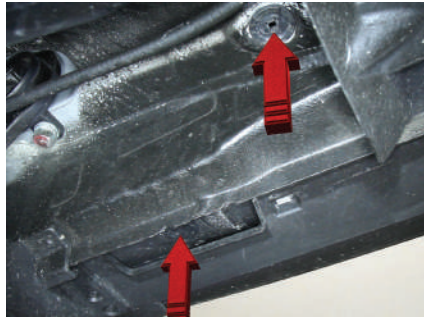
Place the middle bracket onto the vehicle and secure it using the two previously removed hex bolts.



Step 6

Remove the two hole plugs along the bottom edge of the vehicle and on the frame.

Place a 50mm tab T-bolt into the round hole in the vehicle frame and rocker panel. Slide a plastic bolt retainer over the threads of each bolt to hold the bolts in place.



Step 7

Place the rear bracket onto the vehicle and secure with two 10mm hex nuts, two 10mm lock washers and two 10mm flat washers.

Snug the hardware, but do not fully tighten.



Step 8

Remove the 8mm nuts, 8mm lock washers and 8mm flat washers from the driver-side running board.

Place the running board onto the brackets and align the 8mm bolts with the slots in the brackets on the vehicle.



Step 9

Attach the running board to the brackets using six 8mm bolts, six 8mm lock washers, six 8mm flat washers and six 8mm nuts.

Snug the hardware, but do not fully tighten.



Step 10

Adjust and level the running board, centering it between the front and rear wheel wells.

With the running board in position, it is recommended that all brackets first be tightened to the vehicle, followed by the running board connections.



Step 11

Repeat steps 1 through 10 on the passenger side of the vehicle.

Congratulations on the installation of your brand new ARIES AeroTread™ running boards.

With the running boards installed, periodic inspections should be performed to ensure all mounting hardware remains tight.

To protect your investment, see the 'Notes and Maintenance' section on the first page of this instruction manual.

