

INSTALLATION MANUAL

1110313

Level of Difficulty

Easy

Parts List

1	Driver / left bracket
1	Passenger / right bracket
2	Spacer, 5/8"
4	Spacer, 1/2"
4	Button head screw, M6
4	Flat washer, M6
4	Lock washer, M6
2	Button head screw, M8
2	Flat washer, M8
4	Lock washer, M8
4	Carriage bolt, 1/4"
4	Flat washer, 1/4"
4	Nylock nut, 1/4"

Tools Required

Torque wrench	--
---------------	----

Torque Specifications

	Metric		
	M6 bolt	3 ft-lbs.	
M8 bolt	7 ft-lbs.		
M10 bolt	16 ft-lbs.		
M12 bolt	28 ft-lbs.		
SAE	1/4" bolt	3 ft-lbs.	
	5/16" bolt	7 ft-lbs.	
	3/8" bolt	16 ft-lbs.	
	7/16" bolt	20 ft-lbs.	
	1/2" bolt	28 ft-lbs.	

Use above torque setting unless otherwise noted

Product Photo



NOTICE

Before you begin installation, read all instructions thoroughly.

Proper tools will improve the quality of installation and reduce the time required.

To help prevent damage to the product or vehicle, refer to the specified torque specifications when securing hardware during the installation process.

Maintenance

To protect the product, wax after installing. Regular waxing is recommended to add a protective layer over the finish. Do not use any type of polish or wax that may contain abrasives that could damage the finish.

For polished, gloss and other smooth finishes, polish may be used to clear small scratches and scuffs on the finish.

Mild automotive detergent may be used to clean the product. Do not use dish detergent, abrasive cleaners, abrasive pads, wire brushes or other similar products that may damage the finish.

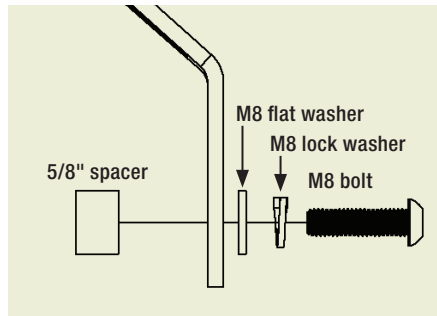
Step 1

Starting on the driver side, locate the mounting points on the vehicle. Remove any existing hardware.



Step 2

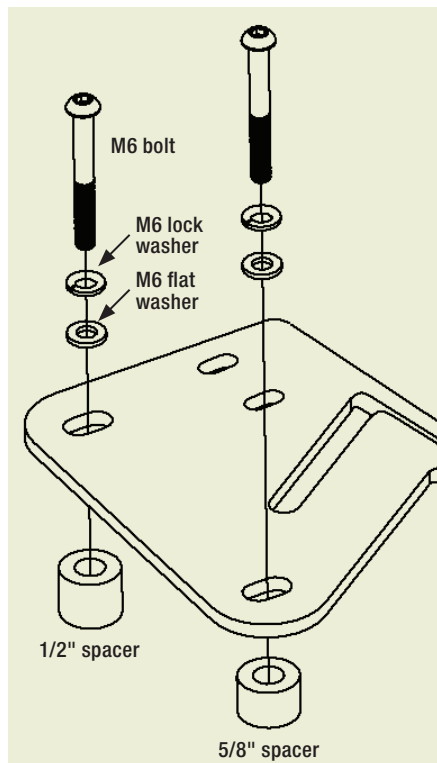
On the side attachment, use a 5/8" spacer, an M8 bolt, lock washer and flat washer to secure the bracket to the vehicle.



Step 3

On the top attachment, use a 5/8" spacer, a 1/2" spacer, two M6 bolts, lock washers and flat washers to secure the bracket to the vehicle.

Repeat steps 2 through 3 on the passenger side of the vehicle.



Step 4

To install a 50" LED light bar (part# 1501278 - sold separately), use two 1/4" carriage bolts, flat washers and nylock nuts per side at each mounting location.



Step 5

Congratulations on the installation of your new ARIES LED light bar brackets.

With the brackets installed, periodic inspections should be performed to ensure all mounting hardware remains tight.

To protect your investment, see the 'Notes and Maintenance' section on page one.



Parts List

1	LED light bar, 50"
1	Mounting bracket, left
1	Mounting bracket, right
1	Wiring harness
2	Security screw, M6 - 1.0 x 25mm
2	Rubber spacer, M6
2	Flat washer, M6
1	Security screw L-wrench
1	30 amp fuse, pre-installed

Level of Difficulty

Easy

Product Image



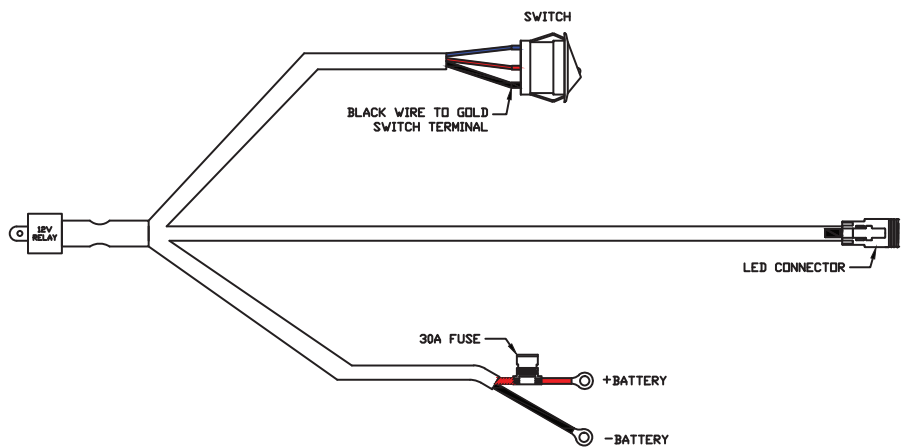
Step 1

Mount the LED light in the desired location with a rubber spacer between the mounting surface and each bracket.

Note: If this light bar is being used with a 24V system, the relay will need to be replaced with a 24V unit.

Disconnect the supplied switch from the wiring harness and install in the desired location.

Wiring Diagram



Step 2

Once the LED light bar and switch are installed, route the wiring harness to the light. Insert the male plug on the wiring harness into the female socket on the LED light. Reconnect the blue, red and black spade connectors to the switch (see the wiring diagram).

Notes and Maintenance

Before you begin installation, read all instructions thoroughly.

Periodic inspection of all wires and connections should be performed to ensure there is no visible damage or loose connections.

WARNING: Improper electrical installation may damage electronic components resulting in personal injury, property or equipment damage. Damaged caused by incorrect installation is not covered by warranty. Installation should only be performed by qualified personnel with a solid understanding of electrical systems.

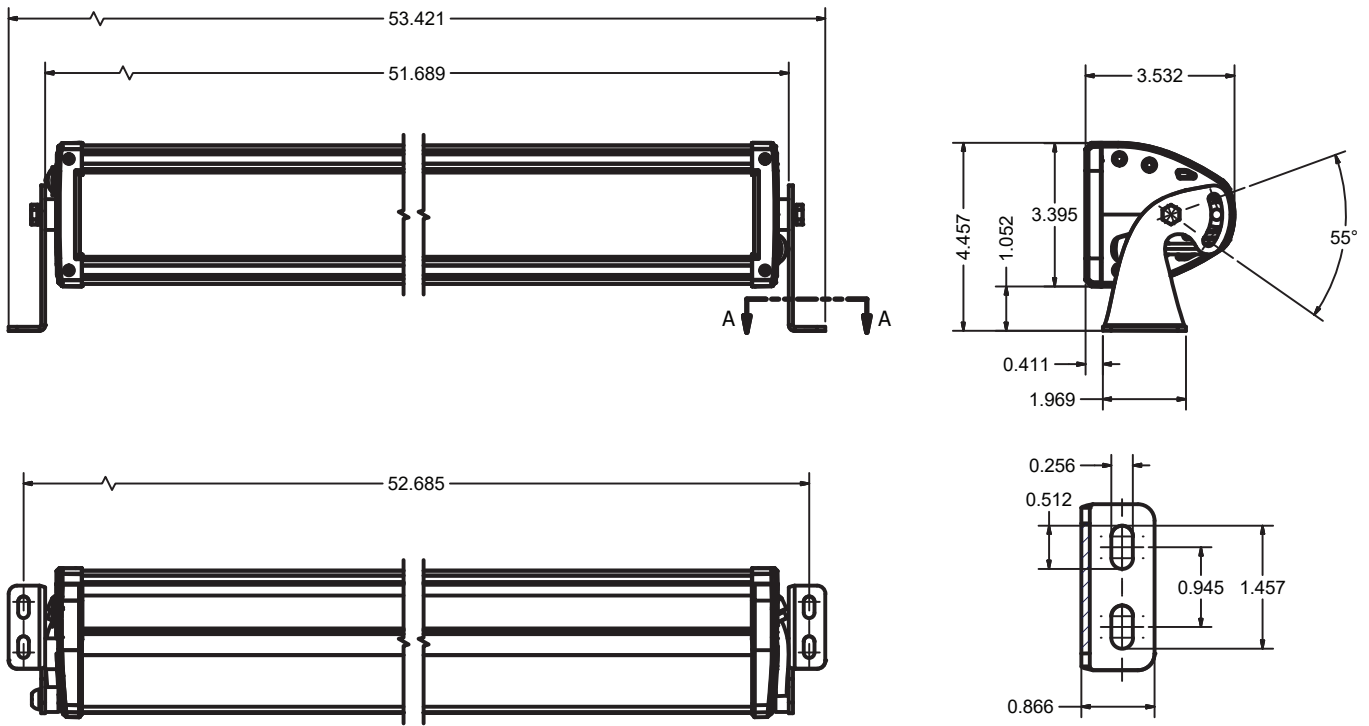
Step 3

Connect the red fused wire with the ring terminal to the positive (+) battery post. Connect the black wire ring terminal to the negative (-) battery post or other suitable vehicle grounding point.

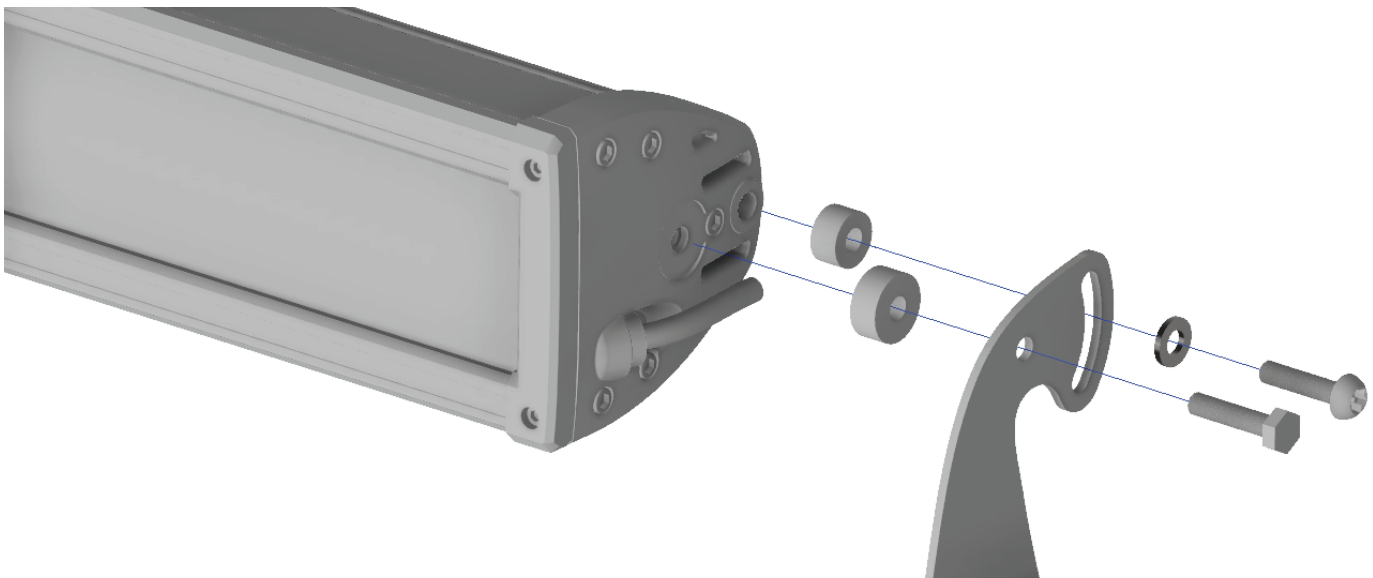
Step 4

Mount the provided relay to the vehicle and secure all wires with zip ties away from moving parts to avoid damage. Test the light to ensure proper function.

Basic Dimensions



Mounting Illustration



Rely only on high-grade off-road lights offered on our virtual shelves.