

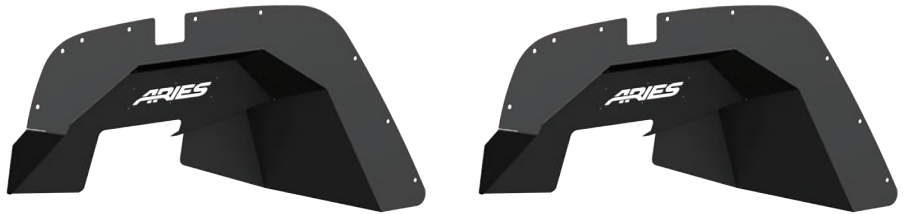
Parts List

1	Driver / left inner fender liner
1	Passenger / right inner fender liner
4	Z-hanger brackets
1	Thread-set bolt, M6
1	Thread-set washer
1	Thread-set spacer
22	Hex bolt, M6 x 25mm
22	Flat washer, M6
22	Lock washer, M6
18	Rivet nut, M6
1	Left hand-nut, M8

Level of Difficulty

Moderate

Product Image



Tools Required

Ratchet	Socket, 10mm
Wrench, 13mm	Socket, 13mm
Drill	Trim removal tool
Drill bit, 25/64" or 10mm	--

Notes and Maintenance

Before you begin installation, read all instructions thoroughly.

Proper tools will improve the quality of installation and reduce the time required.

For black finishes, mild soap may be used to clean the product.

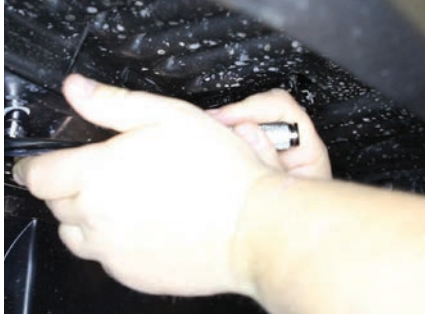
Refer to the table to the left when securing hardware during the installation process to help prevent damage to the product or vehicle.

Torque Specifications

	METRIC	SAE
M6 bolt	3 ft.-lbs.	
M8 bolt	7 ft.-lbs.	
M10 bolt	16 ft.-lbs.	
M12 bolt	28 ft.-lbs.	
1/4" bolt		3 ft.-lbs.
5/16" bolt		7 ft.-lbs.
3/8" bolt		16 ft.-lbs.
7/16" bolt		20 ft.-lbs.
1/2" bolt		28 ft.-lbs.

Step 1

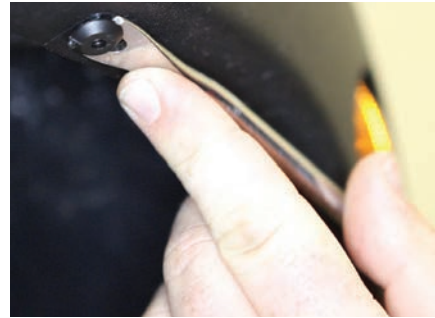
Starting with the front factory flares, remove the inner fender liner using a 10mm socket to remove all hex head bolts.



Step 2

Remove all push-in retainers. Take care not to damage the plastic inner fender liner.

Once the retainers are removed, remove the fender liner, and set it aside.



Step 3

Disconnect the side marker light.



Step 4

Remove the plastic fender flare support by removing the hex head bolts holding it in place.

You should now be able to pull the factory fender flare from the body of the Jeep.



Step 5

Using the factory metal brace to help balance the fender flare, place the ARIES fender flare or inner liner up against the body and align the mounting holes.



Step 6

Identify the matching holes from the ARIES fender flare and the original holes. Mark the locations where drilling is needed.



Step 7

Remove the flare and drill 25/64" OR 10mm holes as needed, to fit the M6 threaded metal inserts supplied with the ARIES fender flares.

Do not make the holes larger than required or the rivet nuts may fail to install.



Step 8

Screw the left-handed nut completely onto the thread-set tool. Slide the metal spacer onto the larger thread until it rests against the M8 left-hand nut.

Place an M6 flat washer on the small thread followed by an M6 rivet nut. Thread the rivet nut onto the small end of the tool until it seats the washer against the shoulder between the M6 and M8 threads.



Step 9

Insert the rivet nut into the drilled hole. Using a 13mm wrench, hold the M8 nut on the thread-set tool.

With a 13mm socket, turn the head of the bolt clockwise until the M8 nut and metal spacer contact the M6 washer and rivet nut. After tension is felt, carefully compress the rivet nut in the hole while applying slight pressure to keep it seated (approximately two full rotations).

CAUTION: Over tightening the rivet nut may damage the thread-set tool and / or vehicle panel. Only compress the rivet nut enough to seat it the hole without rotating.



Step 10

Using an M6 bolt, M6 flat washer and M6 lock washer, place two Z-hanger brackets onto the Jeep.

Snug the hardware, but do not fully tighten.



Step 11

Measure rivet nut hole locations on the Z-hanger brackets. The center-to-center distance should be approximately 7 7/16". Adjust as needed.

Tighten the two M6 bolts holding the Z-hanger brackets to the Jeep at this time.



Step 12

If a side marker light is used, the wiring harness will have to be routed and connected prior to installation of the inner fender liner.

Assistance is needed to hold the inner liner and outer fender flare in place until bolts are started.



Step 13

Using an M6 bolt, M6 flat washer, and M6 lock washer, mount the inner fender liner to the Z-hanger brackets on the Jeep.

Snug the hardware, but do not fully tighten.



Step 14

Using M6 bolts, M6 flat washers and M6 lock washers, place the outer fender flare (if used) over the inner fender liner.

Start the hardware, but do not fully tighten.

Assistance may be required to hold the fender flare and inner fender liner in place while fasteners are started.



Step 15

Using an M6 bolt, M6 flat washer, and M6 lock washer, attach the outer fender flare (if used) to the top support brace on the Jeep.

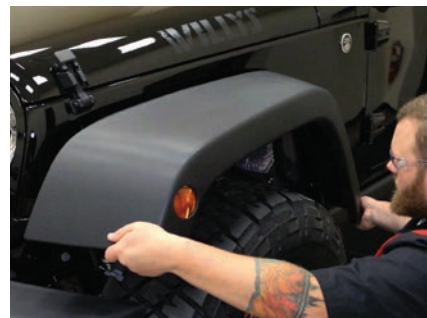
Snug the hardware, but do not fully tighten.



Step 16

Tighten down all hardware with a 10mm socket. Torque all hardware to the values specified on the first page of this manual.

Repeat this process on the driver side.



Step 17

Congratulations on the installation of your new ARIES inner fender liners.

With the fender flares and inner fender liners installed, periodic inspections should be performed to ensure all mounting hardware remains tight.

To protect your investment, see the 'Notes and Maintenance' section on the first page of this instruction manual.

