

Parts List

1	Driver / left section headache rack
1	Passenger / right section headache rack
1	Center / middle section headache rack
1	Center / middle section, mesh
2	Stake pocket clamp
8	Hex bolt, M8 - 1.25 x 25mm
8	Hex Flange Lock nut, M8 - 1.25mm
2	Hex bolt, M14 - 2.0 x 80mm
2	Flat washer, M14
2	Lock washer, M14
8	Adhesive wire ties

Level of Difficulty

Easy

Product Image



Tools Required

Ratchet	Socket, 13mm
Utility knife	Socket, 22mm
Flathead screwdriver	Open end wrench, 13mm

Torque Specifications

METRIC	Bolt Size	Torque
	M6 bolt	3 ft.-lbs.
	M8 bolt	7 ft.-lbs.
	M10 bolt	16 ft.-lbs.
	M12 bolt	28 ft.-lbs.
SAE	Bolt Size	Torque
	1/4" bolt	3 ft.-lbs.
	5/16" bolt	7 ft.-lbs.
	3/8" bolt	16 ft.-lbs.
	7/16" bolt	20 ft.-lbs.
	1/2" bolt	28 ft.-lbs.

Use above torque setting unless otherwise noted

Notes and Maintenance

Before you begin installation, read all instructions thoroughly.

Proper tools will improve the quality of installation and reduce the time required.

For black finishes, mild soap may be used to clean the product.

Refer to the table to the left when securing hardware during the installation process to help prevent damage to the product or vehicle.

Step 1

Starting on the driver-side, locate and cut out the plastic stake pocket cover. Repeat this for passenger-side stake pocket cover.

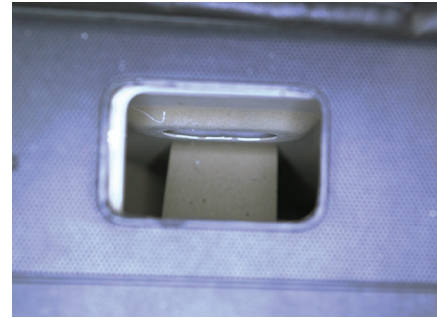
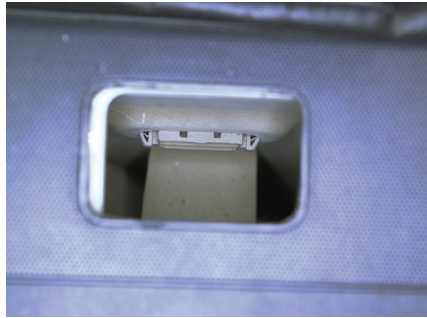
Note: Some vehicles have removable stake pocket covers and cutting is not necessary.



Step 2

Insert the flathead screwdriver into the stake pocket and push in the tab to remove the plug. Repeat for the passenger-side stake pocket plug.

Note: Not all vehicles will have a plug to remove. Removal is only necessary if it interferes with the stake pocket clamps.



Step 3

Locate the driver side, passenger side and center sections. Lay them face down on a flat surface. Determine if you wish to install the center mesh or leave the center open.

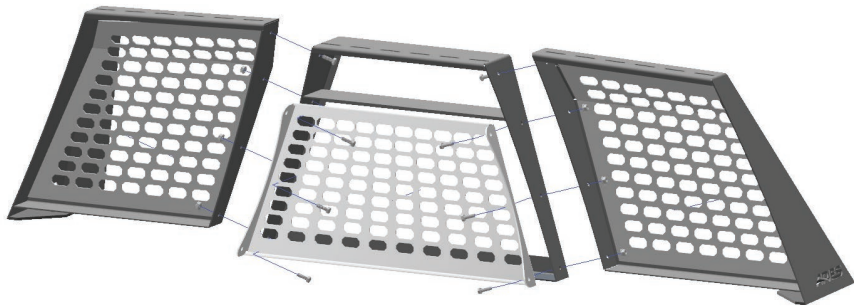
Line the four mounting holes on the outside driver and passenger-side assemblies with the four holes in each side of the center assembly (with or without the center mesh).



Step 4

Loosely assemble the headache rack using eight M8 x 25mm hex bolts and M8 hex flange lock nuts. The bolts should be inserted from the inside as shown.

With all the hardware loosely installed, ensure the assemblies are aligned properly and fully tighten the hardware to 15 ft-lbs.

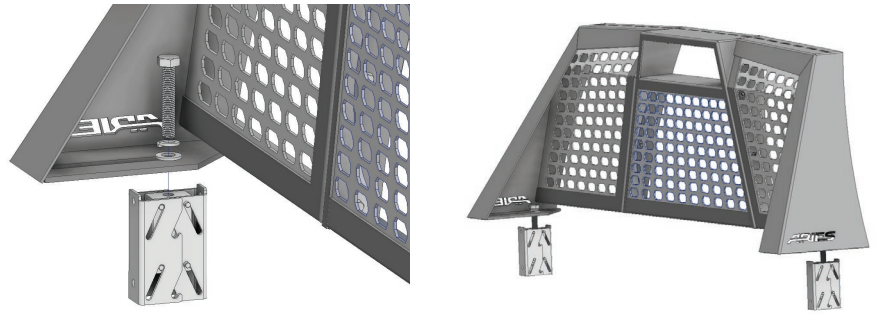


Step 5

Place the headache rack on a work table with the slotted ends hanging off the sides of the table.

Insert a M14 bolt, M14 lock washer and M14 flat washer through the slot and attach to the stake pocket clamp. The stake pocket clamp should be hanging down off the bottom of the headache rack as shown.

Repeat this process to attach the passenger-side clamp to the headache rack.

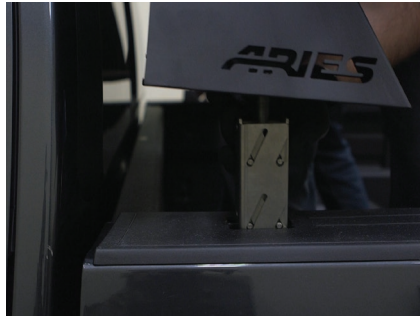


Step 6

With assistance, hold the assembled headache rack in position over the stake pockets in the truck bed rails.

Squeeze the stake pocket clamps closed to allow them to be lowered into the stake pockets.

With the clamps lowered into the stake pockets, slide the headache rack into the desired location, ensuring it is centered on the vehicle.



Step 7

With the headache rack in position, carefully tighten the M14 hex bolts. As the stake pocket clamp is tightened, it will expand in the stake pocket and pull up to the top of the bed rail. Ensure the clamp is full expanded beyond the opening in the bed rail before fully tightening. (See detail with headache rack removed for clarity.)

CAUTION: Only tighten the clamps enough to eliminate movement in the headache rack and fully compress the lock washer. Overtightening the clamps may result in damage to your bed rail and void the warranty.



Step 8

Congratulations on the installation of your new ARIES Switchback™ headache rack.

With the headache rack installed, periodic inspections should be performed to ensure all mounting hardware remains tight.

To protect your investment, see the 'Notes and Maintenance' section on the first page of this instruction manual.

