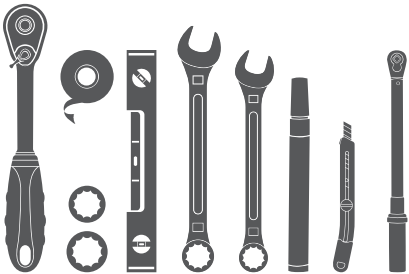


Parts List

1	Bull bar
2	Upper frame mounting bracket
1	Driver / left lower frame mounting bracket
1	Passenger / right lower frame mounting bracket
2	Button head bolt, 6mm
4	Flat washer, 6mm
2	Nylock nut, 6mm
4	Hex bolt, 8mm
4	Flat washer, 8mm
4	Lock washer, 8mm
8	Flat washer, 10mm
4	Nylock nut, 10mm
4	Hex bolt, 12mm
8	Flat washer, 12mm
4	Lock washer, 12mm
4	Hex nut, 12mm

Tools Required

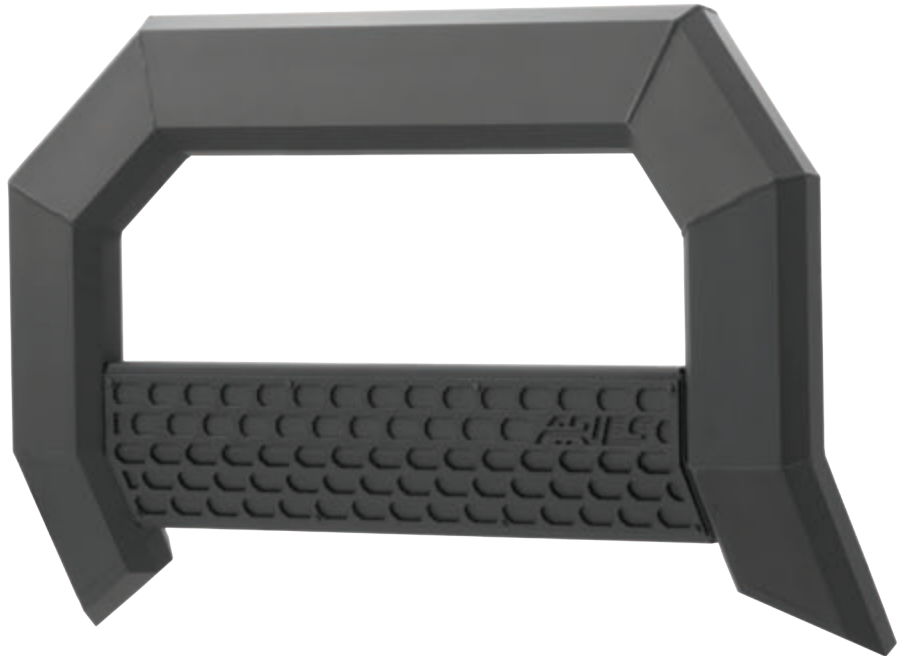
Ratchet	Socket, 13mm
Torque wrench	Socket, 18mm
Utility knife	Wrench, 16mm
Level	Wrench, 19mm
Paint pen	Tape



Level of Difficulty

Easy

Product Image



Notes and Maintenance

Before you begin installation, read all instructions thoroughly.

Proper tools will improve the quality of installation and reduce the time required.

For black finishes, mild soap may be used to clean the product.

Step 1

Carefully remove the plastic splash guard attached to the bottom of the front bumper.

Depending on the model of the truck, the splash guard will be attached using a combination of two-piece plastic push fasteners, rivets or hex bolts.

Be sure to keep all hardware for later reinstallation.



Step 2

Starting on the driver side, remove the two hex nuts from the lower factory bumper bolts.

Insert one upper frame bracket and secure it with the previously removed hex nuts.



Step 3

Attach the driver-side lower frame mounting bracket to the upper frame mounting bracket using 12mm hex bolts, flat washers, lock washers and hex nuts.



Step 4

Repeat steps 2 and 3 to install the passenger-side mounting brackets.



Step 5

To reinstall the splash guard, hold up the splash guard to the front bumper and align it with the mounting points.

Mark the locations of the mounting brackets on the splash guard, using a paint pen and tape.



Step 6

With the locations marked, cut two slots large enough to clear the mounting brackets.

After cutting the mounting bracket slots, reinstall the splash guard.

Note: If rivets were removed in step 1, reattach these locations with the provided 6mm button heads, flat washers and nylock nuts.



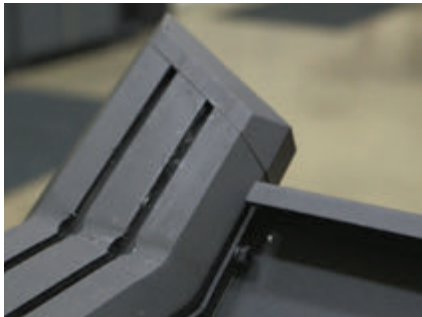
Step 7

To attach the bull bar mounting brackets, lay the bull bar on a flat surface. Insert two 8mm hex bolts into the inner rail slot.

Place the driver-side bracket over the bolts and secure the bracket to the bull bar using two 8mm flat washers and 8mm nylock nuts.

Snug the hardware, but do not fully tighten.

Repeat this step for the passenger-side bracket.



Step 8

With help, lift the bull bar into place and align the mounting tabs on the outside of the mounting brackets.



Step 9

Insert a 10mm hex bolt with flat washer on the outside of the lower mounting point of the bracket and a 10mm flat washer and nylock nut on the inside.

Snug the hardware, but do not fully tighten.



Step 10

Repeat step 9 to finish securing the bull bar mounting bracket to the lower frame mounting bracket.

Repeat this process for all mounting locations.

Level and adjust the bull bar into the desired position and tighten all hardware.



Step 11

Congratulations on the installation of your new ARIES AdvantEDGE™ bull bar.

With the bull bar installed, periodic inspections should be performed to ensure all mounting hardware remains tight.

To protect your investment, see the 'Notes and Maintenance' section on the first page of this instruction manual.

