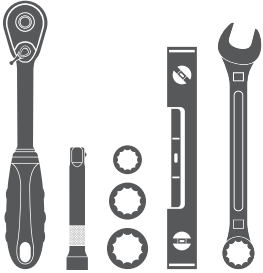


Parts List

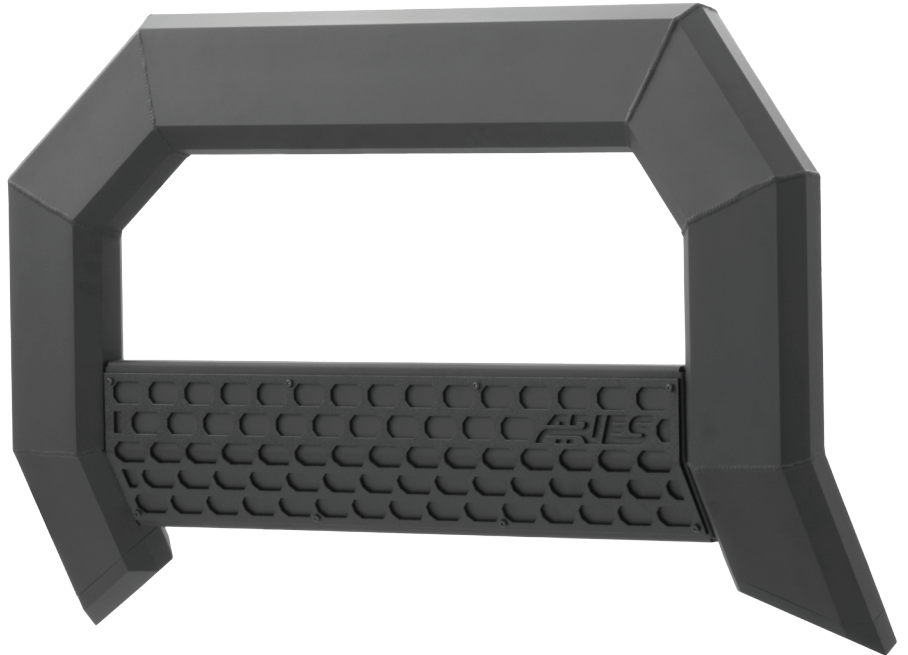
1	Bull bar
2	Driver / left mounting bracket
2	Passenger / right mounting bracket
6	Hex bolt, 8mm
6	Flat washer, 8mm
6	Nylock nut, 8mm
4	Hex bolt, 10mm
8	Flat washer, 10mm
4	Nylock nut, 10mm

Tools Required

Ratchet	Socket, 13mm
Extension	Socket, 16mm
Level	Socket, 18mm
Wrench, 17mm	

**Level of Difficulty**

Easy

Product Image**Notes and Maintenance**

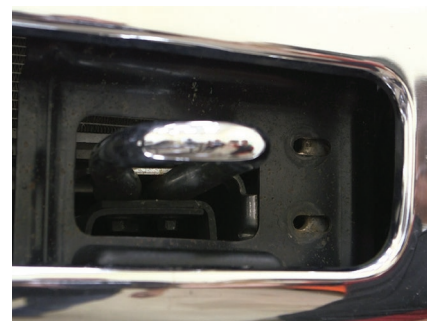
Before you begin installation, read all instructions thoroughly.

Proper tools will improve the quality of installation and reduce the time required.

For black finishes, mild soap may be used to clean the product.

Step 1

Starting on the driver side, remove the two factory hex bolts.



Step 2

Secure the driver-side mounting bracket to the vehicle using the previously removed hex bolts.

Snug the hardware, but do not fully tighten.



Step 3

Repeat steps 1 and 2 to attach the passenger-side mounting bracket.



Step 4

To attach the bull bar mounting brackets, lay the bull bar on a flat surface.

Insert three 8mm hex bolts into the inner rail slot.

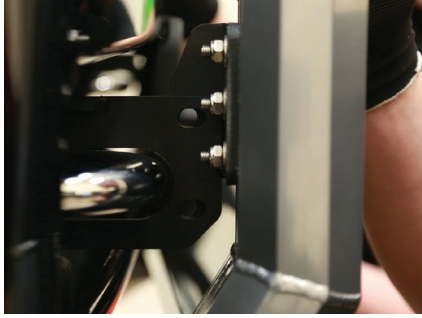
Place the driver-side bracket over the bolts and secure the bracket to the bull bar using an 8mm flat washer and 8mm nylock nut.

Snug the hardware, but do not fully tighten. Repeat this step for the passenger-side bracket.



Step 5

With help, lift the bull bar into place and align the mounting tabs on the inside of the mounting brackets.

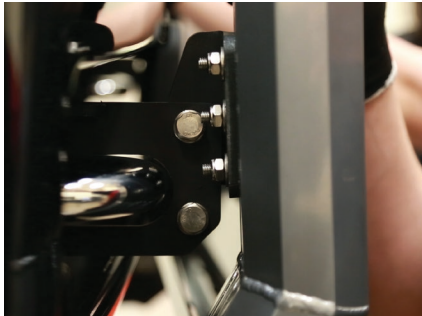


Step 6

Insert a 10mm hex bolt with flat washer on the outside of the bracket and a 10mm flat washer and nylock nut on the inside.

Snug the hardware, but do not fully tighten.

Repeat this process for all mounting locations.



Step 7

Level and adjust the bull bar into the desired position and tighten all hardware.



Step 8

Congratulations on the installation of your new ARIES AdvantEDGE™ bull bar.

With the bull bar installed, periodic inspections should be performed to ensure all mounting hardware remains tight.

To protect your investment, see the 'Notes and Maintenance' section on the first page of this instruction manual.

