

Parts List

| | |
|---|------------------------------------|
| 1 | Bull bar |
| 2 | Driver / left mounting bracket |
| 2 | Passenger / right mounting bracket |
| 6 | Hex bolt, 8mm |
| 6 | Flat washer, 8mm |
| 6 | Nylock nut, 8mm |
| 4 | Hex bolt, 10mm |
| 8 | Flat washer, 10mm |
| 4 | Nylock nut, 10mm |

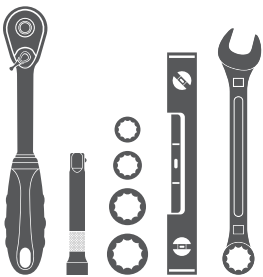
Additional Hardware*

| | |
|---|-------------------|
| 4 | Bolt plate |
| 4 | Flat washer, 12mm |
| 4 | Nylock nuts, 12mm |

* Optional for use with vehicles without tow hooks.

Tools Required

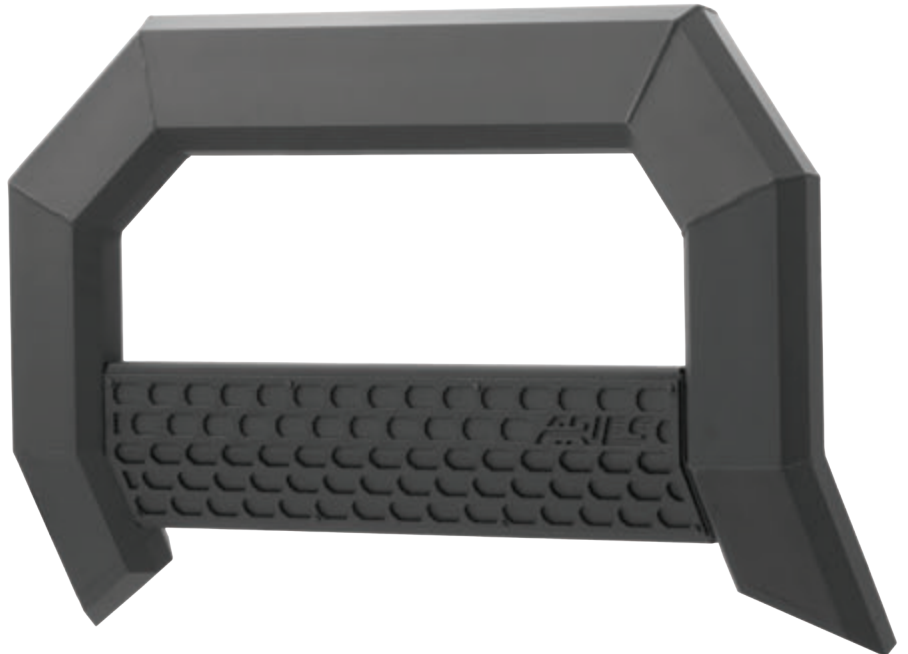
| | |
|--------------|--------------|
| Ratchet | Socket, 13mm |
| Extension | Socket, 15mm |
| Level | Socket, 16mm |
| Wrench, 17mm | Socket, 19mm |



Level of Difficulty

Easy

Product Image



Notes and Maintenance

Before you begin installation, read all instructions thoroughly.

Proper tools will improve the quality of installation and reduce the time required.

For black finishes, mild soap may be used to clean the product.

Step 1

For vehicle with factory tow hooks:

Starting on the driver side, remove the front factory hex bolt. Loosen the rear factory hex bolt and leave it in place.

Remove the tow hook.

For vehicle without factory tow hooks:

Use the provided bolt plates and 12mm hardware in place of the factory hardware.



Step 2

Insert the rear of the driver-side mounting bracket over the rear mounting hex bolt.

Secure the mounting bracket to the vehicle using the previously removed hex bolt.

Snug the hardware, but do not fully tighten.



Step 3

Repeat steps 1 and 2 to attach the passenger-side mounting bracket.



Step 4

To attach the bull bar mounting brackets, lay the bull bar on a flat surface.

Insert three 8mm hex bolts into the inner rail slot.

Place the driver-side bracket over the bolts and secure the bracket to the bull bar using an 8mm flat washer and 8mm nylock nut.

Snug the hardware, but do not fully tighten. Repeat this step for the passenger-side bracket.



Step 5

With help, lift the bull bar into place and align the mounting tabs on the outside of the mounting brackets.

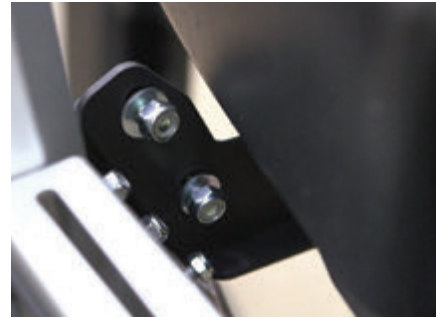


Step 6

Insert a 10mm hex bolt with flat washer on the outside of the bracket and a 10mm flat washer and nylock nut on the inside.

Snug the hardware, but do not fully tighten.

Repeat this process for all mounting locations.



Step 7

Level and adjust the bull bar into the desired position and tighten all hardware.



Step 8

Congratulations on the installation of your new ARIES AdvantEDGE™ bull bar.

With the bull bar installed, periodic inspections should be performed to ensure all mounting hardware remains tight.

To protect your investment, see the 'Notes and Maintenance' section on the first page of this instruction manual.

