

**ARB** **AIR**

**LUNGER**

**AIR OPERATED  
LOCKING DIFFERENTIALS**

**PRODUCT RELEASE**



**RD111/RD121**

**TOYOTA 8" IFS, 53mm**

# **ARB RD111/RD121**

## **TOYOTA 8" IFS,53mm BRNG**

### **Specifications:**

---

- 30 spline axle.
- 33mm [1.30"] axle shaft diameter (outside of splines).
- 10 bolt ring gear.
- 126mm [4.96"] dia. ring gear ID.
- 53mm carrier bearing ID.

### **Model Range:**

---

- Late model Toyota 8" IFS clamshell type front differentials.

**NOTE:** The RD111 & RD121 cover a carrier break determined by the ring and pinion ratio. At the time of release the exact carrier break ratios have not been determined. Please consult Air Locker application charts for updates. Refer to RD111 for 'x.xx & UP' ratio range applications. Refer to RD121 for 'x.xx & DN' ratio range applications.

#### **Known applications for RD111:**

2004 on      Toyota Landcruiser Prado, 4.10:1 ratio

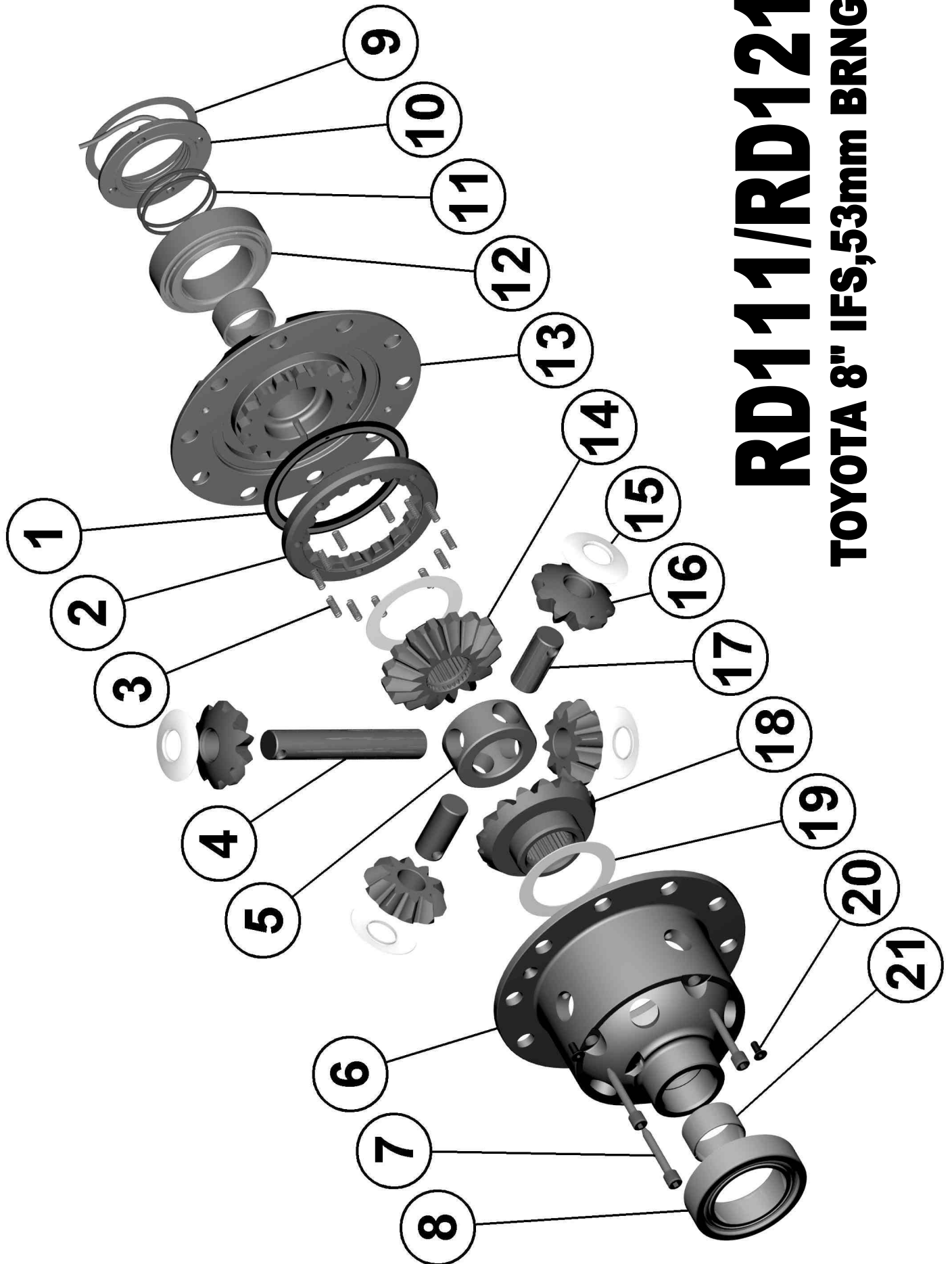
#### **Known applications for RD121:**

2005      Toyota Tacoma, 3.73:1 ratio  
            Toyota Hilux, 3.58:1 ratio

### **Features:**

---

- Patented 'timed' locking mechanism offers higher strength and ultra fast un-locking (**#2, #13 & #14**).
- Comprehensive photo illustrated installation and service guides.
- New steel reinforced, elastomer bonded annular seal designed to handle the most extreme climactic temperatures on earth (**#1**).
- New two piece differential carrier design.
- Super long life Teflon impregnated sintered bushings to reduce axle shaft wear and minimize shock transferred through CV's in off-road use (**#21**).



# RD111/RD121

TOYOTA 8" IFS, 53mm BRNG