



FITTING INSTRUCTIONS

Part Number: 4420100

Description: ARB ROCK SLIDERS TO SUIT TOYOTA FJ CRUISER

WARNING

- ◆ This product must be installed exactly as per these instructions using only the hardware supplied.
- ◆ Do not use this product for any vehicle make or model, other than those specified by ARB.
- ◆ This product or its fixing must not be modified in any way.
- ◆ The installation of this product may require the use of specialized tools and/or techniques
- ◆ It is recommended that this product is only installed by trained personnel
- ◆ These instructions are correct as at the publication date. ARB Corporation Ltd. cannot be held responsible for the impact of any changes subsequently made by the vehicle manufacturer
- ◆ During installation, it is the duty of the installer to check correct operation/clearances of all components
- ◆ Work safely at all times
- ◆ Unless otherwise instructed, tighten fasteners to specified torque

FITTING REQUIREMENTS

REQUIRED TOOLS FOR FITMENT OF PRODUCT:

Basic tool kit	
----------------	--

HAVE AVAILABLE THESE SAFETY ITEMS WHEN FITTING PRODUCT:

Protective eyewear	
Hearing protection	

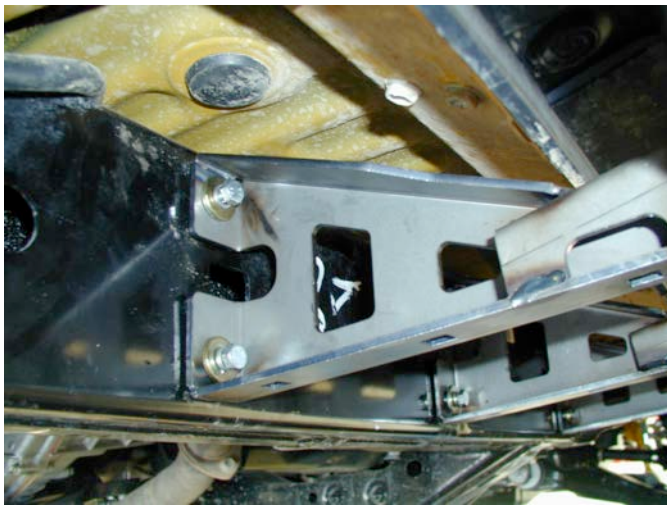


NOTE: 'WARNING' notes in the fitting procedure relate to OHS situations, where to avoid a potentially hazardous situation it is suggested that protective safety gear be worn or a safe work procedure be employed. If these notes and warnings are not heeded, injury may result.

WHERE USED	PART No	QTY	DESCRIPTION
ROCK SLIDERS TO VEHICLE CHASSIS	6562529L	1	ROCK SLIDER LEFT HAND SIDE
	6562529R	1	ROCK SLIDER RIGHT HAND SIDE
	6151022	16	BOLT M8 x 1.25 x 25mm
	4581046	16	WASHER SPRING M8
	4581063	16	WASHER FLAT 25.4 x 3mm GOLD ZINK
MISCELLANEOUS	6500002	4	RUBBER PLUG 60.3mm TUBE



1. Place the rubber plugs supplied into the ends of the rock sliders.



2. With the help of another person, carefully lift the rocker rails up to the chassis. Fix in place using the M8 x 25mm bolts, M8 spring washers and M8 x 24mm flat washers.

NOTE: Carefully position the rear bracket over the hand brake cable.



3. Repeat for the other side and tighten all bolts.

NOTE: If jacking the vehicle from the rails, do so only between the chassis brackets.

