



FITTING INSTRUCTIONS

ARB WINCH/NON WINCH BUMPER TO SUIT DODGE RAM PICKUPS
1998 TO 2002
PRODUCT No. 3952010

WARNING

FOR VEHICLES EQUIPPED WITH SRS AIRBAG
WHEN INSTALLED IN ACCORDANCE WITH THESE INSTRUCTIONS, THE FRONT
PROTECTION BAR DOES NOT AFFECT OPERATION OF THE SRS AIRBAG.

TAKE NOTE OF THE FOLLOWING:

- THIS PRODUCT MUST BE INSTALLED EXACTLY AS PER THESE INSTRUCTIONS USING ONLY THE HARDWARE SUPPLIED.
- IN THE EVENT OF DAMAGE TO ANY BULL BAR COMPONENT, CONTACT YOUR NEAREST AUTHORISED ARB STOCKIST. REPAIRS OR MODIFICATIONS TO THE IMPACT ABSORPTION SYSTEM MUST NOT BE ATTEMPTED.
- DO NOT USE THIS PRODUCT FOR ANY VEHICLE MAKE OR MODEL, OTHER THAN THOSE SPECIFIED BY ARB.
- DO NOT REMOVE LABELS FROM THIS BULL BAR.
- THIS PRODUCT OR ITS FIXING MUST NOT BE MODIFIED IN ANY WAY.

FITTING KIT No's: - 6171447, 6171449, 6171435

Note : If fitting optional fog lights, fitting kit no. 9381FCK is required.

Tools Required

10mm, 18mm, 19mm, 21mm Spanners and Sockets. Phillips head screwdriver, 10mm drill bit and drill.

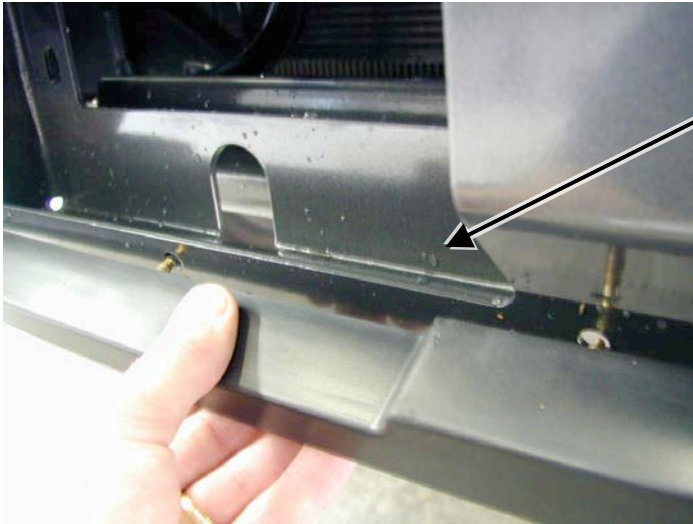
IMPORTANT

- This winch bumper is suitable only for Warn 15,000lb winch only.

USE	PART No	QTY	DESCRIPTION
BUFFER FITTMENT	6151128	19	NUT FLANGE M6
	3162173	1	BUFFER LOWER
	3162153	1	BUFFER LHS
	3162154	1	BUFFER RHS
CHROME TUBE FITTMENT	6151255	2	BOLT M12 X 40mm
	4581049	2	WASHER FLAT M12
	4581050	2	WASHER SPRING M12
	6131193	1	CHROME TUBE
MOUNT BRACKETS TO VEHICLE	3756278L	1	BRACKET BAR MOUNT LHS
	3756278R	1	BRACKET BAR MOUNT RHS
	6151232	12	BOLT M10 X 30mm
	4581048	12	WASHER M10 SPRING
	4581040	16	WASHER M10 FLAT
	3193696L	1	TOW HOOK LHS
	3193696R	1	TOW HOOK RHS
CONTROL BOX FITTMENT	3756280	1	CONTROL BOX BRACKET
	6151022	2	BOLT M8 X 25MM
	180302	8	CABLE TIE
	4581044	2	WASHER M8 FLAT
	4581046	2	WASHER M8 SPRING
WINCH	4581044	4	WASHER 3/8"
	BLB850	2	BATTERY LEAD BLACK
	BLR850	1	BATTERY LEAD RED
NUMBER PLATE FITTMENT	6151017	2	BOLT M6 X 16mm
	6151128	2	NUT FLANGE M6
	6781408	1	TAPE DOUBLE SIDED
AIR DEFLECTOR FITTMENT	6151132	7	NUT M8 FLANGE
	6151022	7	BOLT M8 X 25mm
	4581044	7	WASHER M8 FLAT
	6522010	1	AIR DEFLECTOR PANEL
WINCH COVER FITTMENT	6151128	2	NUT FLANGE M6
	6151256	2	SCREW M6 S/STEEL BUTTON HEAD
	6191001	1	WINCH COVER EXTRUSION
	6522009	1	WINCH COVER
	6151046	2	WASHER M6
BAR TO MOUNT ASSEMBLY	6151255	4	BOLT M12 X 40mm
	4581050	4	WASHER SPRING M12
	4581007	4	WASHER FLAT M12 LARGE
	4581048	4	WASHER SPRING M10
	6151026	4	NUT M10
	6151232	4	BOLT M10 X 25mm
	4581040	8	WASHER FLAT M10
LIGHT SURROUNDS TO BAR	3162166	1	LIGHT SURROUND LHS
	3162167	1	LIGHT SURROUND RHS
CB	3162152	2	PLASTIC PLUG DIA16

ASSEMBLY SEQUENCE FOR WINCH BUMPER.

1.



Position the lower buffer on the winch bumper and assemble using the M6 flange nuts. (do not over tighten)

2.



Insert the side buffers through the holes and fix using the M6 flange nuts. (Do not over tighten)

3.



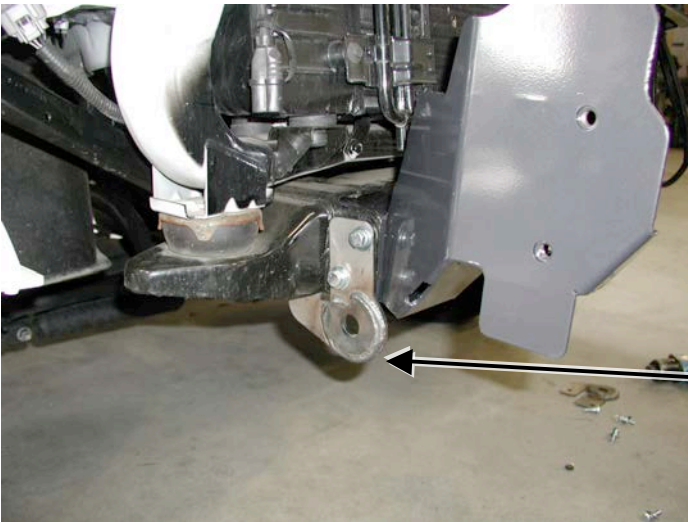
Push the top chrome tube through the hole in the buffer and fasten using the M12 x 40mm bolts, washers and spring washers.

4.



Remove the bumper from the vehicle.

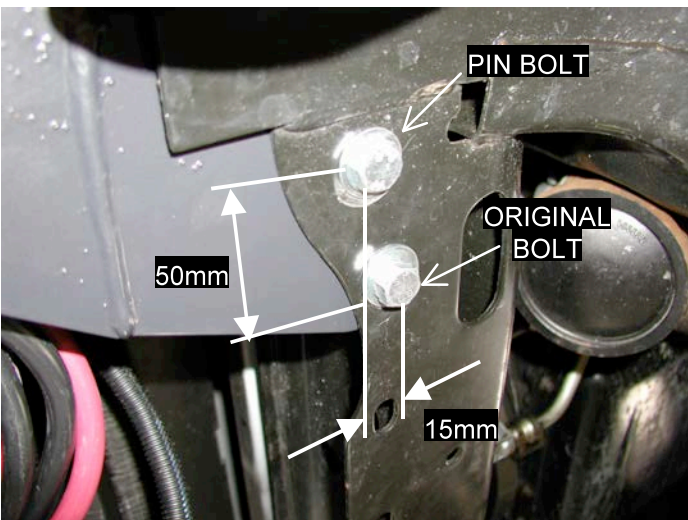
5.



Fasten the mount brackets and tow hooks to the end of the chassis rails using M10 bolts, M10 flat washers and M10 spring washers.

Tow hooks

6.

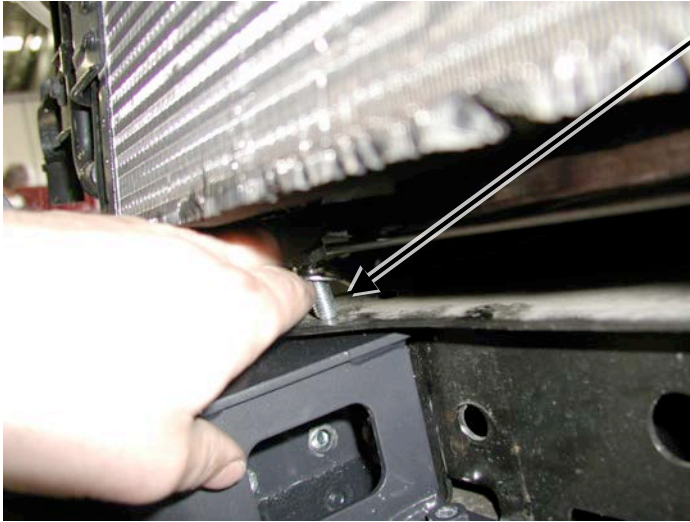


The mounts need to be pin bolted to the vehicle chassis.

Mark out the hole 50mm across to the outside and 15mm forward and drill using a 10mm drill bit. Drill all the way through the top of the bracket and cross member. Be careful not to damage the radiator above the cross member.

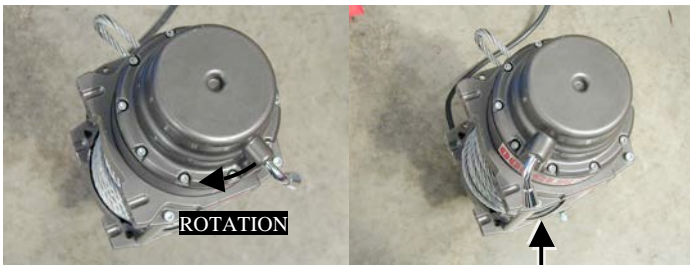
Fasten hole using M10 bolts, M10 flat washers and M10 spring washers.

7.



Fasten the top hole using M10 bolts, M10 flat washers and M10 spring washer.

8.



ORIGINAL POSITION	NEW POSITION
-------------------	--------------

If fitting winch.

The clutch handle must be repositioned so it is in a convenient location when mounted to bar.

Place the winch on its end and remove all gearbox bolts.

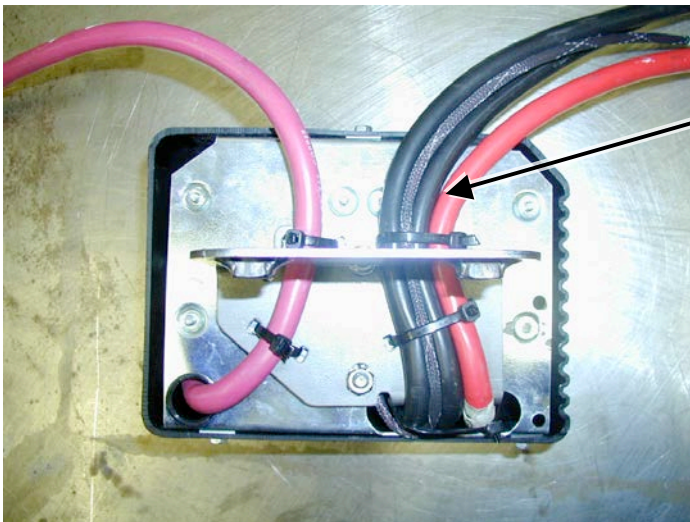
Gently raise the motor just enough to rotate it. Viewing from the gearbox end, rotate the gearbox 72deg clockwise.

Do not completely remove the motor and avoid damaging the gasket.

Refit and tighten all bolts.

NOTE: Take care not to lift the assembly more than a couple of millimeters while rotating to the desired position to avoid unmeshing the gears.

9.



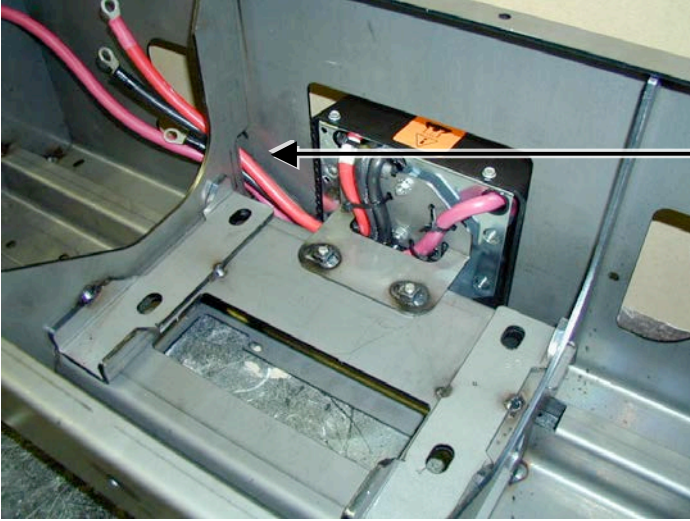
If fitting winch.

The three control box leads, which connect to winch, need to be replaced with the longer leads supplied in the fitting kit. Replace the leads with similar colours.

Bolt the control box bracket to the control box, refer photo.

Thread the cable ties through the slots in the bracket and tie down the cables to the bracket as shown in photo.

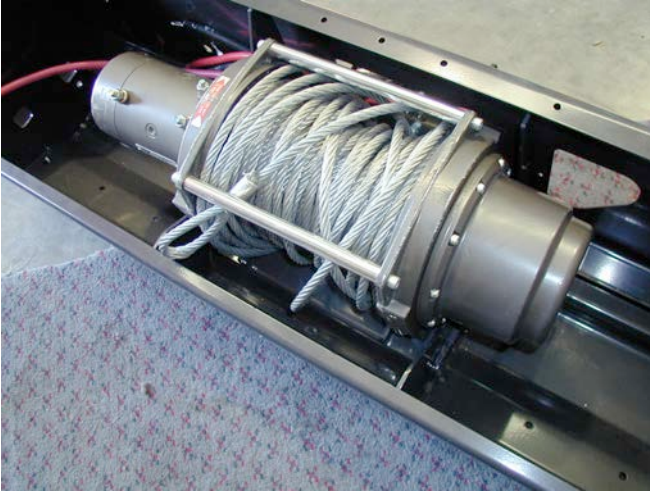
10



If fitting winch.

Mount the control box assembly to the bar and fasten to the winch mount bracket using M8 bolts, flat washers and spring washers. Run the cables through the cutout on the passenger side and cable tie through the slots on the return.

11.



If fitting winch.

Position the winch inside the bar cradle with the clutch handle positioned on the drivers side. Cable spools from the bottom. Bolt in position with the roller fair lead in place.

Connect the winch control box cables to the winch motor. Refer to the Warn handbook for additional information. Connect the long winch + & - cables to the vehicle after the bar is installed. Refer to the Warn winch manual for vehicle wiring instructions.

12.



If not fitting winch.

Wrap rubber extrusion around winch cover.

Place washers over the winch cover fixing holes located on the top middle face of the winch bumper.

Place the winch cover on top of the winch bumper inline with the mount holes.

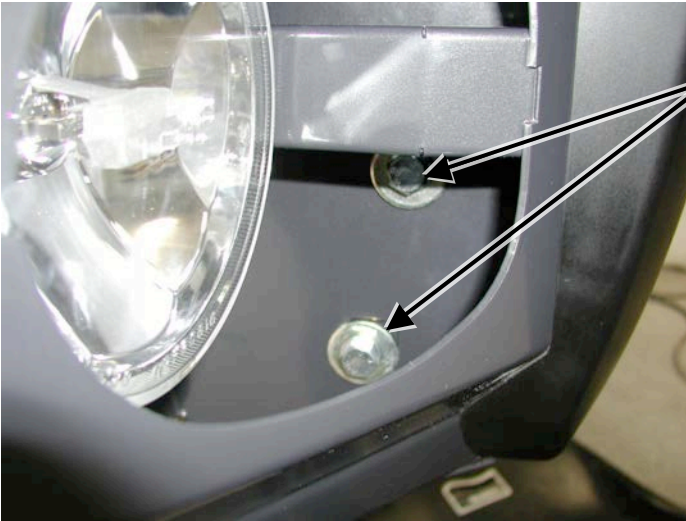
Bolt together using the M6 button head stainless steel screws and M6 nuts.

13.



Using two people, three if winch fitted, position the bar assembly on the vehicle mounts.

14.



Bolt the bar to the mounts using M12 bolts, large flat washers and spring washers. Align bar to the profile of the guards the guards and tighten all bolts.

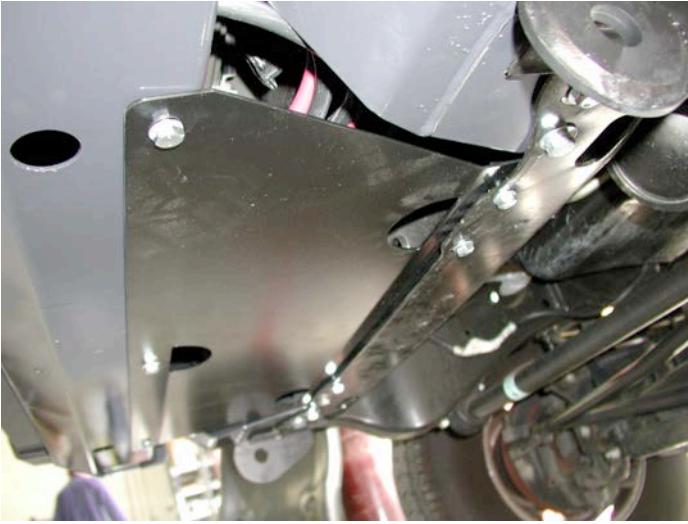
15.



The bar must be pin bolted to the mount brackets. Using a drill and 10mm drill bit, drill through the upper and lower Ø10mm holes located in the mount brackets.

Fasten the holes using M10 bolts, flat washers and spring washers.

16.



Bolt the air deflector to the underside of the bar and chassis cross member using M8 bolts, M8 flat washers and M8 spring washers.

17.



If fitting with winch.

Feed the winch cable through the roller fair lead. Mount the hook to the end of the cable.

18.



Glue the light surrounds to the bar using a silicone based rubber adhesive. Run the bead along the cavity on the rear side of the part. Position the surround to align the inside edge with the buffer and concentric to the light.

Wipe off any adhesive on the front face of the bar. Allow adhesive to cure before continuing.

19.



There are two Ø16 holes located on the top face of the bar. If no CB aerials are fitted the holes can be covered with the plastic plugs provided in the fitting kit.

Place the ARB logo on the front face of the bar in the indentation.

20. If fitting fog lights, wire the fog lights as described in the fog light fitting instructions.

The fog lights can be adjusted to desired angles by the adjustment bolts located at the back of the light insert. When adjustment is finalized, be sure to retighten the fog light bolts.

If fitting with winch.

21. Connect the long winch + & - cables to the vehicle after the bar is installed.

Refer to the Warn winch manual for vehicle wiring instructions.

Ensure that these cables are installed well clear of sharp, hot or moving objects. Secure the winch cables to the vehicle and winch bumper with the supplied cable ties.

Optional Extras suited for this bar includes a range of IPF driving lights and fog lights (Kit no. 9381FCK). Contact your nearest ARB stockiest for further information.