

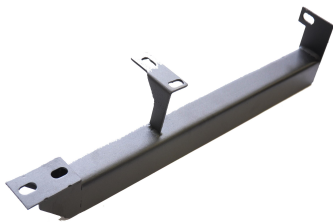


## Installation Instruction

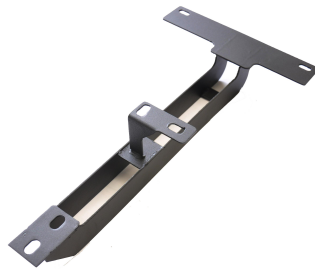
**Part#: IB25EAA9B**

**Application: For 04-09 Hyundai Tucson /04-09 Kia Sportage**

Item	Part Name	QTY	Item	Part Name	QTY
1	Drive Side Bar	1	2	Passenger Side Bar	1
3	Driver Front Mounting Bracket (LF)	1	4	Passenger Front Mounting Bracket (RF)	1
5	Driver Rear Mounting Bracket (LR)	1	6	Passenger Rear Mounting Bracket (RR)	1
7	M10x1.5-40mm"U"Bolt	2	8	10mm Lock Washer	4
9	10mm Hex Nut	4	10	10mm Flat Washer	4
11	M8x1.25-20mm Bolt Plate	2	12	8-1.25mmx25mm Hex Head Bolt	16
13	8mm Lock Washer	18	14	8mm Hex Nut	2
15	8mm Flat Washer	18	16	M6x1-25mm Hex Head Bolt	5
17	6mm Lock Washer	5	18	6mm Flat Washer	5
19	Plastic Retainer	4			



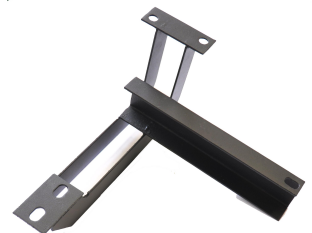
**Bracket LF**



**Bracket RF**



**Bracket LR**



**Bracket RR**

Step	Installation
1	<b><u>REMOVE CONTENTS FROM BOX.VERIFY ALL PARTS ARE PRESENT.READ INSTRUCTIONS CAREFULLY .USE ILLUSTRATION TO PORPERLY IDENTIFY BARCKETS AND SIDEBRS.</u></b>
<b>Driver Side Front Mounting Bracket Installation:</b>	
2	Remove the factory bolt on the side frame rail located on the front of the vehicle ( <b>Figure 1</b> ).
3	On the other side of the factory bolt, a plastic plug covering the factory hole on the side panel. Remove the plastic plug ( <b>Figure 1</b> ). <b>NOTE:</b> The plastic plug is covered with tar and is very hard to find it. Push along the side panel until you feel a soft spot.

The instruction here is for your reference only. We strongly recommend the professional installer for best result. We are not responsible for any damage caused by the installation. Thank you for choosing our product!

## Installation Instruction

**Part#: IB25EAA9B**

**Application: For 04-09 Hyundai Tucson /04-09 Kia Sportage**

4	Insert (1) 8mmx20mm Bolt Plate into the factory hole on the side panel. <b>(Figure 2)</b>
5	Attach Bracket (LF) to the vehicle and remove excessive insulation to level mounting area. Fasten the bracket to the inserted bolt plate with the included (2)8mm Hex Nut, (1)8mm Lock Washer, and (1) 8mm Flat Washer <b>(Figure 3 &amp; 4)</b> . <b>NOTE:</b> 04-05 Models mount in the hole towards the rear of the vehicle and 06-08 Models mount in the hole towards the front of the vehicle.
6	Attach the inside of the bracket to previously removed factory bolt mounting location. Replace the factory bolt with the included (1) 6mmx25mm Hex Head Bolt, (1)6mm Lock Washer .and (1) 6mm Flat Washer <b>(Figure 3 &amp; 5)</b>
<b>Passenger Side Front Mounting Bracket Installation:</b>	
7	Remove the two factory bolts holding the outside of the heat shield <b>(Figure 6)</b> . <b>NOTE:</b> You will be replacing these factory bolts with the included 6mm hardware.
8	Slightly pull down on the heat shield and place bracket between the heat shield and the side rail. Temporarily install the bracket without the heat shield with the included (2)6mmx25mm Hex Head Bolts, (2)6mm Lock Washers .and (2) 6mm Flat Washers. Position bracket up to the vehicle and inspect mounting area for excess rubber insulation. Remove excessive insulation as necessary to level mounting surface. Push back the heat shield until it reaches the bracket and mark the cutting location on the heat shield, <b>(Figure 7)</b> .
9	Remove bracket from vehicle and use a pair of sheet metal cutting scissors to cut out the marked location.
10	In the same direction where the front factory screw is located there is a plastic plug covering the factory hole in the side panel. Use a flat screw driver to remove the plastic plug <b>(Figure 6)</b> . <b>NOTE:</b> This plastic plug is covered with tar and is very hard to find it. Push along the side panel until you feel a soft spot.
11	Insert one of the 8mmx20mm Bolt Plates into the factory hole in the side panel. <b>(Figure 8)</b> .
12	Position Bracket up to the side rail and place heat shield over Bracket. Attach heat shield and Bracket to side rail using the hardware listed in step 6 <b>(Figure 9)</b> .
13	Attach the outside of the Bracket to already inserted Bolt Plate using the included (1)8mm Hex Nut, (1) 8mm Lock Washer .and (1) 8mm Flat Washer <b>(Figure 10)</b> . Do not tighten at this time. <b>NOTE:</b> 04-05 Models mount in the hole towards the rear of the vehicle and 06-08 Models mount in the hole towards the front of the vehicle.
<b>Rear Mounting Brackets Installation:</b>	
14	Starting on the driver side, remove the oval shape rubber plug and the round plastic plug located in the rear side of the floor panel <b>(Figure 11)</b> . Use a flat screw driver to remove the plastic plug. <b>NOTE:</b> This plastic plug is covered with tar and is very hard to find it. Push on the rear side of the oval shape hole until you feel a soft spot.

The instruction here is for your reference only. We strongly recommend the professional installer for best result. We are not responsible for any damage caused by the installation. Thank you for choosing our product!

## Installation Instruction

**Part#: IB25EAA9B**

**Application: For 04-09 Hyundai Tucson /04-09 Kia Sportage**

15	Remove a factory bolt located in the side panel by the front of the oval shape hole. <b>NOTE:</b> You will be replacing this bolt with the included 6mm bolt. Remove edge from plastic tray as shown to clear sidebar bracket.( <b>Figure 12</b> )
16	Insert one of the included "U" Bolts through oval shape hole and round hole ( <b>Figure 13</b> ).Partially hang rear Mounting Bracket to already inserted "U" Bolt using the included (2) 10mm Hex Nuts,(2) 10mmLock Washers, and (2) 10mm Flat Washers( <b>Figure 14</b> ).Position Bracket up to the vehicle and inspect mounting area for excess rubber insulation. Remove excessive insulation as necessary to level mounting surface.
17	Attach the front end of the Mounting Bracket to threaded hole in the side panel using the included (1) 6mmx25mm Hex Bolts,(1)6mmLock Washer ,and (1) 6mm Flat Washer( <b>Figure 15</b> ).
18	Position driver sidebar onto Mounting Brackets and attach it using the included (4)8mmx25mmHexHead Bolts, (4) 8mmLock Washers, and (4) 8mm Flat Washers ( <b>Figure 16</b> ).
19	Level and adjust the Side bar properly, and then tighten all hardware at this time.
20	Repeat steps 13-18 for passenger Side bar installation.
21	Do periodic inspections of the installation to make sure that all hardware is secure and tight.

**To protect your investment,** wax this product after installing, Regular waxing is recommended to add a protective layer over the finish. Do not use any type of polish or wax that may contain abrasives that could damage the finish.

**For stainless steel:** Aluminum polish may be used to polish small scratches and scuffs on the finish. Mild soap may be used to clean the sidebar.

**For gloss black finishes:** Mild soap may be used to clean the sidebar.

The instruction here is for your reference only. We strongly recommend the professional installer for best result. We are not responsible for any damage caused by the installation. Thank you for choosing our product!

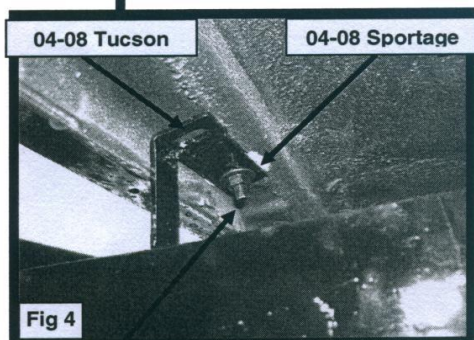
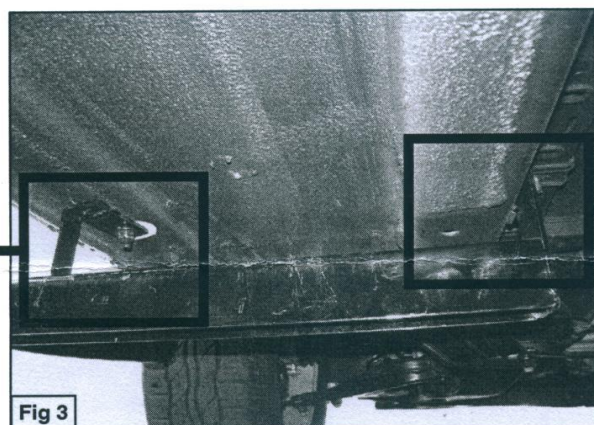
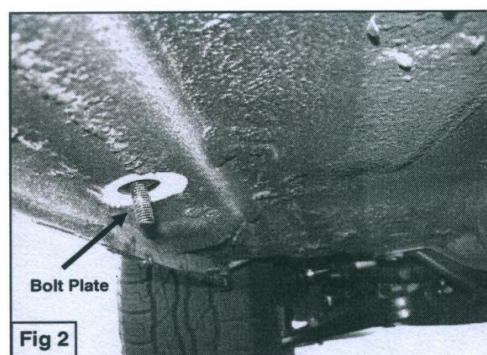
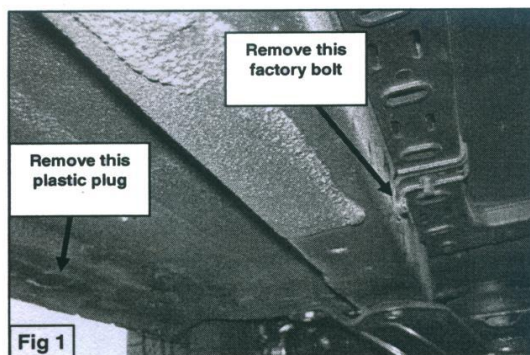
## Installation Instruction

Part#: IB25EAA9B

Application: For 04-09 Hyundai Tucson /04-09 Kia Sportage

### ***Driver Side Front Mounting Bracket Installation Shown***

**NOTE:** The tube in installation instruction is different from the one in reality. But the brackets and the installation method are same.



(Bolt Plate)  
8mm Hex Nut  
8mm Lock Washer  
8mm Flat Washer



6mm x 25mm Hex Bolt  
6mm Lock Washer  
6mm Flat Washer

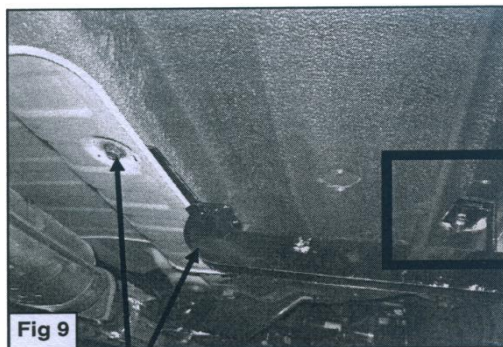
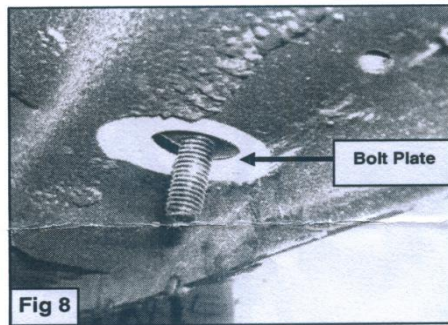
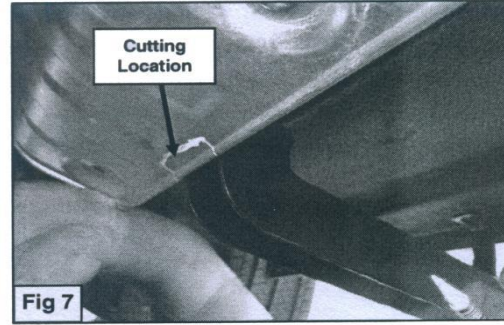
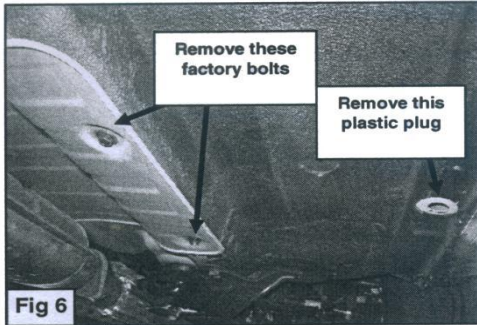
The instruction here is for your reference only. We strongly recommend the professional installer for best result. We are not responsible for any damage caused by the installation. Thank you for choosing our product!

# Installation Instruction

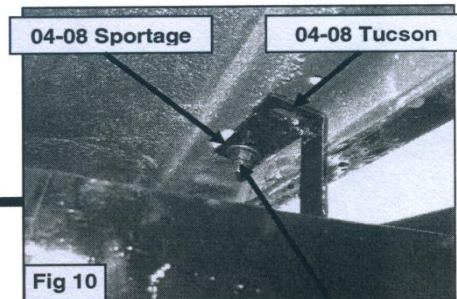
Part#: IB25EAA9B

Application: For 04-09 Hyundai Tucson /04-09 Kia Sportage

## *Passenger Side Front Mounting Bracket Installation Shown*



6mm x 25mm Hex Bolts  
6mm Lock Washers  
6mm Flat Washers



(Bolt Plate)  
8mm Hex Nut  
8mm Lock Washer  
8mm Flat Washer

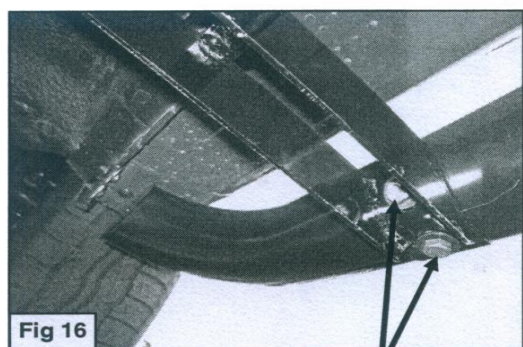
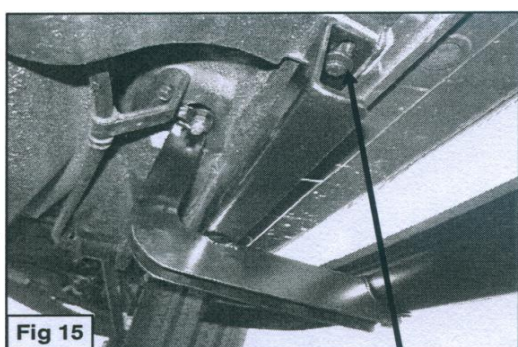
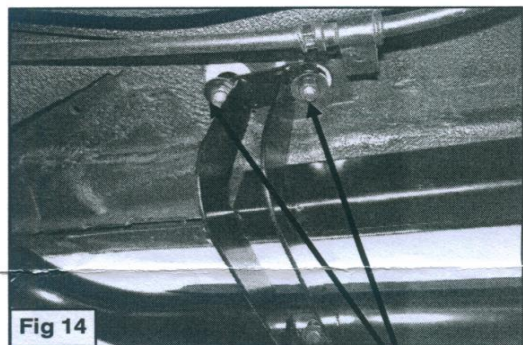
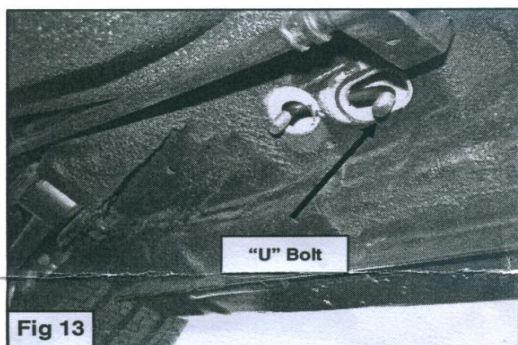
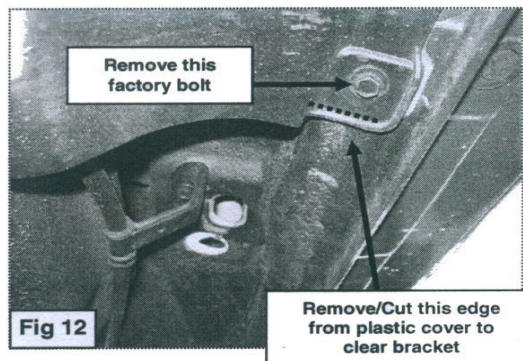
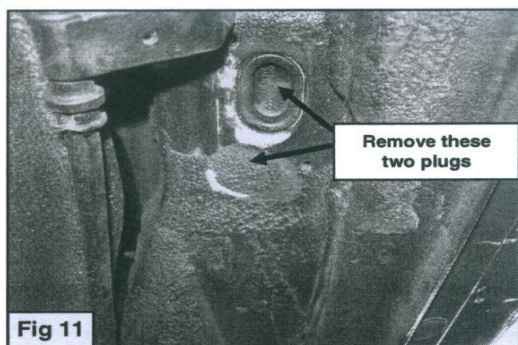
The instruction here is for your reference only. We strongly recommend the professional installer for best result. We are not responsible for any damage caused by the installation. Thank you for choosing our product!

## Installation Instruction

Part#: IB25EAA9B

Application: For 04-09 Hyundai Tucson /04-09 Kia Sportage

### *Driver Side Rear Mounting Bracket Installation Shown*



The instruction here is for your reference only. We strongly recommend the professional installer for best result. We are not responsible for any damage caused by the installation. Thank you for choosing our product!